

ATP5L Antibody

Rabbit Polyclonal

Antigen Affinity Purified

Protein ID O75964.3

Catalog No. A305-486A-T

GeneID 10632

Lot No. A305-486A-T-1

APPLICATIONS	WB
SPECIES REACTIVITY	Human
PRESUMED REACTIVITY	Based on 100% sequence identity, this antibody is predicted to react with Bovine and Orangutan
AMOUNT	10 µl
CONCENTRATION	1000 µg/ml
STORAGE/SHELF LIFE	2 – 8°C / 1 year from date of receipt
PHYSICAL STATE	Liquid
BUFFER	Tris-citrate/phosphate buffer, pH 7 to 8 containing 0.09% Sodium Azide
ISOTYPE	IgG
ORIGIN	USA
PRODUCTION PROCEDURES	Antibody was affinity purified using an epitope specific to ATP5L immobilized on solid support.

The epitope recognized by A305-486A-T maps to a region between residue 53 to 103 of human ATP synthase subunit g, mitochondrial using the numbering given in entry O75964.3 (GeneID 10632).

APPLICATIONS Centrifuge tube to remove product from lid. Optimal working dilutions should be determined experimentally by the investigator. Prepare working dilution immediately before use.

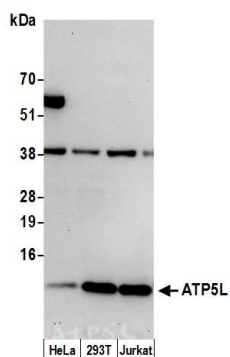
Western Blot 1:2,000 – 1:10,000

Immunoprecipitation Not recommended

ADDITIONAL INFO <https://www.bethyl.com/product/A305-486A-T>

Use the link above to view SDS, a current list of citations, and other product specific information.

This document certifies that this product has met all of the quality control standards defined by Bethyl Laboratories, Inc.
Michael Spencer, PhD Date: June 6, 2022



Detection of human ATP5L by western blot. *Samples:* Whole cell lysate (15 μ g) from HeLa, HEK293T, and Jurkat cells prepared using NETN lysis buffer. *Antibody:* Affinity purified rabbit anti-ATP5L antibody A305-486A (lot A305-486A-1) used for WB at 0.1 μ g/ml. *Detection:* Chemiluminescence with an exposure time of 30 seconds.