

IP6K1 Antibody

Rabbit Polyclonal

Antigen Affinity Purified

Protein ID Q92551.3

Catalog No. A305-628A-T

GeneID 9807

Lot No. A305-628A-T-1

APPLICATIONS	WB, IP
SPECIES REACTIVITY	Human
AMOUNT	10 µl
CONCENTRATION	1000 µg/ml
STORAGE/SHELF LIFE	2 – 8°C / 1 year from date of receipt
PHYSICAL STATE	Liquid
BUFFER	Tris-citrate/phosphate buffer, pH 7 to 8 containing 0.09% Sodium Azide
ISOTYPE	IgG
ORIGIN	USA
PRODUCTION PROCEDURES	Antibody was affinity purified using an epitope specific to IP6K1 immobilized on solid support.

The epitope recognized by A305-628A-T maps to a region between residue 75 to 125 of human Inositol hexakisphosphate kinase 1 using the numbering given in entry Q92551.3 (GeneID 9807).

Antibody concentration was determined by extinction coefficient: absorbance at 280 nm of 1.4 equals 1.0 mg of IgG.

APPLICATIONS Centrifuge tube to remove product from lid. Optimal working dilutions should be determined experimentally by the investigator. Prepare working dilution immediately before use.

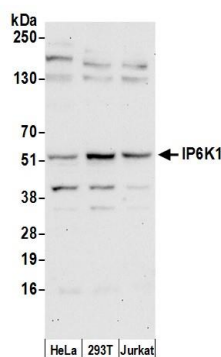
Western Blot 1:2,000 – 1:10,000

Immunoprecipitation 8 – 15 µl/mg lysate

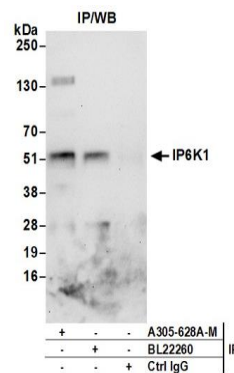
ADDITIONAL INFO <https://www.bethyl.com/product/A305-628A-T>

Use the link above to view SDS, a current list of citations, and other product specific information. IP-western blot protocol: https://www.bethyl.com/content/protocol_IP_WB

This document certifies that this product has met all of the quality control standards defined by Bethyl Laboratories, Inc.
Michael Spencer, PhD Date: June 6, 2022



Detection of human IP6K1 by western blot. *Samples:* Whole cell lysate (50 μ g) from HeLa, HEK293T, and Jurkat cells prepared using NETN lysis buffer. *Antibody:* Affinity purified rabbit anti-IP6K1 antibody A305-628A-T (lot A305-628A-T-1) used for WB at 1:1000. *Detection:* Chemiluminescence with an exposure time of 30 seconds.



Detection of human IP6K1 by western blot of immunoprecipitates. *Samples:* Whole cell lysate (0.5 or 1.0 mg per IP reaction; 20% of IP loaded) from Jurkat cells prepared using NETN lysis buffer. *Antibodies:* Affinity purified rabbit anti-IP6K1 antibody A305-628A-T (lot A305-628A-T-1) used for IP at 8 μ l per reaction. IP6K1 was also immunoprecipitated by rabbit anti-IP6K1 antibody BL22260. For blotting immunoprecipitated IP6K1, A305-628A-T was used at 1:400. *Detection:* Chemiluminescence with an exposure time of 30 seconds.