

LPCAT4 Antibody

Rabbit Polyclonal

Antigen Affinity Purified Protein ID Q643R3.1

Catalog No. A305-778A-T GenelD 254531

Lot No. A305-778A-T-1

APPLICATIONS	IP
SPECIES REACTIVITY	Human
PRESUMED REACTIVITY	Based on 100% sequence identity, this antibody is predicted to react with Mouse
AMOUNT	10 µl
CONCENTRATION	1000 µg/ml
STORAGE/SHELF LIFE	2 – 8°C / 1 year from date of receipt
PHYSICAL STATE	Liquid
BUFFER	Tris-citrate/phosphate buffer, pH 7 to 8 containing 0.09% Sodium Azide
ISOTYPE	IgG
ORIGIN	USA
PRODUCTION PROCEDURES	Antibody was affinity purified using an epitope specific to LPCAT4 immobilized on solid support.

The epitope recognized by A305-778A-T maps to a region between residue 474 and 524 of human Lysophospholipid acyltransferase LPCAT4 using the numbering given in entry Q643R3.1 (GeneID 254531).

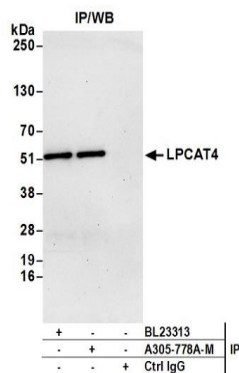
Antibody concentration was determined by extinction coefficient: absorbance at 280 nm of 1.4 equals 1.0 mg of IgG.

APPLICATIONS Centrifuge tube to remove product from lid. Optimal working dilutions should be determined experimentally by the investigator. Prepare working dilution immediately before use.

Immunoprecipitation 8 – 15 µl/mg lysate

ADDITIONAL INFO <https://www.bethyl.com/product/A305-778A-T>
Use the link above to view SDS, a current list of citations, and other product specific information.
IP-western blot protocol: https://www.bethyl.com/content/protocol_IP_WB

This document certifies that this product has met all of the quality control standards defined by Bethyl Laboratories, Inc.
Michael Spencer, PhD Date: June 6, 2022



Detection of human LPCAT4 by western blot of immunoprecipitates. *Samples:* Whole cell lysate (1.0 mg per IP reaction; 20% of IP loaded) from HeLa cells prepared using NETN lysis buffer. *Antibodies:* Affinity purified rabbit anti-LPCAT4 antibody A305-778A-T (lot A305-778A-T-1) used for IP at 8 μ l per reaction. LPCAT4 was also immunoprecipitated by rabbit anti-LPCAT4 antibody BL23313. For blotting immunoprecipitated LPCAT4, A305-778A-T was used at 1:400. *Detection:* Chemiluminescence with an exposure time of 3 minutes.