

# METTL14 Antibody

Rabbit Polyclonal

Antigen Affinity Purified

Protein ID Q9HCE5.2

Catalog No. A305-848A-M

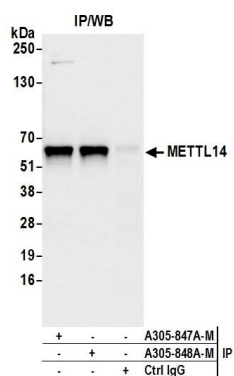
GeneID 57721

Lot No. A305-848A-M-1



|                              |  |
|------------------------------|--|
| <b>APPLICATIONS</b>          | IP   |
| <b>SPECIES REACTIVITY</b>    | Human  |
| <b>PRESUMED REACTIVITY</b>   | Based on 100% sequence identity, this antibody is predicted to react with Orangutan  |
| <b>AMOUNT</b>                | 100 µl   |
| <b>CONCENTRATION</b>         | 400 µg/ml  |
| <b>STORAGE/SHELF LIFE</b>    | 2 - 8° C / 1 year from date of receipt   |
| <b>PHYSICAL STATE</b>        | Liquid   |
| <b>BUFFER</b>                | Tris-buffered Saline containing 0.1% BSA and 0.09% Sodium Azide  |
| <b>ISOTYPE</b>               | IgG  |
| <b>ORIGIN</b>                | USA  |
| <b>PRODUCTION PROCEDURES</b> | <p>Antibody was affinity purified using an epitope specific to METTL14 immobilized on solid support.</p> <p>The epitope recognized by A305-848A-M maps to a region between residue 75 and 125 of human Methyltransferase-like protein 14 using the numbering given in entry Q9HCE5.2 (GeneID 57721).</p> <p>Antibody concentration was determined by extinction coefficient: absorbance at 280 nm of 1.4 equals 1.0 mg of IgG.</p> |
| <b>APPLICATIONS</b>          | <p>Centrifuge tube to remove product from lid. Optimal working dilutions should be determined experimentally by the investigator. Prepare working dilution immediately before use.</p> <p>Immunoprecipitation      15-20 µl/mg lysate</p>  |
| <b>APPLICATION NOTES</b>     | Western blot of immunoprecipitates performed using Normal Pig Serum (Cat. No. S100-020), Goat anti-Rabbit Light Chain HRP Conjugate (Cat. No. A120-113P) and 4-20% SDS-PAGE (link to IP-western blot protocol in Additional Info section below).   |
| <b>ADDITIONAL INFO</b>       | <p><a href="https://www.bethyl.com/product/A305-848A-M">https://www.bethyl.com/product/A305-848A-M</a></p> <p>Use the link above to view SDS, a current list of citations, and other product specific information. IP-western blot protocol: <a href="https://www.bethyl.com/content/protocol_IP_WB">https://www.bethyl.com/content/protocol_IP_WB</a></p>   |

This document certifies that this product has met all of the quality control standards defined by Bethyl Laboratories, Inc.  
Eric McIntush, PhD | Chief Scientific Officer Date: June 21, 2019



**Detection of human METTL14 by western blot of immunoprecipitates.** *Samples:* Whole cell lysate (1.0 mg per IP reaction; 20% of IP loaded) from Jurkat cells prepared using NETN lysis buffer. *Antibodies:* Affinity purified rabbit anti-METTL14 antibody A305-848A-M (lot A305-848A-M-1) used for IP at 15  $\mu$ l per reaction. METTL14 was also immunoprecipitated by rabbit anti-METTL14 antibody A305-847A-M. For blotting immunoprecipitated METTL14, A305-847A-M was used at 1:1000. *Detection:* Chemiluminescence with an exposure time of 3 seconds.