

# Goat IgG Heavy and Light Chain Antibody

Rabbit Polyclonal Conjugate DyLight® 650

Antigen Affinity Purified

Catalog No. A50-100D5

Lot No. 6

<b>APPLICATIONS</b>	IHC, ICC, Flow Cyt, IF
<b>SPECIES REACTIVITY</b>	Goat
<b>AMOUNT</b>	1 ml
<b>CONCENTRATION</b>	0.5 mg/ml
<b>STORAGE/SHELF LIFE</b>	2 – 8°C / 1 year from date of receipt
<b>PHYSICAL STATE</b>	Liquid
<b>BUFFER</b>	Phosphate Buffered Saline (PBS) containing 0.09% Sodium Azide
<b>FLUOROPHORE/PROTEIN</b>	5.2
<b>ISOTYPE</b>	IgG
<b>ORIGIN</b>	USA

**PRODUCTION PROCEDURES** The antibody was isolated by affinity chromatography using antigen coupled to agarose beads and conjugated to DyLight® 650.

Prior to conjugation, immunoglobulin concentration was determined using Beer's Law where 1 mg/mL IgG has an A280 of 1.4.

By immunoelectrophoresis and ELISA this antibody reacts specifically with goat IgG and with light chains common to other goat immunoglobulins. No antibody was detected against non-immunoglobulin serum proteins.

This antibody may cross react with IgG from other species.

**APPLICATIONS** Centrifuge tube to remove product from lid. Optimal working dilutions should be determined experimentally by the investigator. Prepare working dilution immediately before use.

Immunohistochemistry	1:50 – 1:500
Immunocytochemistry	1:50 – 1:500
Flow Cytometry	1:50 – 1:200
Immunofluorescence	1:50 – 1:500

**APPLICATION NOTES** Not all listed applications have been specifically tested by our laboratory.

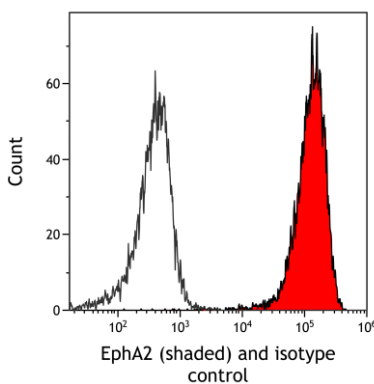
DyLight® 650 is excited at 652 (in PBS) and emits at 672 (in PBS). DyLight® 650 replaces DyLight® 649.

**ADDITIONAL INFO** DyLight® is a trademark of Thermo Fisher Scientific Inc. and its subsidiaries.

<https://www.fortislife.com/p/A50-100D5>

Use the link above to view SDS, a current list of citations, and other product specific information.

This document certifies that this product has met all of the quality control standards defined by Bethyl Laboratories, Inc.  
Michael Spencer, PhD Date: January 19, 2024



**Detection of human EphA2 (shaded) in OVCAR8 cells by flow cytometry.** *Antibody:* Goat anti-EphA2 antibody or isotype control (unshaded). *Secondary:* DyLight® 650-conjugated rabbit anti-goat IgG (A50-100D5).