

# Goat IgG Heavy and Light Chain Antibody

Donkey Polyclonal Conjugate HRP

Antigen Affinity Purified

Catalog No. A50-101P

Lot No. A50-101P-32

**APPLICATIONS** WB, IHC, ICC, ELISA

**SPECIES REACTIVITY** Goat

**AMOUNT** 1 ml

**CONCENTRATION** 1 mg/ml

**STORAGE/SHELF LIFE** 2 – 8°C / 1 year from date of receipt

**PHYSICAL STATE** Liquid

**BUFFER** Phosphate Buffered Saline (PBS) containing 0.05% Pro-Clean 400

**ISOTYPE** IgG

**ORIGIN** USA

**PRODUCTION PROCEDURES** The antibody was isolated by affinity chromatography using antigen coupled to agarose beads and conjugated to horseradish peroxidase (HRP).

Antibody concentration was determined by extinction coefficient prior to conjugation: absorbance at 280 nm of 1.4 equals 1.0 mg of IgG. Molar enzyme/antibody protein ratio is 4:1.

By immunoelectrophoresis and ELISA this antibody reacts specifically with goat IgG and with light chains common to other goat immunoglobulins. No antibody was detected against non-immunoglobulin serum proteins.

This antibody may cross react with IgG from other species.

**APPLICATIONS** Centrifuge tube to remove product from lid. Optimal working dilutions should be determined experimentally by the investigator. Prepare working dilution immediately before use.

Western Blot 1:5,000 – 1:50,000

Immunohistochemistry 1:50 – 1:500

Immunocytochemistry 1:50 – 1:1,000

ELISA 1:10,000 – 1:100,000

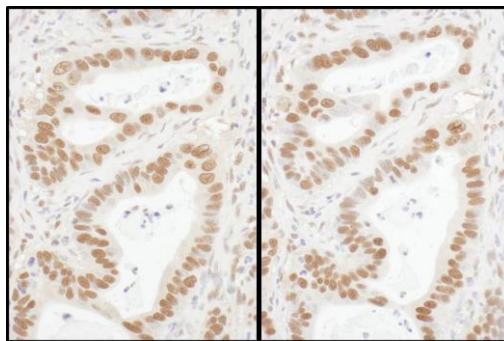
**APPLICATION NOTES** Not all listed applications have been specifically tested by our laboratory.

IHC validation was performed using Immunohistochemistry Accessory Kit (Cat. # IHC-101).

**ADDITIONAL INFO** <https://www.bethyl.com/product/A50-101P>

Use the link above to view SDS, a current list of citations, and other product specific information.

This document certifies that this product has met all of the quality control standards defined by Bethyl Laboratories, Inc.  
Michael Spencer, PhD Date: February 15, 2022



A50-101P Lot 23      A50-101P Lot 23

**Detection of human Sp1 by immunohistochemistry.**

*Sample:* FFPE section of human stomach carcinoma.

*Antibody:* Affinity purified rabbit anti-Sp1 (Cat. No. A303-944A Lot1) used at a dilution of 1:5,000 (0.2µg/ml).

*Secondary Antibody:* donkey anti-goat IgG-heavy and light chain Antibody HRP Conjugated A50-101P Lot 23 (left) and A50-101P Lot 24 (right) used at a dilution of 1:200 (5 µg/ml). *Detection:* DAB