

Goat IgG-heavy and light chain cross-adsorbed Antibody

Rabbit Polyclonal
Antigen Affinity Purified
Catalog No. A50-200D4
Lot No. A50-200D4-8

Conjugate DyLight® 594



APPLICATIONS	IHC, ICC, F, IF
SPECIES REACTIVITY	Goat. Minimum reactivity to chicken, horse, human, mouse, pig and rat
AMOUNT	1 ml
CONCENTRATION	0.5 mg/ml
STORAGE/SHELF LIFE	2 - 8° C / 1 year from date of receipt
PHYSICAL STATE	Liquid
BUFFER	Phosphate Buffered Saline (PBS) containing 0.09% Sodium Azide
FLUOROPHORE/PROTEIN	5.8
ISOTYPE	IgG
ORIGIN	USA
PRODUCTION PROCEDURES	Antiserum was cross adsorbed using chicken, horse, human, mouse, pig and rat immunosorbents to remove cross reactive antibodies. The antibody to goat IgG was isolated by affinity chromatography using antigen coupled to agarose beads and conjugated to DyLight® 594.

Antibody concentration was determined by extinction coefficient: absorbance at 280 nm of 1.4 equals 1.0 mg of IgG.

By immunoelectrophoresis and ELISA this antibody reacts specifically with goat IgG and with light chains common to other goat immunoglobulins. No antibody was detected against non-immunoglobulin serum proteins. Less than 0.1% cross reactivity to chicken, horse, human, mouse, pig and rat IgG was detected.

This antibody may cross react with IgG from other species.

APPLICATIONS Centrifuge tube to remove product from lid. Optimal working dilutions should be determined experimentally by the investigator. Prepare working dilution immediately before use.

Immunohistochemistry	1:50 - 1:500
Immunocytochemistry	1:50 - 1:500
Flow Cytometry	1:50 - 1:200
Immunofluorescence	1:50 - 1:500

APPLICATION NOTES Not all listed applications have been specifically tested by our laboratory.

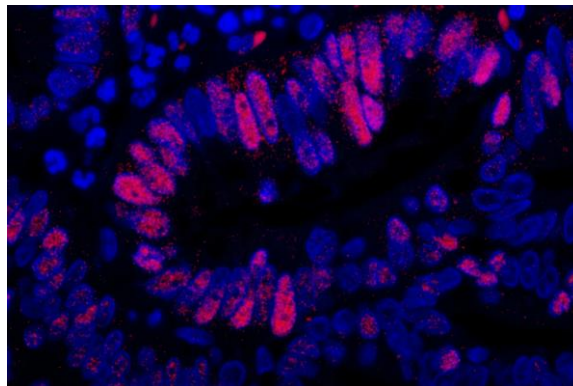
DyLight® 594 is excited at 593 (in PBS) and emits at 618 (in PBS).

DyLight® is a trademark of Thermo Fisher Scientific Inc. and its subsidiaries.

ADDITIONAL INFO <https://www.bethyl.com/product/A50-200D4>

Use the link above to view SDS, a current list of citations, and other product specific information.

This document certifies that this product has met all of the quality control standards defined by Bethyl Laboratories, Inc.
Brian McWilliams, PhD Date: July 27, 2021

**Detection of human MCM3 by immunofluorescence.**

Sample: FFPE section of human stomach carcinoma.

Primary Antibody: Affinity purified goat anti-MCM3 (Cat. No. IHC-00037 Lot1) used at a dilution of 1:100.

Secondary Antibody: Red-fluorescent Rabbit anti-goat IgG-heavy and light chain cross-adsorbed Antibody DyLight® 594 Conjugated (A50-200D4 Lot3) used at a dilution of 1:100 (5µg/ml). *Counterstain:* DAPI (blue)