

# Goat IgG-heavy and light chain cross-adsorbed Antibody

Rabbit Polyclonal  
Antigen Affinity Purified  
Catalog No. A50-200D6  
Lot No. A50-200D6-7

Conjugate DyLight® 680



**APPLICATIONS** WB, IHC, ICC, F, IF  
**SPECIES REACTIVITY** Goat. Minimum reactivity to chicken, horse, human, mouse, pig and rat  
**AMOUNT** 1 ml  
**CONCENTRATION** 0.5 mg/ml  
**STORAGE/SHELF LIFE** 2 – 8° C / 1 year from date of receipt  
**PHYSICAL STATE** Liquid  
**BUFFER** Phosphate Buffered Saline (PBS) containing 0.09% Sodium Azide  
**FLUOROPHORE/PROTEIN** 3.6  
**ISOTYPE** IgG  
**ORIGIN** USA  
**PRODUCTION PROCEDURES** Antiserum was cross adsorbed using chicken, horse, human, mouse, pig and rat immunosorbents to remove cross reactive antibodies. The antibody to goat IgG was isolated by affinity chromatography using antigen coupled to agarose beads and conjugated to DyLight® 680.

Antibody concentration was determined by extinction coefficient: absorbance at 280 nm of 1.4 equals 1.0 mg of IgG.

By immunoelectrophoresis and ELISA this antibody reacts specifically with goat IgG and with light chains common to other goat immunoglobulins. No antibody was detected against non-immunoglobulin serum proteins. Less than 0.1% cross reactivity to chicken, horse, human, mouse, pig and rat IgG was detected.

This antibody may cross react with IgG from other species.

**APPLICATIONS** Centrifuge tube to remove product from lid. Optimal working dilutions should be determined experimentally by the investigator. Prepare working dilution immediately before use.

Western Blot 1:1,000 – 1:20,000. 5% non-fat dry milk in PBST or TBST is recommended for blocking and incubation of antibodies. BSA is not recommended.

Immunohistochemistry 1:50 – 1:500

Immunocytochemistry 1:50 – 1:500

Flow Cytometry 1:50 – 1:200

Immunofluorescence 1:50 – 1:500

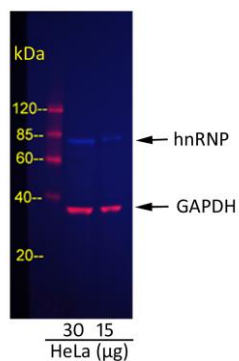
**APPLICATION NOTES** Not all listed applications have been specifically tested by our laboratory.

DyLight® 680 is excited at 682 (in PBS) and emits at 715 (in PBS).

DyLight® is a trademark of Thermo Fisher Scientific Inc. and its subsidiaries.

**ADDITIONAL INFO** <https://www.bethyl.com/product/A50-200D6>

Use the link above to view SDS, a current list of citations, and other product specific information.



**Detection of GAPDH and hnRNP in HeLa Whole Cell Lysate.** *Primary Antibodies:* cocktail of goat anti-GAPDH A303-878A (A303-878A-1) and mouse anti-hnRNP A500-011A (A500-011A-1) at 1 µg/ml each. *Secondary Antibodies:* cocktail of Dylight® 680-conjugated rabbit anti-goat A50-200D6 (A50-200D6-1) (red) and Dylight® 488-conjugated rabbit anti-mouse A90-317D2 (A90-317D2-3) (blue) at 0.5 µg/ml each. *Acquisition:* Syngene G:Box, 39 seconds (red) and 60 seconds (blue).