

Goat IgG-heavy and light chain cross-adsorbed Antibody

F(ab')₂ Donkey Polyclonal Conjugate DyLight® 594
Antigen Affinity Purified
Catalog No. A50-207D4
Lot No. A50-207D4-4



APPLICATIONS	IHC, ICC, F, IF
SPECIES REACTIVITY	Goat. Minimum reactivity to chicken, human, mouse, rabbit and rat
ISOTYPE	IgG
AMOUNT	1 ml at 0.5 mg/ml
STORAGE/SHELF LIFE	2 - 8° C / 1 year from date of receipt
PHYSICAL STATE	Liquid
FLUOROPHORE/PROTEIN	5.6
BUFFER	Phosphate Buffered Saline (PBS) containing 0.09% Sodium Azide
ORIGIN	USA
PRODUCTION PROCEDURES	Antiserum was cross adsorbed using chicken, human, mouse, rabbit and rat immunosorbents to remove cross reactive antibodies. The antibody to goat IgG was isolated by affinity chromatography using antigen coupled to agarose beads. F(ab') ₂ fragments were generated using a pepsin digestion. Fc fragments and whole IgG molecules have been removed. Fragments were conjugated to DyLight® 594.

Antibody concentration was determined by extinction coefficient: absorbance at 280 nm of 1.4 equals 1.0 mg of IgG.

By immunoelectrophoresis and ELISA this antibody reacts specifically with goat IgG and with light chains common to other goat immunoglobulins. No antibody was detected against non-immunoglobulin serum proteins. Less than 1% cross reactivity to chicken, human, mouse, rabbit and rat IgG was detected.

This antibody may cross react with IgG from other species.

APPLICATIONS Centrifuge tube to remove product from lid. Optimal working dilutions should be determined experimentally by the investigator. Prepare working dilution immediately before use.

Immunohistochemistry 1:50 - 1:500

Immunocytochemistry 1:50 - 1:500

Flow Cytometry 1:50 - 1:200

Immunofluorescence 1:50 - 1:500

APPLICATION NOTES Not all listed applications have been specifically tested by our laboratory.

DyLight® 594 is excited at 593 (in PBS) and emits at 618 (in PBS).

DyLight® is a trademark of Thermo Fisher Scientific Inc. and its subsidiaries.

ADDITIONAL INFO <https://www.bethyl.com/product/A50-207D4>
Use the link above to view SDS, a current list of citations, and other product specific information.

This document certifies that this product has met all of the quality control standards defined by Bethyl Laboratories, Inc.

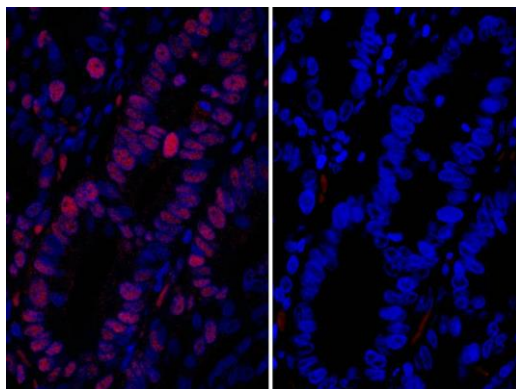
Eric McIntush, PhD | Chief Scientific Officer

Date: December 3, 2018

Bethyl Laboratories, Inc. • 25043 West FM 1097 • Montgomery, TX 77356 •
800.338.9579 • 936.597.6111 • 866.597.6105 (FAX) • www.bethyl.com • technical@bethyl.com

1

For in vitro laboratory use only. Not for any clinical, therapeutic or diagnostic use in humans or animals. Not for human or animal consumption. This product may not be resold or modified for resale without the prior written approval of Bethyl Laboratories, Inc. The information provided in this data sheet is believed to be correct but does not purport to be all-inclusive and is intended to be used as a guide. Bethyl Laboratories, Inc. shall not be liable or responsible in any way for use of either this information or the material supplied. Disposal of hazardous material may be subject to federal, state or local laws or regulations.

**Detection of human MCM3 by immunofluorescence.**

Sample: FFPE sections of human stomach carcinoma.

Primary Antibody: Affinity purified goat anti-MCM3 (Cat. No. IHC-00037 Lot1) used at a dilution of 1:100 (left) and no primary antibody (right). *Secondary Antibody:* Red-fluorescent F(ab')₂ donkey anti-goat IgG-heavy and light chain cross-adsorbed Antibody DyLight® 594 Conjugated (A50-207D4 Lot3) used at a dilution of 1:50 (10µg/ml).

Counterstain: DAPI (blue)