

# Beta-2-Glycoprotein 1 Monoclonal Antibody [6G3]

Mouse Monoclonal

Antigen Affinity Purified

Protein ID NP\_000033.2

Catalog No. A500-006A-T

GeneID 350

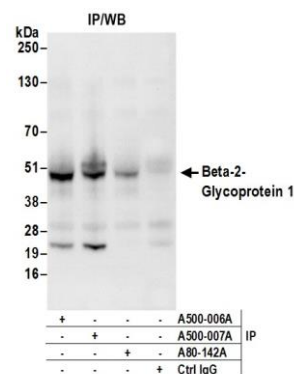
Lot No. A500-006A-T-1



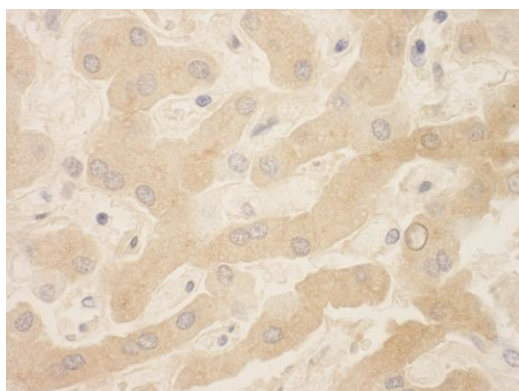
APPLICATIONS	WB, IP, IHC
SPECIES REACTIVITY	Human
AMOUNT	20 µl (2 blots)
CONCENTRATION	1000 µg/ml
STORAGE/SHELF LIFE	2 – 8° C / 1 year from date of receipt
PHYSICAL STATE	Liquid
BUFFER	Tris-buffered Saline containing 0.09% Sodium Azide
ISOTYPE	IgG1
CLONE #	6G3
ORIGIN	USA
PRODUCTION PROCEDURES	The immunogen was the Beta-2-Glycoprotein 1 (GeneID 350 and NP_000033.2) isolated from normal human serum. The antibody was isolated via affinity chromatography using purified antigen coupled to agarose beads.
APPLICATIONS	Centrifuge tube to remove product from lid. Optimal working dilutions should be determined experimentally by the investigator. Prepare working dilution immediately before use.  Western Blot 1:1000  Immunoprecipitation 10 µl/20 µl of normal human serum  Immunohistochemistry 1:100 – 1:200. Epitope retrieval with citrate buffer pH 6.0 is recommended for FFPE tissue sections.
APPLICATION NOTES	Validation by IP/Western Blot was performed using a 4–20% SDS-PAGE.
ADDITIONAL INFO	<a href="https://www.bethyl.com/product/A500-006A-T">https://www.bethyl.com/product/A500-006A-T</a> Use the link above to view SDS, a current list of citations, and other product specific information.

This document certifies that this product has met all of the quality control standards defined by Bethyl Laboratories, Inc.  
Eric McIntush, PhD | Chief Scientific Officer

Date: June 21, 2019



**Detection of human Beta-2-Glycoprotein 1 by WB of immunoprecipitates.** *Samples:* Normal human serum (20% of IP loaded). *Antibodies:* Mouse monoclonal anti-Beta-2-Glycoprotein 1 antibody [6G3] (A500-006A-T lot 1) used for IP at 10 µl per 20 µl normal human serum. Beta-2-Glycoprotein 1 was also immunoprecipitated by mouse anti-Beta-2-Glycoprotein 1 [7B8] (A500-007A) and by goat anti-Beta-2-Glycoprotein 1 (A80-142A). For blotting immunoprecipitated Beta-2-Glycoprotein 1, A500-006A-T was used at 1:1000. *Secondary:* HRP-conjugated goat anti-mouse IgG (A90-116P). Chemiluminescence with an exposure time of 10 seconds.



**Detection of human Beta-2-Glycoprotein 1 by immunohistochemistry.** *Sample:* FFPE section of human liver. *Antibody:* Mouse monoclonal anti-Beta-2-Glycoprotein 1 antibody [6G3] (A500-006A-T lot 1) used at 1:200. *Secondary:* HRP-conjugated goat anti-mouse IgG (A90-116P). *Substrate:* DAB.