

Beta-2-Glycoprotein 1 Monoclonal Antibody [7B8]

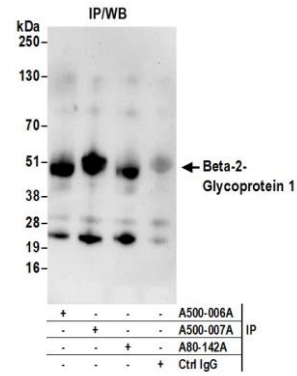
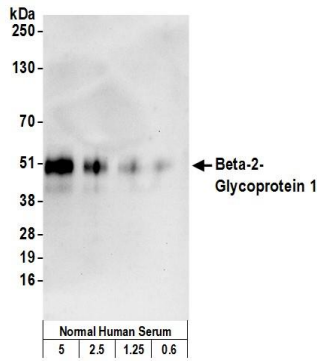
Mouse Monoclonal

Antigen Affinity Purified	Protein ID	NP_000033.2
Catalog No. A500-007A	GeneID	350
Lot No. A500-007A-1		



APPLICATIONS	WB, IP
SPECIES REACTIVITY	Human
AMOUNT	100 μ l (10 blots)
CONCENTRATION	1000 μ g/ml
STORAGE/SHELF LIFE	2 - 8° C / 1 year from date of receipt
PHYSICAL STATE	Liquid
BUFFER	Tris-buffered Saline containing 0.09% Sodium Azide
ISOTYPE	IgG1
CLONE #	7B8
ORIGIN	USA
PRODUCTION PROCEDURES	The immunogen was the Beta-2-Glycoprotein 1 (GeneID 350) isolated from normal human serum. The antibody was isolated via affinity chromatography using purified antigen coupled to agarose beads.
APPLICATIONS	Centrifuge tube to remove product from lid. Optimal working dilutions should be determined experimentally by the investigator. Prepare working dilution immediately before use. Western Blot 1:1000 Immunoprecipitation 10 μ l/20 μ l of normal human serum
APPLICATION NOTES	Validation by IP/Western Blot was performed using a 4-20% SDS-PAGE.
ADDITIONAL INFO	https://www.bethyl.com/product/A500-007A Use the link above to view SDS, a current list of citations, and other product specific information.

This document certifies that this product has met all of the quality control standards defined by Bethyl Laboratories, Inc.
Eric McIntush, PhD | Chief Scientific Officer Date: June 21, 2019



Detection of human Beta-2-Glycoprotein 1 by western blot. *Samples:* Normal human serum (5, 2.5, 1.25 and 0.6 µl of a 1:20 dilution). *Antibody:* Mouse monoclonal anti-Beta-2-Glycoprotein 1 antibody [7B8] (A500-007A lot 1) used at 1:1000. *Secondary:* HRP-conjugated goat anti-mouse IgG (A90-116P). Chemiluminescence with an exposure time of 10 seconds.

Detection of human Beta-2-Glycoprotein 1 by WB of immunoprecipitates. *Samples:* Normal human serum (20% of IP loaded). *Antibodies:* Mouse monoclonal anti-Beta-2-Glycoprotein 1 antibody [7B8] (A500-007A lot 1) used for IP at 10 µl per 20 µl normal human serum. Beta-2-Glycoprotein 1 was also immunoprecipitated by mouse anti-Beta-2-Glycoprotein 1 [6G1] (A500-006A) and by goat anti-Beta-2-Glycoprotein 1 (A80-142A). For blotting immunoprecipitated Beta-2-Glycoprotein 1, A500-007A was used at 1:1000. *Secondary:* HRP-conjugated goat anti-mouse IgG (A90-116P). Chemiluminescence with an exposure time of 10 seconds.