

MOV10 Monoclonal Antibody

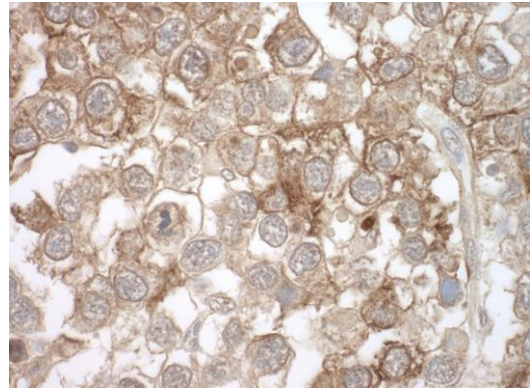
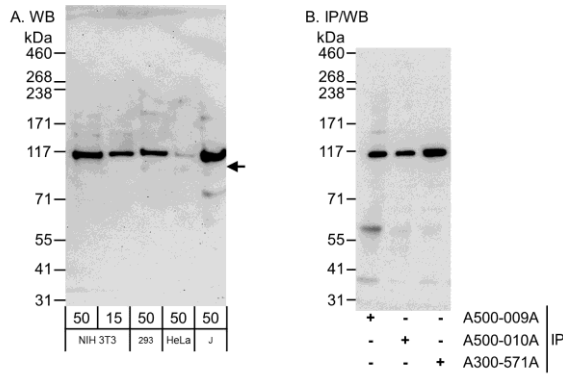
Mouse Monoclonal

Antigen Affinity Purified Protein ID NP_066014.1
Catalog No. A500-009A Gene ID 4343
Lot No. A500-009A-1



APPLICATIONS	WB, IP, IHC
REACTIVITY TESTED	Human and Mouse. Other species have not been tested.
PRESUMED REACTIVITY	Based on 100% sequence identity, this antibody is predicted to react with Mouse, Bovine, Dog, Horse, Rabbit, Guinea pig_10141, Panda, Orangutan, Rhesus Monkey, Gorilla, Chimpanzee, White-tufted-ear marmoset, European domestic ferret, Naked mole rat, Small-eared galago and Northern white-cheeked gibbon.
ISOTYPE	IgG1-K
CLONE #	15C1B8
AMOUNT	0.1 ml at 1 mg/ml
STORAGE/SHELF LIFE	2 - 8° C / 1 year from date of receipt
PHYSICAL STATE	Liquid
BUFFER	Tris-buffered Saline with 0.09% Sodium Azide
ORIGIN	USA
PRODUCTION PROCEDURES	Antibody was affinity purified using an epitope specific to MOV10 immobilized on solid support. The epitope recognized by A500-009A maps to a region between residue 953 and 1003 of human Moloney leukemia virus 10, homolog using the numbering given in entry NP_066014.1 (GeneID 4343). Immunoglobulin concentration was determined by extinction coefficient: absorbance at 280 nm of 1.4 equals 1.0 mg of IgG.
APPLICATIONS	Centrifuge tube to remove product from lid. Optimal working dilutions should be determined experimentally by the investigator. Prepare working dilution immediately before use. Western Blot 1:1,000 to 1:10,000 Immunoprecipitation 2 to 5 µg/mg lysate. Immunohistochemistry 1:500 to 1:2,000
APPLICATION NOTES	Validation by IP/Western Blot was performed using a Western Blot Gel 4-8%, 10 x 10 cm and ReliaBLOT® IP/Western Blot Reagents (Cat. No. WB120). Related products also available include ReliaBLOT® IP/WB kits, buffers and reagents. A90-116P Goat anti-mouse IgG-H&L-HRP conjugated was substituted for IHC-101d – Anti-Rabbit IHC antibody. It was used at a 1:100 dilution.
ADDITIONAL INFO	http://www.bethyl.com/product/A500-009A Use the link above to view SDS, a current list of citations, and other product specific information.

MOV10 Monoclonal Antibody: A500-009A



Detection of Human and Mouse MOV10 by Western Blot and Immunoprecipitation. *Samples:* Whole cell lysate from mouse NIH3T3 (50 and 15 µg for WB; 1 mg for IP, 20% of IP loaded), 293T (50 µg) and Jurkat (M50 µg) cells. *Antibodies:* Affinity purified mouse monoclonal anti-MOV10 antibody A500-090A-1 used for WB at 0.1 µg/ml (A) and 1 µg/ml (B) and used for IP at 6 µg/mg lysate. MOV10 was also immunoprecipitated by mouse monoclonal anti-MOV10 (A500-010A-1) and by polyclonal rabbit anti-MOV10 (A301-571A-2). *Detection:* Chemiluminescence with exposure times of 3 minutes (A) and 30 seconds (B).

Detection of Human MOV10 by Immunohistochemistry. *Sample:* FFPE section of human testicular seminoma. *Antibody:* Purified mouse monoclonal MOV10 antibody A500-009A used at a dilution of 1:1000. *Detection:* DAB staining using Immunohistochemistry Accessory Kit (Cat. No. IHC-101).