

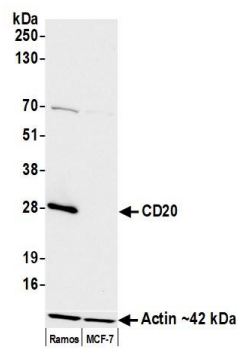
CD20 Monoclonal Antibody [L26]

Mouse Monoclonal

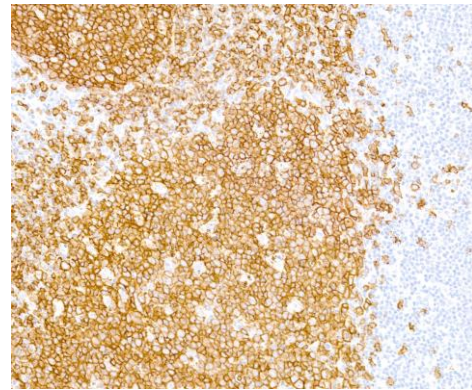
Purified		RefSeq ID	NP_690605.1
Catalog No.	A500-017A	Uniprot ID	P11836
Lot No.	A500-017A-2	GeneID	931

APPLICATIONS	WB, IHC, IHC-IF, Flow Cyt, mIF
SPECIES REACTIVITY	Human
AMOUNT	100 µl (50+ tests)
CONCENTRATION	300 µg/ml
STORAGE/SHELF LIFE	2 – 8°C / 1 year from date of receipt
PHYSICAL STATE	Liquid
BUFFER	Phosphate Buffered Saline (PBS) pH 8.2 with 0.1% BSA and 0.09% Sodium Azide
ISOTYPE	IgG2a
CLONE #	L26
ORIGIN	USA
PRODUCTION PROCEDURES	The antibody was purified from cell culture supernatant.
APPLICATIONS	Centrifuge tube to remove product from lid. Optimal working dilutions should be determined experimentally by the investigator. Prepare working dilution immediately before use. Western Blot 1:1000 Immunohistochemistry 1:100 – 1:500. Epitope retrieval with citrate buffer pH 6.0 is recommended for FFPE tissue sections. Immunofluorescence (IHC) 1:100 – 1:500. Epitope retrieval with citrate buffer pH6.0 is recommended for FFPE tissue sections. Flow Cytometry Fixed in 4% formaldehyde and permeabilized with 90% methanol. 0.25 µl per 1 x 10 ⁶ cells. Multiplex Immunofluorescence 1:250
APPLICATION NOTES	Validation by western blot was performed using a 4–8% SDS–PAGE.
IHC HUMAN CONTROLS	Bone Marrow, Spleen, Tonsil, Tumor-infiltrating Lymphocytes, Daudi Cells, Raji Cells, Ramos Cells, VLN3G2 Cells
ADDITIONAL INFO	https://www.fortislife.com/p/A500-017A Use the link above to view SDS, a current list of citations, and other product specific information.

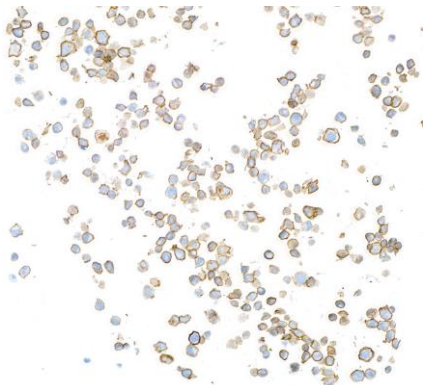
This document certifies that this product has met all of the quality control standards defined by Bethyl Laboratories, Inc.
Michael Spencer, PhD Date: December 21, 2022



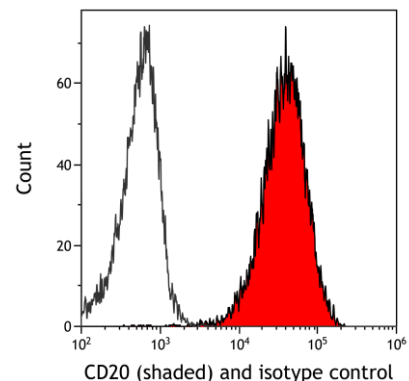
Detection of human CD20 by western blot. *Samples:* Whole cell lysate (25 μ g) from Ramos and MCF-7 cells prepared using NETN lysis buffer. *Antibody:* Mouse anti-CD20 monoclonal antibody [L26] (A500-017A lot 2) used at 1:1000. *Secondary:* HRP-conjugated goat anti-mouse IgG (A90-116P). Chemiluminescence with an exposure time of 3 seconds. Lower Panel: Rabbit anti-Actin recombinant monoclonal antibody [BLR057F] (A700-057).



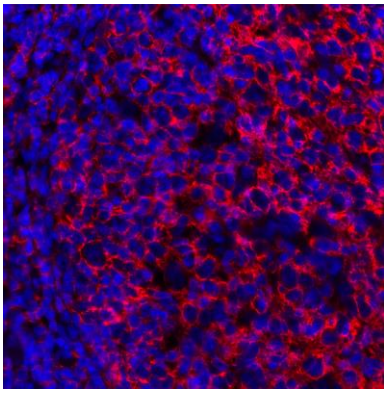
Detection of Human CD20 by Immunohistochemistry. *Sample:* FFPE section of human tonsil. *Antibody:* Purified mouse monoclonal anti-CD20 (Clone L26) antibody (A500-017 Lot2) used at a dilution of 1:500. *Detection:* DAB. Counterstain: IHC Hematoxylin (blue).



Detection of Human CD20 by Immunocytochemistry. *Sample:* FFPE section of VLN3G2 cells. *Antibody:* Purified mouse monoclonal anti-CD20 (Clone L26) antibody (A500-017 Lot2) used at a dilution of 1:500. *Detection:* DAB. Counterstain: IHC Hematoxylin (blue).

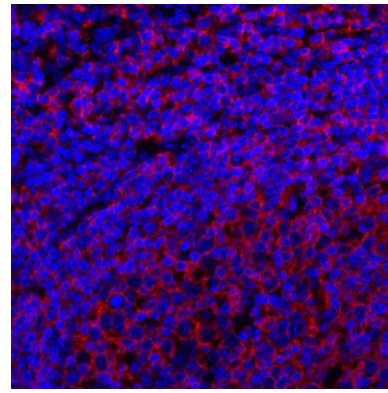


Detection of human CD20 (shaded) in Raji cells by flow cytometry. *Antibody:* Mouse anti-CD20 monoclonal antibody [L26] (A500-017A lot 2) or isotype control (unshaded). *Secondary:* DyLight[®] 488-conjugated goat anti-mouse IgG (A90-116D2).



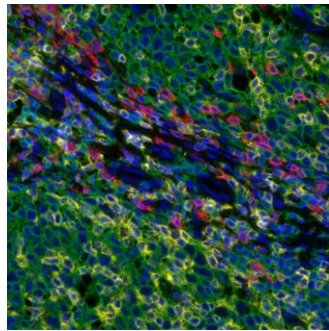
Detection of human CD20 by immunohistochemistry.

Sample: FFPE section of human tonsil. *Antibody:* Mouse monoclonal anti-CD20 antibody [L26] (A500-017A lot 1) used at 1:250. *Secondary:* DyLight® 594-conjugated goat anti-mouse IgG (A90-116D4).



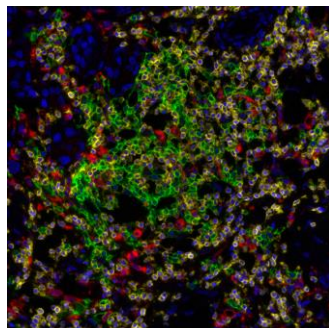
Detection of human CD20 (red) by immunohistochemistry.

Sample: FFPE section of human tonsil. *Antibody:* Mouse anti-CD20 monoclonal antibody [L26] (A500-017A lot 1) used at 1:250. *Secondary:* HRP-conjugated goat anti-mouse IgG (A90-116P). *Substrate:* Opal™. *Counterstain:* DAPI (blue).



Detection of human CD3E (yellow), CD8 alpha (red), and CD20 (green) in FFPE tonsil by IHC-IF.

Rabbit anti-CD3E recombinant monoclonal [BL-298-5D12] (A700-016), rabbit anti-CD8 alpha recombinant monoclonal [BLR044F] (A700-044), mouse anti-CD20 monoclonal [L26] (A500-017A). *Secondary:* HRP-conjugated goat anti-rabbit IgG (A120-501P) and HRP-conjugated goat anti-mouse IgG (A90-116P). *Substrate:* Opal™ 520, 620, and 690. *Counterstain:* DAPI (blue).



Detection of human CD3E (yellow), CD68 (red), and CD20 (green) in FFPE lung carcinoma by IHC-IF.

Rabbit anti-CD3E recombinant monoclonal [BL-298-5D12] (A700-016), mouse anti-CD68 monoclonal [KP-1] (A500-018A) and mouse anti-CD20 monoclonal [L26] (A500-017A). *Secondary:* HRP-conjugated goat anti-rabbit IgG (A120-501P) and HRP-conjugated goat anti-mouse IgG (A90-116P). *Substrate:* Opal™ 520, 620, and 690. *Counterstain:* DAPI (blue).