

# CD68 Recombinant Mouse Monoclonal Antibody [KP-1]

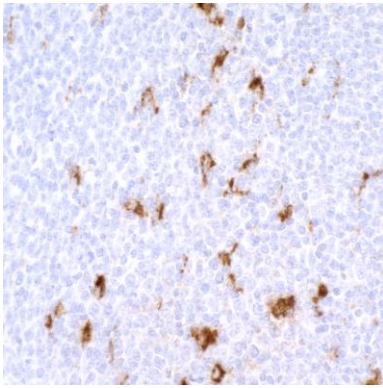
Mouse Recombinant Monoclonal

Purified		Protein ID	P34810
Catalog No.	A500-018A-T	GeneID	968
Lot No.	A500-018A-T-2		

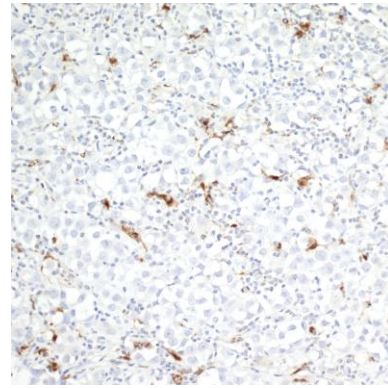


APPLICATIONS	IHC, IHC-IF, F, mIF
SPECIES REACTIVITY	Human
AMOUNT	10 µl (5+ tests)
CONCENTRATION	50 µg/ml
STORAGE/SHELF LIFE	2 – 8° C / 1 year from date of receipt
PHYSICAL STATE	Liquid
BUFFER	Phosphate Buffered Saline (PBS) containing 0.09% Sodium Azide
ISOTYPE	IgG1
CLONE #	KP-1
ORIGIN	USA
PRODUCTION PROCEDURES	VH and VL were cloned from the KP-1 hybridoma. Recombinant antibody was purified from cell culture supernatant.
APPLICATIONS	Centrifuge tube to remove product from lid. Optimal working dilutions should be determined experimentally by the investigator. Prepare working dilution immediately before use.  Immunohistochemistry 1:100 – 1:500. Epitope retrieval with Tris-EDTA pH 9.0 is recommended for FFPE tissue sections.  Immunofluorescence (IHC) 1:100 to 1:500. Epitope retrieval with citrate buffer pH6.0 is recommended for FFPE tissue sections.  Flow Cytometry 2 µl per 1 X 10 <sup>6</sup> cells  Multiplex Immunofluorescence 1:250
ADDITIONAL INFO	<a href="https://www.bethyl.com/product/A500-018A-T">https://www.bethyl.com/product/A500-018A-T</a> Use the link above to view SDS, a current list of citations, and other product specific information.

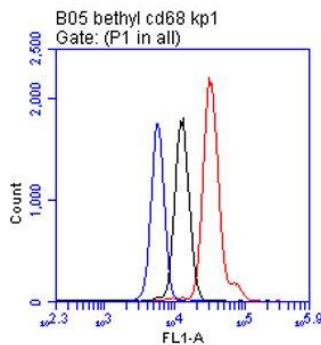
This document certifies that this product has met all of the quality control standards defined by Bethyl Laboratories, Inc.  
Eric McIntush, PhD | Chief Scientific Officer Date: February 3, 2020



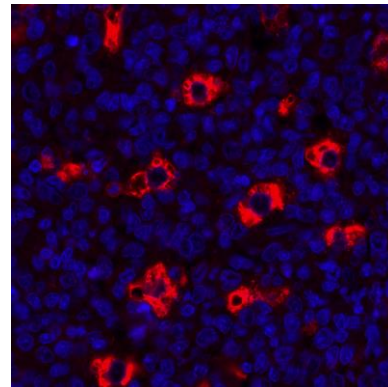
**Detection of human CD68 in FFPE tonsil by IHC.** *Antibody:* Mouse monoclonal anti-CD68 [KP-1] (A500-018A-T lot 2). *Secondary:* HRP-conjugated goat anti-mouse IgG (A90-116P). *Substrate:* DAB.



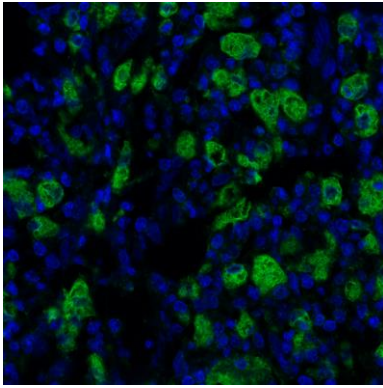
**Detection of human CD68 in FFPE seminoma by IHC.** *Antibody:* Mouse monoclonal anti-CD68 [KP-1] (A500-018A-T lot 2). *Secondary:* HRP-conjugated goat anti-mouse IgG (A90-116P). *Substrate:* DAB. Counterstain: Hematoxylin (blue).



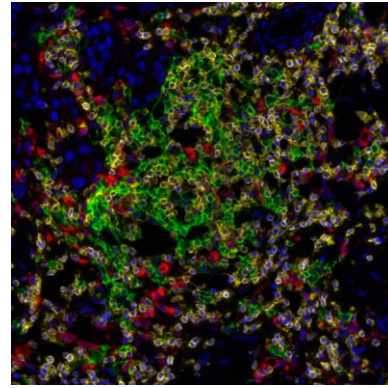
**Detection of CD68 in human whole blood.** Human whole blood was fixed in 4% formaldehyde. Red blood cells were lysed, and the sample was treated with 50% methanol.  $1 \times 10^6$  cells were incubated with 2  $\mu$ l of mouse monoclonal anti-CD68 antibody [KP-1] (A500-018A-T lot 1) (red), 0.1  $\mu$ g mouse IgG1 isotype control (black), or no antibody (blue). Antibody binding was detected with 0.1  $\mu$ g DyLight® 488-conjugated goat anti-mouse IgG (A90-116D2). The histogram represents gated granulocytes.



**Detection of human CD68 by immunohistochemistry.** *Sample:* FFPE section of human tonsil. *Antibody:* Mouse monoclonal anti-CD68 antibody [KP-1] (A500-018A-T lot 1) used at 1:100. *Secondary:* DyLight® 594-conjugated goat anti-mouse IgG (A90-116D4).



**Detection of human CD68 (green) by immunohistochemistry.** *Sample:* FFPE section of human colon carcinoma. *Antibody:* Mouse anti-CD68 monoclonal antibody [KP-1] (A500-018A-T lot 1) used at 1:500. *Secondary:* HRP-conjugated goat anti-mouse IgG (A90-116P). *Substrate:* Opal™. *Counterstain:* DAPI (blue).



**Detection of human CD3E (yellow), CD68 (red), and CD20 (green) in FFPE lung carcinoma by IHC-IF.** Rabbit anti-CD3E recombinant monoclonal [BL-298-5D12] (A700-016), mouse anti-CD68 monoclonal [KP-1] (A500-018A) and mouse anti-CD20 monoclonal [L26] (A500-017A). *Secondary:* HRP-conjugated goat anti-rabbit IgG (A120-501P) and HRP-conjugated goat anti-mouse IgG (A90-116P). *Substrate:* Opal™ 520, 620, and 690. *Counterstain:* DAPI (blue).