

# Cytokeratin Monoclonal Antibody [AE1 /AE3]

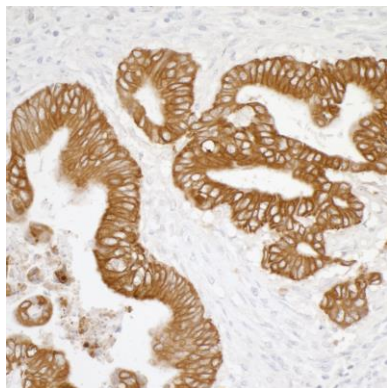
Mouse Monoclonal

Purified Protein ID NP\_005548, NP\_002267,  
Catalog No. A500-019A GeneID 3858  
Lot No. A500-019A-1

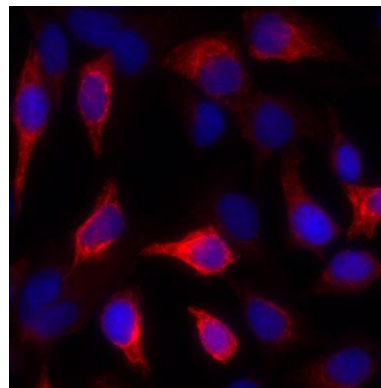


<b>APPLICATIONS</b>	IHC, IHC-IF, ICC-IF, mIF
<b>SPECIES REACTIVITY</b>	Human
<b>AMOUNT</b>	100 µl (50+ tests)
<b>CONCENTRATION</b>	200 µg/ml
<b>STORAGE/SHELF LIFE</b>	2 – 8° C / 1 year from date of receipt
<b>PHYSICAL STATE</b>	Liquid
<b>BUFFER</b>	Phosphate Buffered Saline (PBS) containing 0.09% Sodium Azide
<b>ISOTYPE</b>	IgG1
<b>CLONE #</b>	AE1 /AE3
<b>ORIGIN</b>	USA
<b>PRODUCTION PROCEDURES</b>	The antibody was purified from cell culture supernatant.  Immunogen: Human epidermal callus
<b>APPLICATIONS</b>	Centrifuge tube to remove product from lid. Optimal working dilutions should be determined experimentally by the investigator. Prepare working dilution immediately before use.  Immunohistochemistry 1:100 – 1:500. Epitope retrieval with citrate buffer pH 6.0 is recommended for FFPE tissue sections.  Immunofluorescence (IHC) 1:100 to 1:500. Epitope retrieval with citrate buffer pH6.0 is recommended for FFPE tissue sections.  Immunofluorescence (ICC) 1:100 – 1:500  Multiplex Immunofluorescence 1:250
<b>IHC HUMAN CONTROLS</b>	Colon Carcinoma, Prostate Carcinoma
<b>ADDITIONAL INFO</b>	<a href="https://www.bethyl.com/product/A500-019A">https://www.bethyl.com/product/A500-019A</a> Use the link above to view SDS, a current list of citations, and other product specific information.

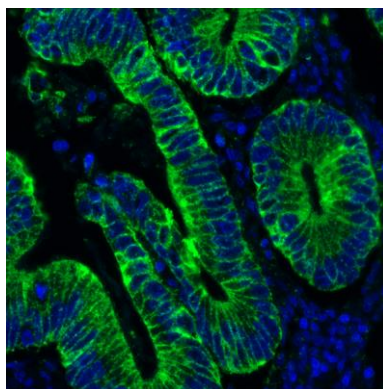
This document certifies that this product has met all of the quality control standards defined by Bethyl Laboratories, Inc.  
Eric McIntush, PhD | Chief Scientific Officer Date: November 5, 2019



**Detection of human cytokeratin by immunohistochemistry.** *Sample:* FFPE section of human colon carcinoma. *Antibody:* Mouse monoclonal anti-Cytokeratin antibody [AE1/AE3] (A500-019A Lot 1) used at a dilution of 1:250. *Secondary:* HRP-conjugated goat anti-mouse IgG (A90-116P). *Substrate:* DAB.



**Detection of human Cytokeratin by immunocytochemistry.** *Sample:* acetone/methanol fixed Hela cells. *Antibody:* Mouse monoclonal anti-Cytokeratin antibody [AE1/AE1] (A500-019A lot 1) used at 1:100. *Secondary:* DyLight® 594-conjugated goat anti-mouse IgG (A90-116D4). *Counterstain:* DAPI.



**Detection of human Cytokeratin (green) by immunohistochemistry.** *Sample:* FFPE section of human colon carcinoma. *Antibody:* Mouse anti-Cytokeratin monoclonal antibody [AE1/AE3] (A500-019A lot 1) used at 1:500. *Secondary:* HRP-conjugated goat anti-mouse IgG (A90-116P). *Substrate:* Opal™. *Counterstain:* DAPI (blue).