

Cytokeratin Monoclonal Antibody [AE1 /AE3]

Mouse Monoclonal

Purified		RefSeq ID	NP_005548, NP_002267,
Catalog No.	A500-019A	Uniprot ID	P13645, P02533, P19012,
Lot No.	A500-019A-2	GeneID	3858

APPLICATIONS IHC, IHC-IF, ICC-IF, mIF

SPECIES REACTIVITY Human

AMOUNT 100 µl (50+ tests)

CONCENTRATION 200 µg/ml

STORAGE/SHELF LIFE 2 - 8°C / 1 year from date of receipt

PHYSICAL STATE Liquid

BUFFER Phosphate Buffered Saline (PBS) pH 8.2 with 0.1% BSA and 0.09% Sodium Azide

ISOTYPE IgG1

CLONE # AE1 /AE3

ORIGIN USA

PRODUCTION PROCEDURES The antibody was purified from cell culture supernatant.

Immunogen: Human epidermal callus.

APPLICATIONS Centrifuge tube to remove product from lid. Optimal working dilutions should be determined experimentally by the investigator. Prepare working dilution immediately before use.

Immunohistochemistry 1:100 - 1:500. Epitope retrieval with citrate buffer pH 6.0 is recommended for FFPE tissue sections.

Immunofluorescence (IHC) 1:100 to 1:500. Epitope retrieval with citrate buffer pH6.0 is recommended for FFPE tissue sections.

Immunofluorescence (ICC) 1:100 - 1:500

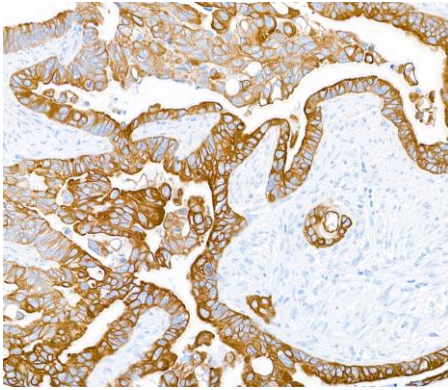
Multiplex Immunofluorescence 1:250

IHC HUMAN CONTROLS Breast Carcinoma, Colon Carcinoma, Ovarian Carcinoma, Prostate Carcinoma

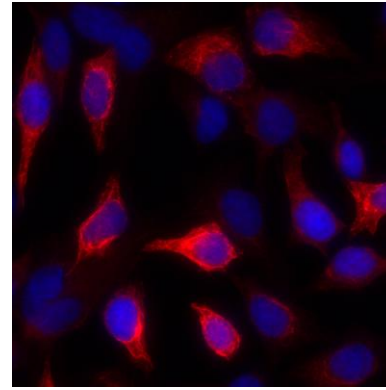
ADDITIONAL INFO <https://www.fortislife.com/p/A500-019A>

Use the link above to view SDS, a current list of citations, and other product specific information.

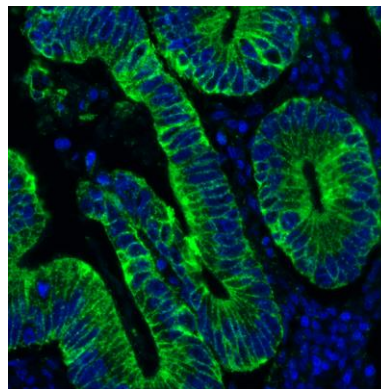
This document certifies that this product has met all of the quality control standards defined by Bethyl Laboratories, Inc.
Michael Spencer, PhD Date: September 29, 2022



Detection of human cytokeratin in FFPE colon carcinoma by immunohistochemistry. *Antibody:* Mouse anti-Cytokeratin monoclonal antibody [AE1/AE3] (A500-019 lot 2). *Secondary:* HRP-conjugated goat anti-mouse IgG (A90-116P). *Substrate:* DAB.



Detection of human Cytokeratin by immunocytochemistry. *Sample:* acetone/methanol fixed Hela cells. *Antibody:* Mouse monoclonal anti-Cytokeratin antibody [AE1/AE1] (A500-019A lot 1) used at 1:100. *Secondary:* DyLight® 594-conjugated goat anti-mouse IgG (A90-116D4). *Counterstain:* DAPI.



Detection of human Cytokeratin (green) by immunohistochemistry. *Sample:* FFPE section of human colon carcinoma. *Antibody:* Mouse anti-Cytokeratin monoclonal antibody [AE1/AE3] (A500-019A lot 1) used at 1:500. *Secondary:* HRP-conjugated goat anti-mouse IgG (A90-116P). *Substrate:* Opal™. *Counterstain:* DAPI (blue).