

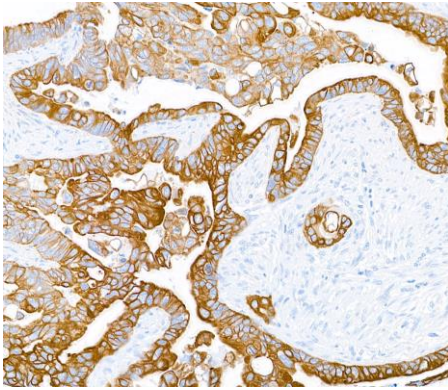
Cytokeratin Monoclonal Antibody [AE1 /AE3]

Mouse Monoclonal

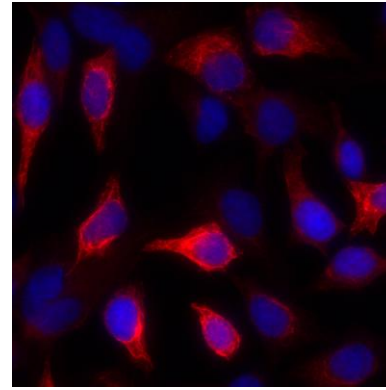
Purified		RefSeq ID	NP_005548, NP_002267,
Catalog No.	A500-019A-T	Uniprot ID	P13645, P02533, P19012,
Lot No.	A500-019A-T-2	GeneID	3858

APPLICATIONS	IHC, IHC-IF, ICC-IF, mIF
SPECIES REACTIVITY	Human
AMOUNT	10 µl (5+ tests)
CONCENTRATION	200 µg/ml
STORAGE/SHELF LIFE	2 - 8°C / 1 year from date of receipt
PHYSICAL STATE	Liquid
BUFFER	Phosphate Buffered Saline (PBS) pH 8.2 with 0.1% BSA and 0.09% Sodium Azide
ISOTYPE	IgG1
CLONE #	AE1 /AE3
ORIGIN	USA
PRODUCTION PROCEDURES	The antibody was purified from cell culture supernatant. Immunogen: Human epidermal callus
APPLICATIONS	Centrifuge tube to remove product from lid. Optimal working dilutions should be determined experimentally by the investigator. Prepare working dilution immediately before use. Immunohistochemistry 1:100 - 1:500. Epitope retrieval with citrate buffer pH 6.0 is recommended for FFPE tissue sections. Immunofluorescence (IHC) 1:100 to 1:500. Epitope retrieval with citrate buffer pH6.0 is recommended for FFPE tissue sections. Immunofluorescence (ICC) 1:100 - 1:500 Multiplex Immunofluorescence 1:250
IHC HUMAN CONTROLS	Breast Carcinoma, Colon Carcinoma, Ovarian Carcinoma, Prostate Carcinoma
ADDITIONAL INFO	https://www.fortislife.com/p/A500-019A-T Use the link above to view SDS, a current list of citations, and other product specific information.

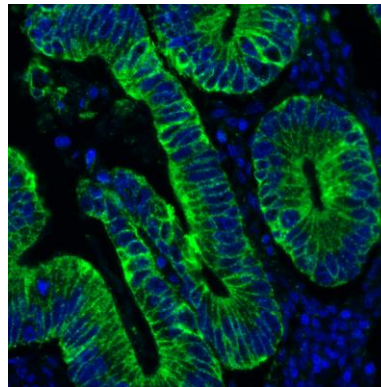
This document certifies that this product has met all of the quality control standards defined by Bethyl Laboratories, Inc.
Michael Spencer, PhD Date: September 28, 2022



Detection of human cytokeratin in FFPE colon carcinoma by immunohistochemistry. *Antibody:* Mouse anti-Cytokeratin monoclonal antibody [AE1/AE3] (A500-019-T lot 2). *Secondary:* HRP-conjugated goat anti-mouse IgG (A90-116P). *Substrate:* DAB.



Detection of human Cytokeratin by immunocytochemistry. *Sample:* acetone/methanol fixed Hela cells. *Antibody:* Mouse monoclonal anti-Cytokeratin antibody [AE1/AE1] (A500-019A-T lot 1) used at 1:100. *Secondary:* DyLight® 594-conjugated goat anti-mouse IgG (A90-116D4). *Counterstain:* DAPI.



Detection of human Cytokeratin (green) by immunohistochemistry. *Sample:* FFPE section of human colon carcinoma. *Antibody:* Mouse anti-Cytokeratin monoclonal antibody [AE1/AE3] (A500-019A-T lot 1) used at 1:500. *Secondary:* HRP-conjugated goat anti-mouse IgG (A90-116P). *Substrate:* Opal™. *Counterstain:* DAPI (blue).