

CD45RO Monoclonal Antibody [UCHL-1]

Mouse Monoclonal

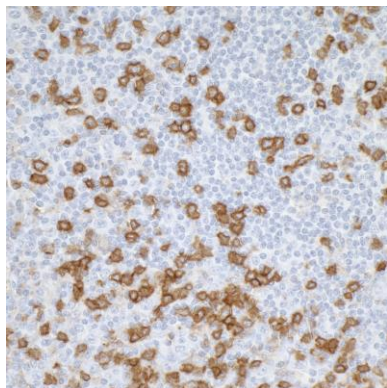
Purified		Protein ID	P08575
Catalog No.	A500-020A	GeneID	5788
Lot No.	A500-020A-1		



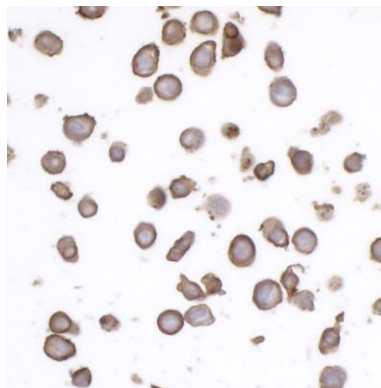
APPLICATIONS	WB, IHC, ICC, IHC-IF, mIF										
SPECIES REACTIVITY	Human										
AMOUNT	100 µl (50+ tests)										
CONCENTRATION	50 µg/ml										
STORAGE/SHELF LIFE	2 – 8° C / 1 year from date of receipt										
PHYSICAL STATE	Liquid										
BUFFER	Phosphate Buffered Saline (PBS) containing 0.09% Sodium Azide										
ISOTYPE	IgG2a										
CLONE #	UCHL-1										
ORIGIN	USA										
PRODUCTION PROCEDURES	The antibody was purified from cell culture supernatant. Immunogen: Cultured T-cells from an IL-2-dependent T-cell line (CA1)										
APPLICATIONS	Centrifuge tube to remove product from lid. Optimal working dilutions should be determined experimentally by the investigator. Prepare working dilution immediately before use. <table><tbody><tr><td>Western Blot</td><td>1:250</td></tr><tr><td>Immunohistochemistry</td><td>1:100 – 1:500. Epitope retrieval with citrate buffer pH 6.0 is recommended for FFPE tissue sections.</td></tr><tr><td>Immunocytochemistry</td><td>1:100 – 1:500. Epitope retrieval with citrate buffer pH 6.0 is recommended for FFPE cell sections.</td></tr><tr><td>Immunofluorescence (IHC)</td><td>1:100 to 1:500. Epitope retrieval with citrate buffer pH6.0 is recommended for FFPE tissue sections.</td></tr><tr><td>Multiplex Immunofluorescence</td><td>1:250</td></tr></tbody></table>	Western Blot	1:250	Immunohistochemistry	1:100 – 1:500. Epitope retrieval with citrate buffer pH 6.0 is recommended for FFPE tissue sections.	Immunocytochemistry	1:100 – 1:500. Epitope retrieval with citrate buffer pH 6.0 is recommended for FFPE cell sections.	Immunofluorescence (IHC)	1:100 to 1:500. Epitope retrieval with citrate buffer pH6.0 is recommended for FFPE tissue sections.	Multiplex Immunofluorescence	1:250
Western Blot	1:250										
Immunohistochemistry	1:100 – 1:500. Epitope retrieval with citrate buffer pH 6.0 is recommended for FFPE tissue sections.										
Immunocytochemistry	1:100 – 1:500. Epitope retrieval with citrate buffer pH 6.0 is recommended for FFPE cell sections.										
Immunofluorescence (IHC)	1:100 to 1:500. Epitope retrieval with citrate buffer pH6.0 is recommended for FFPE tissue sections.										
Multiplex Immunofluorescence	1:250										
APPLICATION NOTES	Validation by western blot was performed using a 4–8% SDS–PAGE.										
IHC HUMAN CONTROLS	Tonsil, Tumor-infiltrating Lymphocytes										
ADDITIONAL INFO	https://www.bethyl.com/product/A500-020A Use the link above to view SDS, a current list of citations, and other product specific information.										

This document certifies that this product has met all of the quality control standards defined by Bethyl Laboratories, Inc.
Eric McIntush, PhD | Chief Scientific Officer

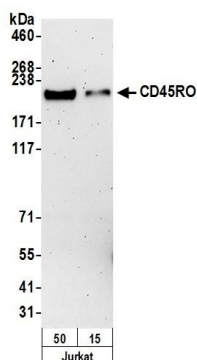
Date: November 5, 2019

**Detection of human CD45RO by immunohistochemistry.**

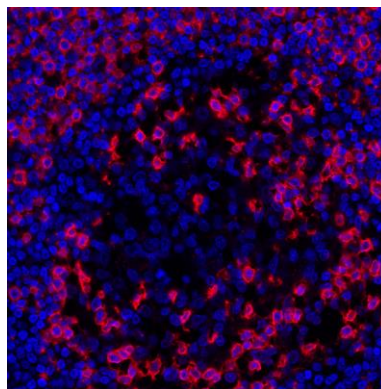
Sample: FFPE section of human tonsil. *Antibody:* Mouse monoclonal anti-CD45RO antibody [UCHL-1] (A500-020A Lot 1) used at a dilution of 1:250. *Secondary:* HRP-conjugated goat anti-mouse IgG (A90-116P). *Substrate:* DAB. *Counterstain:* Hematoxylin (blue).

**Detection of human CD45RO by immunocytochemistry.**

Sample: FFPE section of human SR (lymphoma) cell line. *Antibody:* mouse monoclonal anti-CD45RO antibody [UCHL-1] (A500-020A Lot 1) used at 1:250. *Secondary:* HRP-conjugated goat anti-mouse IgG (A90-116P). *Substrate:* DAB.



Detection of human CD45RO by western blot. *Samples:* Whole cell lysate (15 and 50 µg) from Jurkat cells prepared using NETN lysis buffer. *Antibody:* mouse anti-CD45RO antibody [UCHL-1] (A500-020A Lot 1) used at 1:250. *Secondary:* HRP-conjugated goat anti-mouse IgG (A90-116P). Chemiluminescence with an exposure time of 3 minutes.



Detection of human CD45RO (red) by immunohistochemistry. *Sample:* FFPE section of human lung carcinoma. *Antibody:* Mouse anti-CD45RO monoclonal antibody [UCHL-1] (A500-020A lot 1) used at 1:250. *Secondary:* HRP-conjugated goat anti-Mouse IgG (A90-116P). *Substrate:* Opal™. *Counterstain:* DAPI (blue).