

CD8 alpha Monoclonal Antibody [C8/144B]

Mouse Monoclonal

Purified		RefSeq ID	NP_001759.3
Catalog No.	A500-021A-T	Uniprot ID	P01732
Lot No.	3	GenelD	925

APPLICATIONS IHC, IHC-IF, Flow Cyt

SPECIES REACTIVITY Human

AMOUNT 10 µl (5+ tests)

CONCENTRATION 250 µg/ml

STORAGE/SHELF LIFE 2 – 8°C / 1 year from date of receipt

PHYSICAL STATE Liquid

BUFFER Borate Buffered Saline (BBS) pH 8.2 with 0.1% BSA and 0.09% Sodium Azide

ISOTYPE IgG1

CLONE # C8/144B

ORIGIN USA

PRODUCTION PROCEDURES The antibody was purified from cell culture supernatant.

Immunogen was a 13 amino acid synthetic peptide from the C-terminal cytoplasmic domain of alpha chain of human CD8 molecule.

APPLICATIONS Centrifuge tube to remove product from lid. Optimal working dilutions should be determined experimentally by the investigator. Prepare working dilution immediately before use.

Immunohistochemistry 1:100 – 1:500. Epitope retrieval with Tris-EDTA pH 9.0 is recommended for FFPE tissue sections.

Immunofluorescence (IHC) 1:100 to 1:500. Epitope retrieval with Tris-EDTA pH9.0 is recommended for FFPE tissue sections.

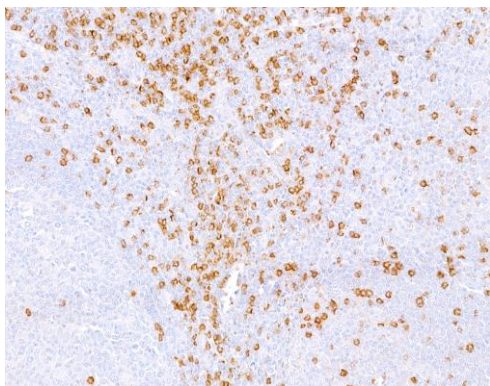
Flow Cytometry Fixed in 4% formaldehyde and permeabilized with 50% methanol. 2.5 µl per 1×10^6 cells.

IHC HUMAN CONTROLS Hodgkin Lymphoma, Metastatic Lymph Node, Tonsil, Tumor-infiltrating Lymphocytes

ADDITIONAL INFO <https://www.fortislife.com/p/A500-021A-T>

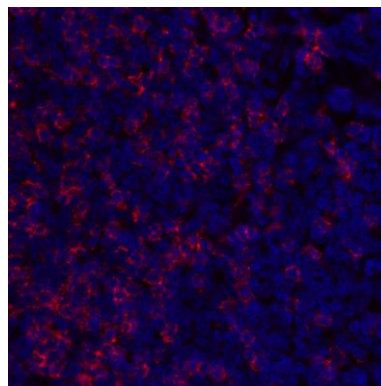
Use the link above to view SDS, a current list of citations, and other product specific information.

This document certifies that this product has met all of the quality control standards defined by Bethyl Laboratories, Inc.
Michael Spencer, PhD Date: June 8, 2023

**Detection of human CD8a by immunohistochemistry.**

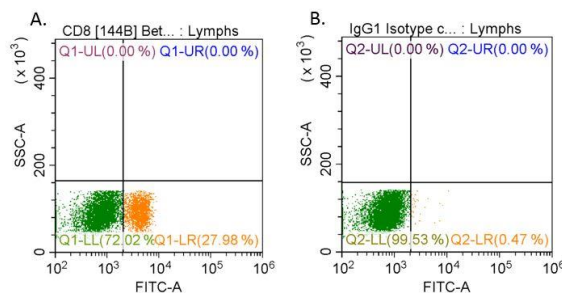
Sample: FFPE section of tonsil. *Antibody:* Mouse anti-CD8a monoclonal antibody [C8/144B] (A500-021A-3).

Secondary: HRP-conjugated goat anti-mouse IgG (A90-116P).

**Detection of human CD8 alpha by immunohistochemistry.**

Sample: FFPE section of human tonsil. *Antibody:* Mouse monoclonal anti-CD8 alpha antibody [C8/144B]

(A500-021A lot 1) used at 1:100. *Secondary:* DyLight® 594-conjugated goat anti-mouse IgG (A90-116D4).



Detection of human CD8 alpha (left) in human whole blood by flow cytometry. *Antibody:* Mouse anti-CD8 alpha monoclonal antibody [C8/144B] (A500-021A) or isotype control (right). *Secondary:* DyLight® 488-conjugated goat anti-mouse IgG (A90-116D2). Analysis performed on lymphocyte gated population.