

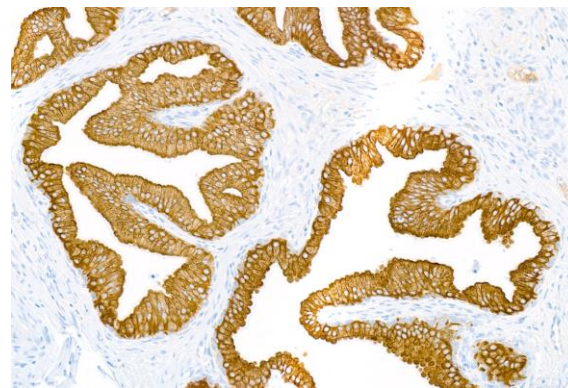
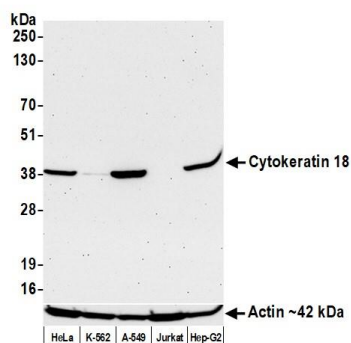
Cytokeratin 18 Monoclonal Antibody [LDK18]

Mouse Monoclonal

| | | | |
|-------------|-------------|------------|-------------|
| Purified | | RefSeq ID | NP_000215.1 |
| Catalog No. | A500-035A | Uniprot ID | P05783 |
| Lot No. | A500-035A-1 | GeneID | 3875 |

| | |
|------------------------------|--|
| APPLICATIONS | WB, IHC, ICC, Flow Cyt |
| SPECIES REACTIVITY | Human |
| AMOUNT | 100 µl (50+ tests) |
| CONCENTRATION | 100 µg/ml |
| STORAGE/SHELF LIFE | 2 – 8°C / 1 year from date of receipt |
| PHYSICAL STATE | Liquid |
| BUFFER | Phosphate Buffered Saline (PBS) pH 8.2 with 0.1% BSA and 0.09% Sodium Azide |
| ISOTYPE | IgG1 |
| CLONE # | LDK18 |
| ORIGIN | USA |
| PRODUCTION PROCEDURES | Monoclonal antibody was purified from cell culture supernatant. Immunogen was a peptide representing a region between residue 380 and the C-terminus (residue 430) of human cytokeratin 18 using the numbering given in entry NP_000215.1 (Gene ID 3875). |
| APPLICATIONS | Centrifuge tube to remove product from lid. Optimal working dilutions should be determined experimentally by the investigator. Prepare working dilution immediately before use. Western Blot 1:1,000 Immunohistochemistry 1:100 to 1:500. Epitope retrieval with citrate buffer pH 6.0 is recommended for FFPE tissue sections. Immunocytochemistry 1:100 to 1:500. Epitope retrieval with citrate buffer pH 6.0 is recommended for FFPE cell sections. Flow Cytometry Fixed in 4% formaldehyde and permeabilized with 90% methanol. 1 µl per 1 x 10 ⁶ cells. |
| IHC HUMAN CONTROLS | Breast Carcinoma, Colon Carcinoma, Ovarian Carcinoma, Prostate Carcinoma, Renal Cell Carcinoma, A-549 Cells, MCF-7 Cells, NCI-H226 Cells, OVCAR-3 Cells, OVCAR-4 Cells |
| ADDITIONAL INFO | https://www.fortislife.com/p/A500-035A Use the link above to view SDS, a current list of citations, and other product specific information. |

This document certifies that this product has met all of the quality control standards defined by Bethyl Laboratories, Inc.
Michael Spencer, PhD Date: March 6, 2023

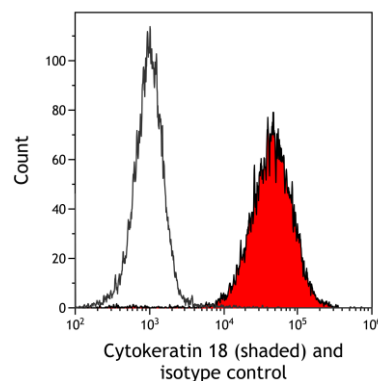
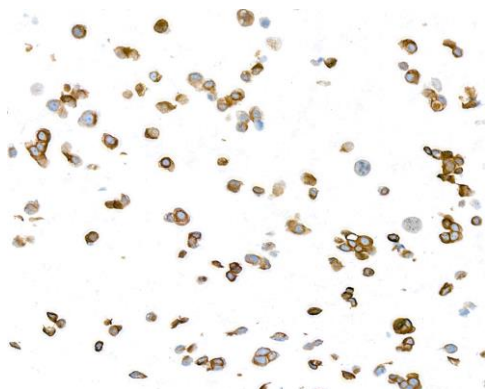


Detection of human Cytokeratin 18 by western blot.

Samples: Whole cell lysate (50 µg) from HeLa, K-562, A-549, Jurkat, and Hep-G2 cells prepared using NETN lysis buffer. **Antibody:** Mouse anti-Cytokeratin 18 monoclonal antibody [LDK18] (A500-035A lot 1) used at 1:1000. **Secondary:** HRP-conjugated goat anti-mouse IgG (A90-116P). **Detection:** Chemiluminescence with an exposure time of 75 seconds. Lower Panel: Rabbit anti-Actin recombinant monoclonal antibody [BLR057F] (A700-057).

Detection of human Cytokeratin 18 by immunohistochemistry.

Sample: FFPE section of prostate carcinoma. **Antibody:** Mouse anti-Cytokeratin 18 monoclonal antibody [LDK18] (A500-035A-1). **Secondary:** HRP-conjugated goat anti-mouse IgG (A90-116P).



Detection of human Cytokeratin 18 by immunocytochemistry.

Sample: FFPE section of Ovar 3 cells. **Antibody:** Mouse anti-Cytokeratin 18 monoclonal antibody [LDK18] (A500-035A-1). **Secondary:** HRP-conjugated goat anti-mouse IgG (A90-116P).

Detection of human Cytokeratin 18 (shaded) in A549 cells by flow cytometry.

Antibody: Mouse anti-CK18 monoclonal antibody [LDK18] (A500-035A) or secondary antibody only (unshaded). **Secondary:** DyLight® 650-conjugated goat anti-mouse IgG (A90-116D5).