

# HIF1- $\alpha$ Recombinant Monoclonal Antibody [BL-124-3F7]

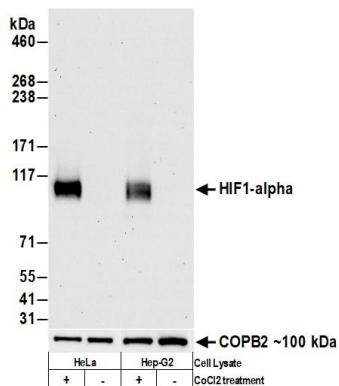
Rabbit Recombinant Monoclonal

Purified Protein ID NP\_001521.1  
Catalog No. A700-001 GeneID 3091  
Lot No. A700-001-3

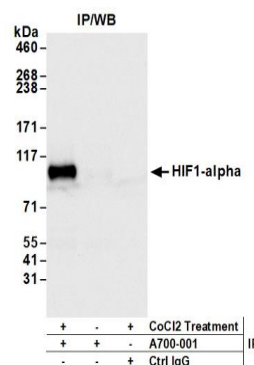
---

<b>APPLICATIONS</b>	WB, IP, IHC, ICC, ChIP-Seq
<b>SPECIES REACTIVITY</b>	Human
<b>AMOUNT</b>	100 $\mu$ l (10 blots)
<b>CONCENTRATION</b>	400 $\mu$ g/ml
<b>STORAGE/SHELF LIFE</b>	2 - 8°C / 1 year from date of receipt
<b>PHYSICAL STATE</b>	Liquid
<b>BUFFER</b>	Borate Buffered Saline (BBS) pH 8.2 with 0.1% BSA and 0.09% Sodium Azide
<b>ISOTYPE</b>	IgG
<b>CLONE #</b>	BL-124-3F7
<b>ORIGIN</b>	USA
<b>PRODUCTION PROCEDURES</b>	Recombinant antibody was purified from cell culture supernatant.  HIF1- $\alpha$ [BL-124-3F7] was raised against a recombinant protein corresponding to residues 433-826 of Human Hypoxia-inducible factor 1- $\alpha$ isoform 1 using the numbering given in entry NP_001521.1 or Q16665 (GeneID 3091).
<b>APPLICATIONS</b>	Centrifuge tube to remove product from lid. Optimal working dilutions should be determined experimentally by the investigator. Prepare working dilution immediately before use.  Western Blot 1:1000 Immunoprecipitation 20 $\mu$ l/mg lysate Immunohistochemistry 1:100 - 1:1,000. Epitope retrieval with citrate buffer pH 6.0 for 20 minutes using a pressure cooker is recommended for FFPE tissue sections. Immunocytochemistry 1:100 - 1:1,000. Epitope retrieval with citrate buffer pH 6.0 for 20 minutes using a pressure cooker is recommended for FFPE cell sections. ChIP-Seq 10 $\mu$ l per 30 $\mu$ g of chromatin
<b>IHC HUMAN CONTROLS</b>	Prostate Carcinoma, Renal Cell Carcinoma
<b>ADDITIONAL INFO</b>	<a href="https://www.fortislife.com/p/A700-001">https://www.fortislife.com/p/A700-001</a> Use the link above to view SDS, a current list of citations, and other product specific information.

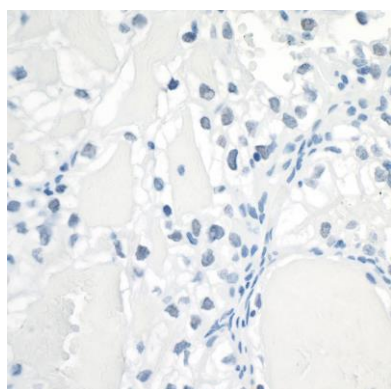
This document certifies that this product has met all of the quality control standards defined by Bethyl Laboratories, Inc.  
Michael Spencer, PhD Date: August 5, 2022



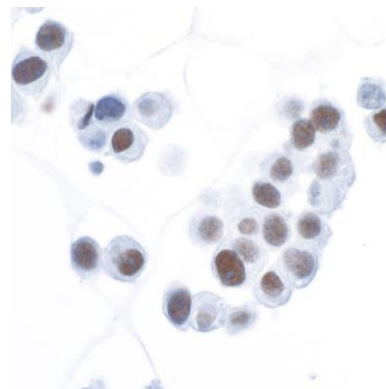
**Detection of human HIF1-alpha by western blot of HeLa and Hep-G2 cell lysate treated with 200 μM CoCl2 (+) or mock treated (-).** *Antibody:* Rabbit anti-HIF1-alpha recombinant monoclonal antibody [BL-124-3F7] (A700-001 lot 3) used at 1:1000. *Secondary:* HRP-conjugated goat anti-rabbit IgG (A120-101P). Chemiluminescence with an exposure time of 30 seconds. Lower Panel: Rabbit anti-COPB2 antibody (A304-523A).



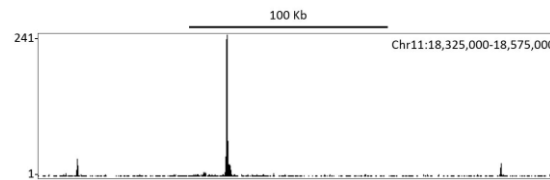
**Detection of human HIF1-alpha by western blot of immunoprecipitates from HeLa lysate treated with 200 μM CoCl2 (+) or mock treated (-).** *Antibodies:* Rabbit anti-HIF1-alpha recombinant monoclonal antibody [BL-124-3F7] (A700-001 lot 3) used for IP at 20 μl/mg lysate. HIF1-alpha was also immunoprecipitated by a previous lot of this antibody (A700-001 lot 2). For blotting immunoprecipitated HIF1-alpha, A700-001 was used at 1:1000. Chemiluminescence with an exposure time of 3 seconds.



**Detection of human Hif1-alpha in FFPE clear cell renal cell carcinoma by immunohistochemistry.** *Antibody:* Rabbit anti-Hif1-alpha recombinant monoclonal antibody [BL-124-3F7] (A700-001 lot 3). *Secondary:* HRP-conjugated goat anti-rabbit IgG (A120-501P). *Substrate:* DAB.



**Detection of human Hif1-alpha in FFPE Hep-G2 cells treated with cobalt chloride by immunocytochemistry.** *Antibody:* Rabbit anti-Hif1-alpha recombinant monoclonal antibody [BL-124-3F7] (A700-001 lot 3). *Secondary:* HRP-conjugated goat anti-rabbit IgG (A120-501P). *Substrate:* DAB.



**Localization of HIF1-alpha Binding Sites by ChIP-sequencing.** Chromatin from CoCl<sub>2</sub> treated Hep-G2 cells was immunoprecipitated with anti-HIF1 alpha antibody A700-001 and analyzed by DNA sequencing. The figure illustrates the peak distribution of HIF1 alpha binding within a 250 Kb region of chromosome 11 as detected using anti-HIF1-alpha antibody A700-001. ChIP-seq validation performed by Active Motif, Carlsbad, CA.