

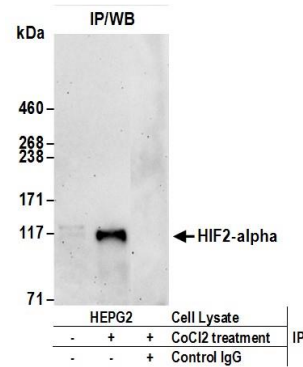
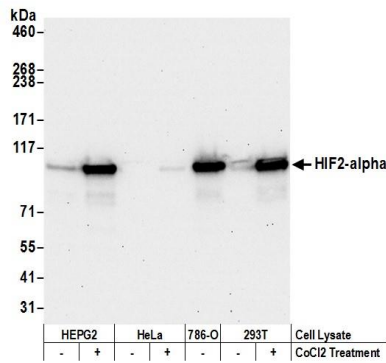
HIF2- α Recombinant Monoclonal Antibody [BL-95-1A2]

Rabbit Recombinant Monoclonal

Purified Protein ID NP_001421.2
Catalog No. A700-003 GeneID 2034
Lot No. A700-003-1

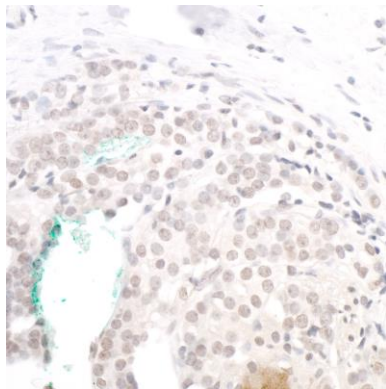


APPLICATIONS	WB, IP, IHC-P, ICC, ChIP-Seq
SPECIES REACTIVITY	Human
ISOTYPE	IgG
CLONE #	BL-95-1A2
AMOUNT	100 μ l (10 blots)
STORAGE/SHELF LIFE	2 - 8 $^{\circ}$ C / 1 year from date of receipt
PHYSICAL STATE	Liquid
BUFFER	Borate Buffered Saline (BBS) pH 8.2 with 0.1% BSA
ORIGIN	USA
PRODUCTION PROCEDURES	Recombinant antibody was purified from cell culture supernatant. The epitope recognized by A700-003 maps to a region between residues 400 and 450 of human endothelial PAS domain protein 1 using the numbering given in entry NP_001421.2 (GeneID 2034).
APPLICATIONS	Centrifuge tube to remove product from lid. Optimal working dilutions should be determined experimentally by the investigator. Prepare working dilution immediately before use. Western Blot 1:1000 Immunoprecipitation 5 to 20 μ l per 0.5 mg lysate Immunohistochemistry 1:200 to 1:2,000. Epitope retrieval with citrate buffer pH6.0 for 20 minutes using a pressure cooker is recommended for FFPE tissue sections. Immunocytochemistry 1:200 to 1:2,000. Epitope retrieval with citrate buffer pH6.0 for 20 minutes using a pressure cooker is recommended for FFPE cells sections. ChIP-Seq 10 to 40 μ l per 30 μ g of chromatin
ADDITIONAL INFO	http://www.bethyl.com/product/A700-003 Use the link above to view SDS, a current list of citations, and other product specific information.

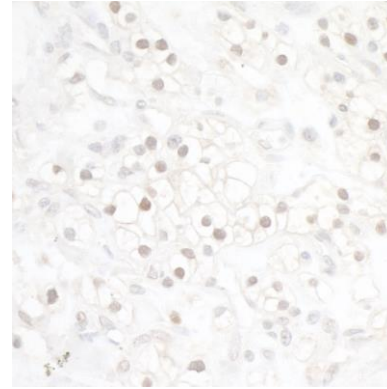


Detection of Human HIF2-alpha by Western Blot. *Samples:* Whole cell lysate (50 µg) from HEPG2, HeLa, 786-O, and 293T cells were treated with 200 µM cobalt chloride (+) or mock treated (-). *Antibody:* Rabbit anti-HIF2-alpha rabbit monoclonal antibody [BL-95-1A2] A700-003 (lot number A700-003-1) used for WB at 1:1000. *Detection:* Chemiluminescence with exposure times of 30 seconds.

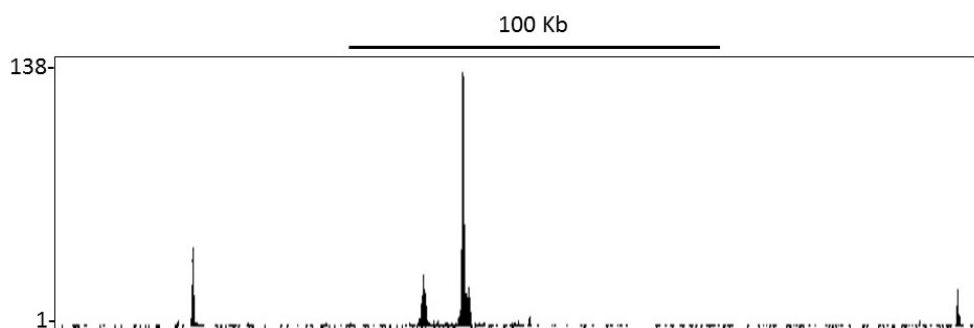
Detection of Human HIF2-alpha by Western Blot of Immunoprecipitates. *Samples:* Whole cell lysate (0.5 mg for IP, 20% of IP loaded) from HEPG2 cells treated with 200 µM cobalt chloride (+) or mock treated (-). *Antibody:* Rabbit anti-HIF2-alpha recombinant monoclonal antibody [BL-95-1A2] A700-003 (lot number A700-003-1) used for IP at 10 µl per reaction. For blotting immunoprecipitated HIF2-alpha, A700-003 was used at 1:400. *Detection:* Chemiluminescence with exposure times of 30 seconds.



Detection of Human HIF2-alpha by Immunohistochemistry. *Sample:* FFPE section of prostate carcinoma. *Antibody:* Rabbit anti-HIF2-alpha recombinant monoclonal antibody [BL-95-1A2] A700-003 (lot A700-003-1) used for immunohistochemistry at 1:2,000. *Detection:* DAB



Detection of Human HIF2-alpha by Immunohistochemistry. *Sample:* FFPE section of renal cell carcinoma. *Antibody:* Rabbit anti-HIF2-alpha recombinant monoclonal antibody [BL-95-1A2] A700-003 (lot A700-003-1) used for immunohistochemistry at 1:400. *Detection:* DAB



Localization of HIF2-alpha Binding Sites by ChIP-sequencing. Chromatin from subcutaneous human tumor 786-O cells was immunoprecipitated with anti-HIF2-alpha antibody A700-003 and analyzed by DNA sequencing. The figure illustrates the peak distribution of HIF2-alpha binding within a 250 Kb region of chromosome 11 as detected using anti-HIF2-alpha antibody A700-003. ChIP-seq validation performed by Active Motif, Carlsbad, CA.