

BRD4 Recombinant Monoclonal Antibody [BL-149-2H5]

Rabbit Recombinant Monoclonal

Purified Protein ID NP_490597.1
Catalog No. A700-004 GeneID 23476
Lot No. A700-004-1



APPLICATIONS WB, IP, IHC-P, ICC, IF, ChIP-Seq

SPECIES REACTIVITY Human

ISOTYPE IgG

CLONE # BL-149-2H5

AMOUNT 100 µl (10 blots)

STORAGE/SHELF LIFE 2 - 8° C / 1 year from date of receipt

PHYSICAL STATE Liquid

BUFFER Borate Buffered Saline (BBS) pH 8.2 with 0.1% BSA

ORIGIN USA

PRODUCTION PROCEDURES Recombinant antibody was purified from cell culture supernatant.

The epitope recognized by A700-004 maps to a region between residue 1312 and 1362 of human bromodomain-containing protein 4 using the numbering given in entry NP_490597.1 (GeneID 23476).

APPLICATIONS Centrifuge tube to remove product from lid. Optimal working dilutions should be determined experimentally by the investigator. Prepare working dilution immediately before use.

Western Blot 1:1000

Immunoprecipitation 5 to 20 µl per 0.5 mg lysate

Immunohistochemistry 1:25 to 1:250. Epitope retrieval with citrate buffer pH6.0 is recommended for FFPE tissue sections.

Immunocytochemistry 1:25 to 1:250. Formaldehyde fixation is recommended. Permeabilization with Triton-X 100 is recommended for formaldehyde-fixed cells.

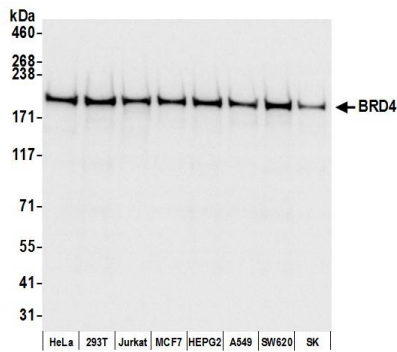
Immunofluorescence 1:25 to 1:250.

ChIP-Seq 10 to 40 µl per 30 µg of chromatin

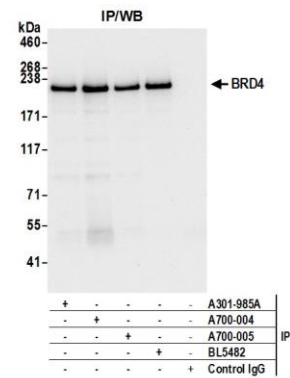
IHC HUMAN CONTROLS Breast Carcinoma, Ovarian Carcinoma

ADDITIONAL INFO <http://www.bethyl.com/product/A700-004>

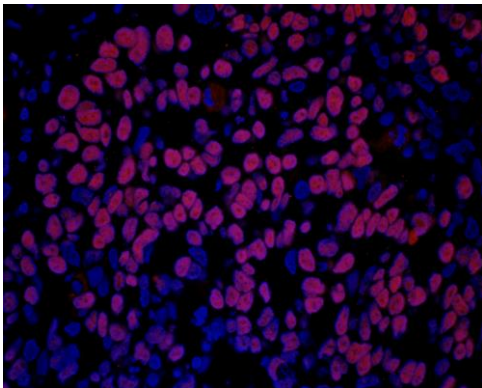
Use the link above to view SDS, a current list of citations, and other product specific information.



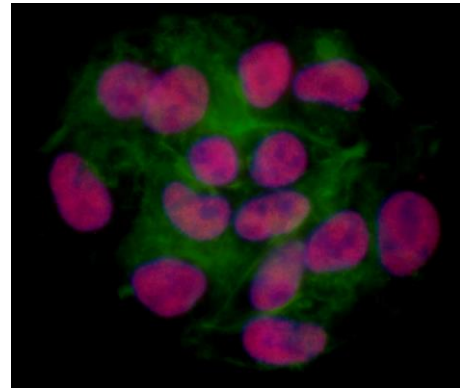
Detection of Human BRD4 by Western Blot. *Samples:* Whole cell lysate (50 µg) from HeLa, 293T, Jurkat, MCF7, HEPG2, A549, SW620, and SK-MEL28 (SK) prepared using NETN lysis buffer. *Antibody:* Rabbit anti-BRD4 recombinant monoclonal antibody [BL-149-2H5] A700-004 (lot number A700-004-1) used for WB at 1:1000. *Detection:* Chemiluminescence with an exposure time of 10 seconds.



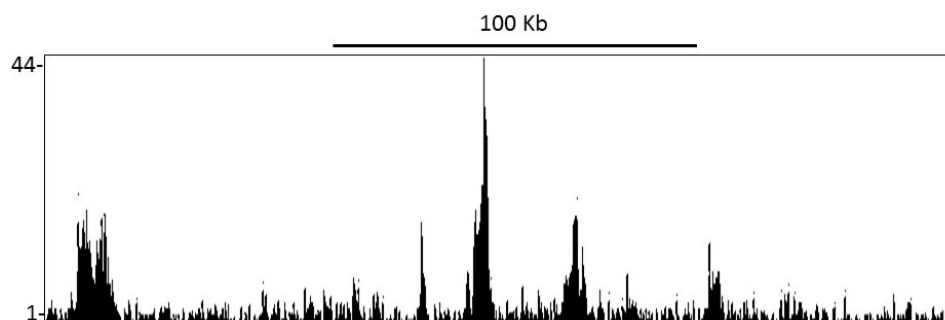
Detection of Human BRD4 by Western Blot of Immunoprecipitates. *Samples:* Whole cell lysate (0.5 or 1.0 mg per IP reaction; 20% of IP loaded) from HeLa cells prepared using NETN lysis buffer. *Antibodies:* Rabbit anti-BRD4 recombinant monoclonal antibody [BL-149-2H5] A700-004 (lot A700-004-1) used for IP at 25 µl per reaction. BRD4 was also immunoprecipitated by rabbit anti-BRD4 polyclonal antibodies A301-985A and BL5482 and rabbit anti-BRD4 recombinant monoclonal antibody [BL151-6F11] A700-005. For blotting immunoprecipitated BRD4, A700-004 was used at 1:100. *Detection:* Chemiluminescence with an exposure time of 3 seconds.



Detection of Human BRD4 by Immunohistochemistry. *Sample:* FFPE section of ovarian carcinoma. *Antibody:* Rabbit anti-BRD4 recombinant monoclonal antibody [BL-149-2H5] A700-004 (lot number A700-004-1) used for immunohistochemistry at 1:50. *Detection:* Red-fluorescent Goat anti-Rabbit IgG-heavy and light chain, cross-adsorbed Antibody DyLight® 594 Conjugated.



Detection of Human BRD4 by Immunocytochemistry. *Sample:* Formaldehyde-fixed HepG2 cells. *Antibody:* Rabbit anti-BRD4 recombinant monoclonal antibody [BL-149-2H5] A700-004 (lot number A700-004-1) used for immunohistochemistry at 1:50. *Detection:* Red-fluorescent Goat anti-Rabbit IgG-heavy and light chain, cross-adsorbed Antibody DyLight® 594 Conjugated.



Localization of BRD4 Binding Sites by ChIP–sequencing. Chromatin from Mia PaCa–2 cells was immunoprecipitated with anti–BRD4 antibody A700–004 and analyzed by DNA sequencing. The figure illustrates the peak distribution of BRD4 binding within a 250 Kb region of chromosome 7 as detected using anti–BRD4 antibody A700–004. ChIP–seq validation performed by Active Motif, Carlsbad, CA.