

BRD4 Recombinant Monoclonal Antibody [BL-151-6F11]

Rabbit Recombinant Monoclonal

Purified	Protein ID	NP_490597.1
Catalog No. A700-005	GeneID	23476
Lot No. A700-005-2		



APPLICATIONS	WB, IP, IHC, IHC-IF, ICC-IF, F
SPECIES REACTIVITY	Human, Mouse
AMOUNT	100 µl (10 blots)
CONCENTRATION	100 µg/ml
STORAGE/SHELF LIFE	2 – 8° C / 1 year from date of receipt
PHYSICAL STATE	Liquid
BUFFER	Borate Buffered Saline (BBS) pH 8.2 with 0.1% BSA and 0.09% Sodium Azide
ISOTYPE	IgG
CLONE #	BL-151-6F11
ORIGIN	USA
PRODUCTION PROCEDURES	Recombinant antibody was purified from cell culture supernatant.

The epitope recognized by A700-005 maps to a region between residue 1312 and 1362 of human bromodomain-containing protein 4 using the numbering given in entry NP_490597.1 (GeneID 23476).

APPLICATIONS Centrifuge tube to remove product from lid. Optimal working dilutions should be determined experimentally by the investigator. Prepare working dilution immediately before use.

Western Blot	1:1000
Immunoprecipitation	20 µl/mg lysate
Immunohistochemistry	1:25 – 1:250. Epitope retrieval with citrate buffer pH 6.0 is recommended for FFPE tissue sections.
Immunofluorescence (IHC)	1:25 – 1:250. Epitope retrieval with citrate buffer pH 6.0 is recommended for FFPE tissue sections.
Immunofluorescence (ICC)	1:25 – 1:250. Formaldehyde fixation is recommended. Permeabilization with Triton-X 100 is recommended for formaldehyde-fixed cells.
Flow Cytometry	Fixed in 4% formaldehyde and permeabilized with 90% methanol. 1 µl per 1 x 10 ⁶ cells.

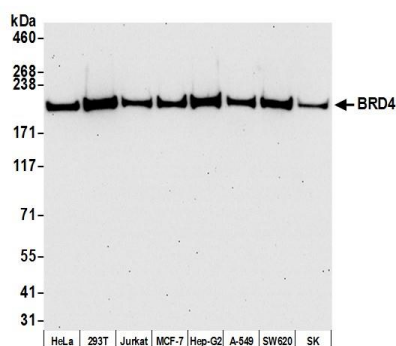
IHC HUMAN CONTROLS Breast Carcinoma, Ovarian Carcinoma, A-549 Cells, HEK293T Cells, Hep-G2 Cells, Jurkat Cells, KG-1 Cells

ADDITIONAL INFO <https://www.bethyl.com/product/A700-005>

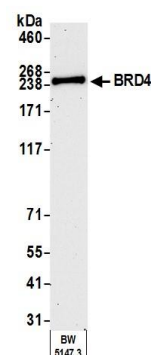
Use the link above to view SDS, a current list of citations, and other product specific information.

This document certifies that this product has met all of the quality control standards defined by Bethyl Laboratories, Inc.
Eric McIntush, PhD | Chief Scientific Officer

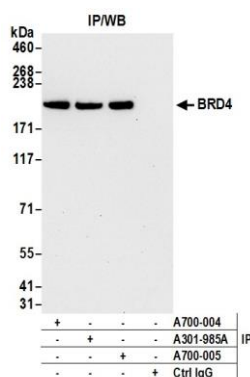
Date: August 29, 2019



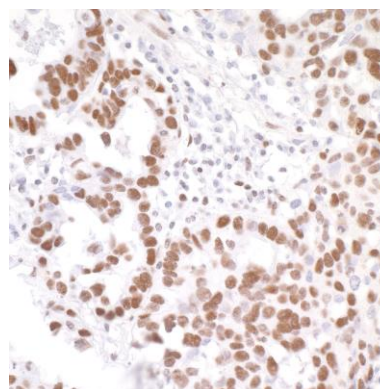
Detection of human BRD4 by western blot. *Samples:* Whole cell lysate (50 µg) from HeLa, HEK293T, Jurkat, MCF-7, Hep-G2, A-549, SW620, and SK-MEL-28 (SK) cells prepared using NETN lysis buffer. *Antibody:* Rabbit anti-BRD4 recombinant monoclonal antibody [BL-151-6F11] (A700-005 lot 2) used at 1:1000. *Secondary:* HRP-conjugated goat anti-rabbit IgG (A120-101P). Chemiluminescence with an exposure time of 30 seconds.



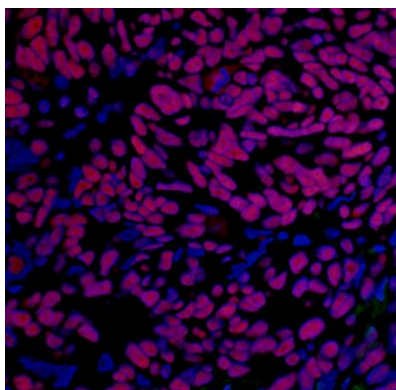
Detection of mouse BRD4 by western blot. *Samples:* Whole cell lysate (50 µg) from BW5147.3 cells prepared using NETN lysis buffer. *Antibody:* Rabbit anti-BRD4 recombinant monoclonal antibody [BL-151-6F11] (A700-005 lot 2) used at 1:1000. *Secondary:* HRP-conjugated goat anti-rabbit IgG (A120-101P). Chemiluminescence with an exposure time of 75 seconds.



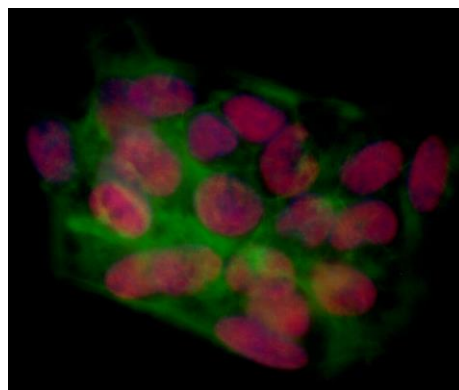
Detection of human BRD4 by western blot of immunoprecipitates. *Samples:* Whole cell lysate (1.0 mg per IP reaction; 20% of IP loaded) from HeLa cells prepared using NETN lysis buffer. *Antibodies:* Rabbit anti-BRD4 recombinant monoclonal antibody [BL-151-6F11] (A700-005 lot 2) used for IP at 20 µl/mg lysate. BRD4 was also immunoprecipitated by rabbit anti-BRD4 recombinant monoclonal antibody [BL-149-2H5] (A700-004) and rabbit anti-BRD4 polyclonal antibody (A301-985A). For blotting immunoprecipitated BRD4, A700-005 was used at 1:1000. Chemiluminescence with an exposure time of 10 seconds.



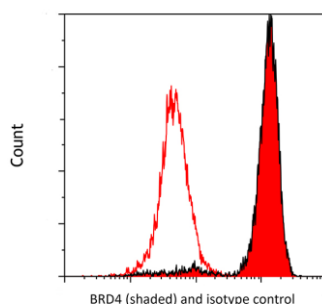
Detection of human BRD4 by immunohistochemistry. *Sample:* FFPE section of ovarian carcinoma. *Antibody:* Rabbit anti-BRD4 recombinant monoclonal antibody [BL-151-6F11] (A700-005-2) used at 1:250. *Secondary:* HRP-conjugated goat anti-rabbit IgG (A120-501P). *Substrate:* DAB.

**Detection of human BRD4 by immunohistochemistry.**

Sample: FFPE section of ovarian carcinoma. *Antibody:* Rabbit anti-BRD4 recombinant monoclonal antibody [BL-151-6F11] (A700-005 lot 1) used at 1:50. *Secondary:* DyLight® 594-conjugated goat anti-rabbit IgG antibody (A120-201D4).

**Detection of human BRD4 by immunocytochemistry.**

Sample: formaldehyde-fixed Hep-G2 cells. *Antibody:* Rabbit anti-BRD4 recombinant monoclonal antibody [BL-151-6F11] (A700-005 lot 1) used at 1:50. *Secondary:* DyLight® 594-conjugated goat anti-rabbit IgG antibody (A120-201D4).



Detection of human BRD4 (shaded) in KG-1 cells by flow cytometry. *Antibody:* Rabbit anti-BRD4 recombinant monoclonal [BL-151-6F11] (A700-005 lot 2) or isotype control (unshaded). *Secondary:* DyLight® 650-conjugated goat anti-rabbit IgG (A120-201D5).