

# PTPN12 Recombinant Monoclonal Antibody [BL-5-2F8]

Rabbit Recombinant Monoclonal

Purified	Protein ID	NP_002826.2
Catalog No. A700-007	GeneID	5782
Lot No. A700-007-1		

---

<b>APPLICATIONS</b>	WB, IP, IHC, ICC
<b>SPECIES REACTIVITY</b>	Human, Mouse
<b>AMOUNT</b>	100 µl (10 blots)
<b>CONCENTRATION</b>	40 µg/ml
<b>STORAGE/SHELF LIFE</b>	2 – 8°C / 1 year from date of receipt
<b>PHYSICAL STATE</b>	Liquid
<b>BUFFER</b>	Borate Buffered Saline (BBS) pH 8.2 with 0.1% BSA and 0.09% Sodium Azide
<b>ISOTYPE</b>	IgG
<b>CLONE #</b>	BL-5-2F8
<b>ORIGIN</b>	USA
<b>PRODUCTION PROCEDURES</b>	Recombinant antibody was purified from cell culture supernatant.

The epitope recognized by A700-007 maps to a region between residues 499 and 780 of human Protein Tyrosine Phosphatase, non-receptor type 12 using the numbering given in Swiss-Prot entry NP\_002826.2 (GeneID 5782).

**APPLICATIONS** Centrifuge tube to remove product from lid. Optimal working dilutions should be determined experimentally by the investigator. Prepare working dilution immediately before use.

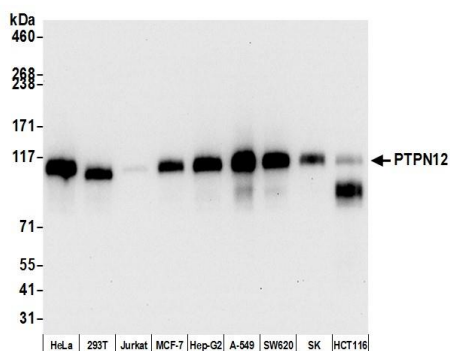
Western Blot	1:1000
Immunoprecipitation	20 µl/0.5 mg lysate
Immunohistochemistry	1:20 – 1:200. Epitope retrieval with citrate buffer pH 6.0 is recommended for FFPE tissue sections.
Immunocytochemistry	1:20 – 1:200. Epitope retrieval with citrate buffer pH6.0 is recommended for FFPE cell sections.

**IHC HUMAN CONTROLS** Breast, Lung, Mammary Gland, A-549 Cells, SW620 Cells

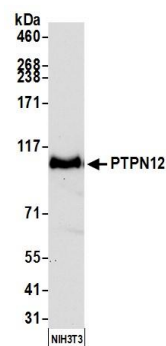
**ADDITIONAL INFO** <https://www.fortislife.com/p/A700-007>

Use the link above to view SDS, a current list of citations, and other product specific information.

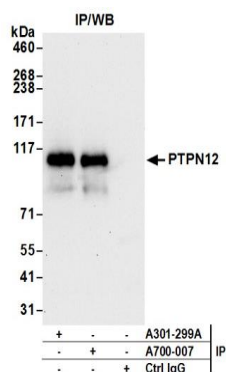
This document certifies that this product has met all of the quality control standards defined by Bethyl Laboratories, Inc.  
Michael Spencer, PhD Date: August 5, 2022



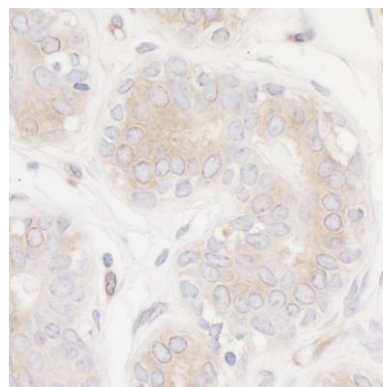
**Detection of human PTPN12 by western blot.** *Samples:* Whole cell lysate (5 µg) from HeLa, HEK293T, Jurkat, MCF-7, Hep-G2, A-549, SW620, SK-MEL-28 [SK], and HCT 116 prepared using NETN lysis buffer. *Antibody:* Rabbit anti-PTPN12 recombinant monoclonal antibody [BL-5-2F8] (A700-007 lot 1) used at 1:1000. *Secondary:* HRP-conjugated goat anti-rabbit IgG (A120-101P). Chemiluminescence with an exposure time of 10 seconds.



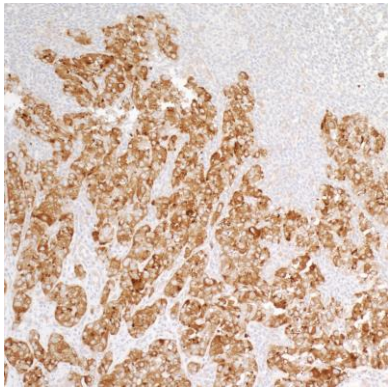
**Detection of mouse PTPN12 by western blot.** *Samples:* Whole cell lysate (50 µg) from NIH 3T3 cells prepared using NETN lysis buffer. *Antibody:* Rabbit anti-PTPN12 recombinant monoclonal antibody [BL-5-2F8] (A700-007 lot 1) used at 1:1000. *Secondary:* HRP-conjugated goat anti-rabbit IgG (A120-101P). Chemiluminescence with an exposure time of 30 seconds.



**Detection of human PTPN12 by western blot of immunoprecipitates.** *Samples:* Whole cell lysate (0.5 mg per IP reaction; 20% of IP loaded) from HeLa cells prepared using NETN lysis buffer. *Antibodies:* Rabbit anti-PTPN12 recombinant monoclonal antibody [BL-5-2F8] (A700-007 lot 1) used for IP at 20 µl per reaction. PTPN12 was also immunoprecipitated by rabbit anti-PTPN12 antibody A301-299A. For blotting immunoprecipitated PTPN12, A700-007 was used at 1:1000. Chemiluminescence with an exposure time of 30 seconds.



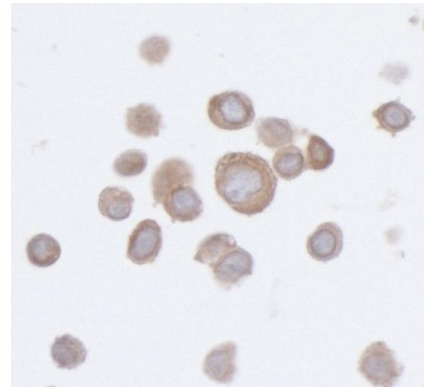
**Detection of human PTPN12 by immunohistochemistry.** *Sample:* FFPE section of mammary gland. *Antibody:* Rabbit anti-PTPN12 recombinant monoclonal antibody [BL-5-2F8] (A700-007 lot 1) used at 1:100. *Secondary:* HRP-conjugated goat anti-rabbit IgG (A120-101P). *Substrate:* DAB.

**Detection of human PTPN12 by immunohistochemistry.**

*Sample:* FFPE section of non-small cell lung cancer.

*Antibody:* Rabbit anti-PTPN12 recombinant monoclonal antibody [BL-5-2F8] (A700-007 lot 1) used at 1:100.

*Secondary:* HRP-conjugated goat anti-rabbit IgG (A120-101P). *Substrate:* DAB.

**Detection of human PTPN12 by immunocytochemistry.**

*Sample:* FFPE section of SW620 cells. *Antibody:* Rabbit anti-PTPN12 recombinant monoclonal antibody [BL-5-2F8] (A700-007 lot 1) used at 1:40. *Secondary:* HRP-conjugated goat anti-rabbit IgG (A120-101P). *Substrate:* DAB.