

Phospho RPA32 (S4/S8) Recombinant Monoclonal Antibody [BL-165-5F1]

Rabbit Recombinant Monoclonal

Purified Protein ID NP_002937.1
Catalog No. A700-009 GeneID 6118
Lot No. A700-009-1



APPLICATIONS	WB, IP, ICC-IF
SPECIES REACTIVITY	Human
AMOUNT	100 µl (10 blots)
CONCENTRATION	1000 µg/ml
STORAGE/SHELF LIFE	2 – 8° C / 1 year from date of receipt
PHYSICAL STATE	Liquid
BUFFER	Borate Buffered Saline (BBS) pH 8.2 with 0.09% Sodium Azide, BSA Free
ISOTYPE	IgG
CLONE #	BL-165-5F1
ORIGIN	USA
PRODUCTION PROCEDURES	Recombinant antibody was purified from cell culture supernatant.

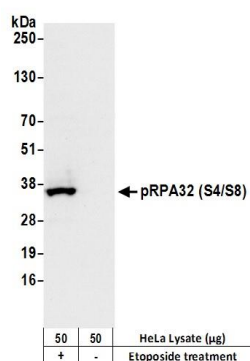
Immunogen was a dually phosphorylated synthetic peptide, which represented a portion of human replication protein A2, 32 kDa surrounding phosphorylated serines that corresponded to positions 4 and 8 using the numbering given in entry NP_002937.1 (GeneID 6118).

APPLICATIONS Centrifuge tube to remove product from lid. Optimal working dilutions should be determined experimentally by the investigator. Prepare working dilution immediately before use.

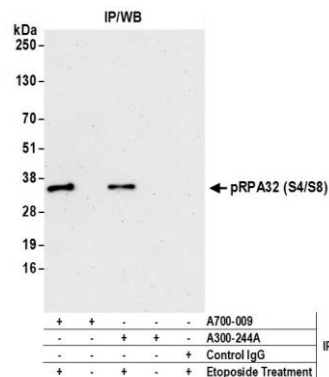
Western Blot	1:1000
Immunoprecipitation	5 µl/0.5 mg lysate
Immunofluorescence (ICC)	1:5000.

ADDITIONAL INFO <https://www.bethyl.com/product/A700-009>
Use the link above to view SDS, a current list of citations, and other product specific information.

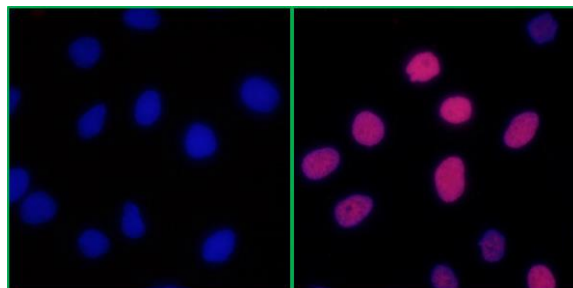
This document certifies that this product has met all of the quality control standards defined by Bethyl Laboratories, Inc.
Eric McIntush, PhD | Chief Scientific Officer Date: January 24, 2020



Detection of human Phospho RPA32 (S4/S8) by western blot. *Samples:* Whole cell lysate (50 µg) from HeLa cells treated with 100 µM etoposide for 4 hours (+) or mock treated (-). *Antibodies:* Rabbit anti-Phospho RPA32 (S4/S8) recombinant monoclonal antibody [BL-165-5F1] (A700-009 lot 1) used at 1:1000. *Secondary:* HRP-conjugated goat anti-rabbit IgG (A120-101P). Chemiluminescence with an exposure time of 10 seconds.



Detection of human Phospho RPA32 (S4/S8) by western blot of immunoprecipitates. *Samples:* Whole cell lysate (0.5 or 1.0 mg per IP reaction; 20% of IP loaded) from HeLa cells treated with 100 µM etoposide for 4 hours (+) or mock treated (-). *Antibodies:* Rabbit anti-Phospho RPA32 (S4/S8) recombinant monoclonal antibody [BL-165-5F1] (A700-009 lot 1) used for IP at 5 µl per reaction. Phospho RPA32 (S4/S8) was also immunoprecipitated by rabbit anti-RPA32 polyclonal antibody (A300-244A). For blotting immunoprecipitated Phospho RPA32 (S4/S8), A700-009 was used at 1:1000. Chemiluminescence with an exposure time of 3 minutes.



Detection of Human Phospho RPA32 (S4/S8) by Immunocytochemistry. *Samples:* NBF-fixed HeLa cells treated with etoposide (right) or mock treated (left). *Antibody:* Rabbit anti-Phospho RPA32 (S4/S8) recombinant monoclonal antibody [BL-165-5F1] (A700-009 lot 1) used at 1:5,000. *Detection:* DyLight® 594-conjugated goat anti-rabbit IgG (A120-101D4). *Counterstain:* DAPI (blue).