

Phospho RPA32 (S4/S8) Recombinant Monoclonal Antibody [BL-165-5F1]

Rabbit Recombinant Monoclonal

Purified		RefSeq ID	NP_002937.1
Catalog No.	A700-009-T	Uniprot ID	P15927
Lot No.	A700-009-T-3	GeneID	6118

APPLICATIONS	WB, IP, ICC, ICC-IF, Flow Cyt
SPECIES REACTIVITY	Human
AMOUNT	20 µl (2 blots)
CONCENTRATION	1000 µg/ml
STORAGE/SHELF LIFE	2 - 8°C / 1 year from date of receipt
PHYSICAL STATE	Liquid
BUFFER	Borate Buffered Saline (BBS) pH 8.2 with 0.09% Sodium Azide, BSA-Free
ISOTYPE	IgG
CLONE #	BL-165-5F1
ORIGIN	USA
PRODUCTION PROCEDURES	Recombinant antibody was purified from cell culture supernatant.

Immunogen was a dually phosphorylated synthetic peptide, which represented a portion of human replication protein A2, 32 kDa surrounding phosphorylated serines that corresponded to positions 4 and 8 using the numbering given in entry NP_002937.1 (GeneID 6118).

APPLICATIONS Centrifuge tube to remove product from lid. Optimal working dilutions should be determined experimentally by the investigator. Prepare working dilution immediately before use.

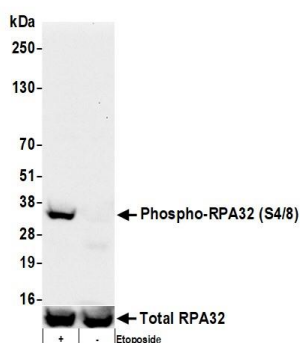
Western Blot	1:1000
Immunoprecipitation	6 µl/1.0 mg lysate
Immunocytochemistry	1:100 to 1:500. Epitope retrieval with citrate buffer pH 6.0 is recommended for FFPE cell sections.
Immunofluorescence (ICC)	1:1,000 - 1:5,000. Formaldehyde fixation is recommended. Permeabilization with Triton-X 100 is recommended for formaldehyde-fixed cells.
Flow Cytometry	Fixed in 4% formaldehyde and permeabilized with 90% methanol. 0.5 ul per 1 x 10 ⁶ cells.

IHC HUMAN CONTROLS HeLa Cells

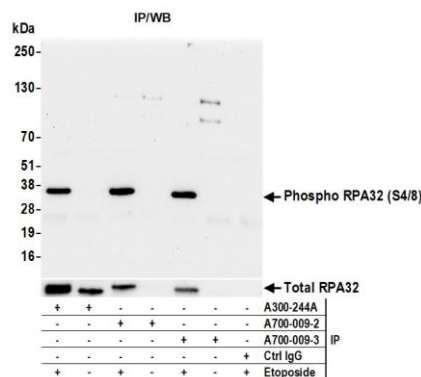
ADDITIONAL INFO <https://www.fortislife.com/p/A700-009-T>

Use the link above to view SDS, a current list of citations, and other product specific information.

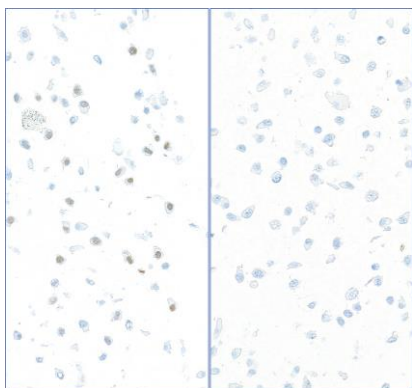
This document certifies that this product has met all of the quality control standards defined by Bethyl Laboratories, Inc.
Michael Spencer, PhD Date: February 23, 2023



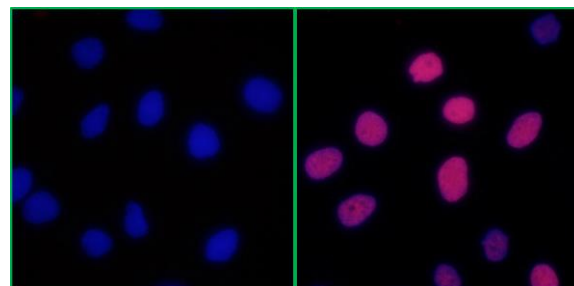
Detection of human Phospho-RPA32 (S4/8) by western blot. *Samples:* Whole cell lysate (50 µg) from HeLa cells prepared using NETN lysis buffer. *Antibody:* Rabbit anti-Phospho-RPA32 (S4/8) recombinant monoclonal antibody [BL-165-5F1] (A700-009 lot 3) used at 1:1000. *Secondary:* HRP-conjugated goat anti-rabbit IgG (A120-101P). Chemiluminescence with an exposure time of 10 seconds. Lower Panel: Rabbit anti-Actin antibody (A300-491A).



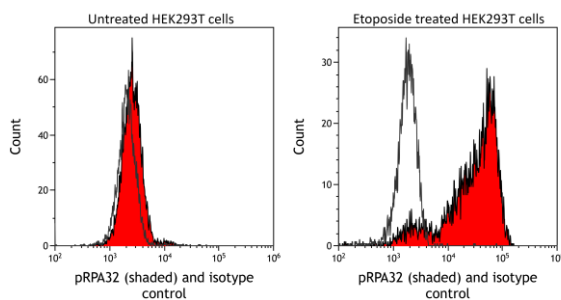
Detection of human Phospho RPA32 (S4/8) by western blot of immunoprecipitates. *Samples:* Whole cell lysate (1.0 mg per IP reaction; 20% of IP loaded) from HeLa cells prepared using NETN lysis buffer. *Antibodies:* Rabbit anti-Phospho RPA32 (S4/8) recombinant monoclonal antibody [BL-165-5F1] (A700-009 lot 3) used for IP at 6 µl/mg lysate. Phospho RPA32 (S4/8) was also immunoprecipitated by a previous lot of this antibody (A700-009 lot 2) and by rabbit anti-RPA32 antibody (A300-244A). For blotting immunoprecipitated Phospho RPA32 (S4/8), A700-009 was used at 1:1000. Chemiluminescence with an exposure time of 1 second. Lower Panel: Total RPA32 detected by rabbit anti-RPA32 (A300-244A).



Detection of human Phospho-RPA32 (S4/8) in FFPE etoposide-treated HeLa cells, mock CIP (left) and CIP (right). *Antibody:* Rabbit anti-phospho RPA32 (S4/S8) [BL-165-5F1] (A700-009). *Secondary:* HRP-conjugated goat anti-rabbit IgG (A120-501P). *Substrate:* DAB.



Detection of Human Phospho RPA32 (S4/S8) by Immunocytochemistry. *Samples:* NBF-fixed HeLa cells treated with etoposide (right) or mock treated (left). *Antibody:* Rabbit anti-Phospho RPA32 (S4/S8) recombinant monoclonal antibody [BL-165-5F1] (A700-009 lot 1) used at 1:5,000. *Detection:* DyLight® 594-conjugated goat anti-rabbit IgG (A120-101D4). *Counterstain:* DAPI (blue).



Detection of human phospho RPA32 (shaded) in etoposide treated HEK293T cells (right) and untreated HEK293T cells (left) by flow cytometry. *Antibody:* Rabbit anti-phospho RPA32 recombinant monoclonal [BL-165-5F1] (A700-009) or isotype control (unshaded). *Secondary:* DyLight® 488-conjugated goat anti-rabbit IgG (A120-101D2).