

# MLL1 Recombinant Monoclonal Antibody [BL-175-7E8]

Rabbit Recombinant Monoclonal

Purified Protein ID Q03164  
Catalog No. A700-010-T GenelD 4297  
Lot No. A700-010-T-2

---

**APPLICATIONS** WB, IP  
**SPECIES REACTIVITY** Human  
**AMOUNT** 20 µl (2 blots)  
**CONCENTRATION** 1000 µg/ml  
**STORAGE/SHELF LIFE** 2 – 8°C / 1 year from date of receipt  
**PHYSICAL STATE** Liquid  
**BUFFER** Borate Buffered Saline (BBS) pH 8.2 with 0.09% Sodium Azide, BSA Free  
**ISOTYPE** IgG  
**CLONE #** BL-175-7E8  
**ORIGIN** USA  
**PRODUCTION PROCEDURES** Recombinant antibody was purified from cell culture supernatant.

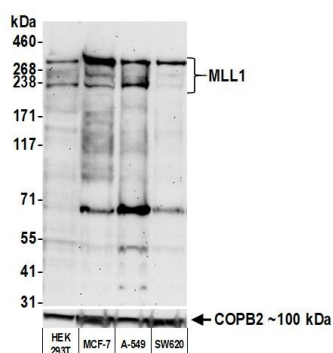
The epitope recognized by A700-010-T maps to a region between residues 720 and 780 of human myeloid/lymphoid or mixed-lineage leukemia 1 using the number given in Swiss-Prot entry Q03164 (GeneID 4297). The epitope is found in the N-terminal 300 kDa fragment generated by proteolytic cleavage. The epitope is found in isoform 14P-18B of MLL1.

**APPLICATIONS** Centrifuge tube to remove product from lid. Optimal working dilutions should be determined experimentally by the investigator. Prepare working dilution immediately before use.

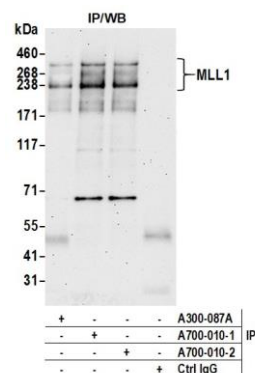
Western Blot 1:1000  
Immunoprecipitation 20 µl/mg lysate

**ADDITIONAL INFO** <https://www.fortislife.com/p/A700-010-T>  
Use the link above to view SDS, a current list of citations, and other product specific information.

This document certifies that this product has met all of the quality control standards defined by Bethyl Laboratories, Inc.  
Michael Spencer, PhD Date: August 5, 2022



**Detection of human MLL1 by western blot. Samples:** Whole cell lysate (50 µg) from HEK293T, MCF-7, A-549, and SW620 cells prepared using NETN lysis buffer. **Antibody:** Rabbit anti-MLL1 recombinant monoclonal antibody [BL-175-7E8] (A700-010-T lot 2) used at 1:1000. **Secondary:** HRP-conjugated goat anti-rabbit IgG (A120-101P). Chemiluminescence with an exposure time of 75 seconds. Lower Panel: Rabbit anti-COPB2 antibody (A304-523A).



**Detection of human MLL1 by western blot of immunoprecipitates. Samples:** Whole cell lysate (1.0 mg per IP reaction; 20% of IP loaded) from HEK293T cells prepared using NETN lysis buffer. **Antibodies:** Rabbit anti-MLL1 recombinant monoclonal antibody [BL-175-7E8] (A700-010-T lot 2) used for IP at 6 µl/mg lysate. MLL1 was also immunoprecipitated by a previous lot of this antibody (A700-010-T-1) and another antibody against a different epitope of MLL1 (A300-087A). For blotting immunoprecipitated MLL1, A700-010-T was used at 1:1000. Chemiluminescence with an exposure time of 75 seconds.