

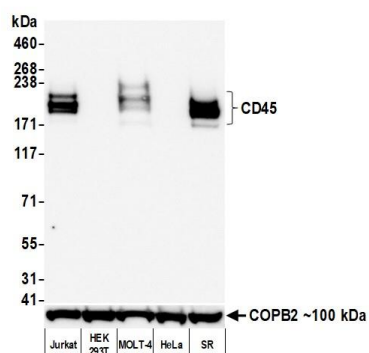
CD45 Recombinant Monoclonal Antibody [BL-178-12C7]

Rabbit Recombinant Monoclonal

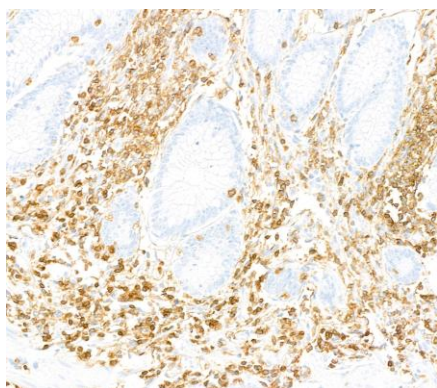
Purified		RefSeq ID	NP_002829.3
Catalog No.	A700-012-T	Uniprot ID	P08575
Lot No.	3	GeneID	5788

APPLICATIONS	WB, IP, IHC, ICC, IHC-IF, Flow Cyt												
SPECIES REACTIVITY	Human												
AMOUNT	10 µl (5+ tests)												
CONCENTRATION	50 µg/ml												
STORAGE/SHELF LIFE	2 – 8°C / 1 year from date of receipt												
PHYSICAL STATE	Liquid												
BUFFER	Borate Buffered Saline (BBS) pH 8.2 with 0.1% BSA and 0.09% Sodium Azide												
ISOTYPE	IgG												
CLONE #	BL-178-12C7												
ORIGIN	USA												
PRODUCTION PROCEDURES	<p>Recombinant antibody was purified from cell culture supernatant.</p> <p>Immunogen was a synthetic peptide representing a region between residue 1250 to 1306 (C-terminus) of human CD45 Molecule according to the numbering given in entry NP_002829.3 (GeneID 5788).</p>												
APPLICATIONS	<p>Centrifuge tube to remove product from lid. Optimal working dilutions should be determined experimentally by the investigator. Prepare working dilution immediately before use.</p> <table><tr><td>Western Blot</td><td>1:1000</td></tr><tr><td>Immunoprecipitation</td><td>20 µl/mg lysate</td></tr><tr><td>Immunohistochemistry</td><td>1:100 – 1:500. Epitope retrieval with citrate buffer pH 6.0 is recommended for FFPE tissue sections.</td></tr><tr><td>Immunocytochemistry</td><td>1:100 – 1:500. Epitope retrieval with citrate buffer pH6.0 is recommended for FFPE cell sections.</td></tr><tr><td>Immunofluorescence (IHC)</td><td>1:100 to 1:500. Epitope retrieval with citrate buffer pH6.0 is recommended for FFPE cell sections.</td></tr><tr><td>Flow Cytometry</td><td>1 µl per 1 X 10⁶ cells</td></tr></table>	Western Blot	1:1000	Immunoprecipitation	20 µl/mg lysate	Immunohistochemistry	1:100 – 1:500. Epitope retrieval with citrate buffer pH 6.0 is recommended for FFPE tissue sections.	Immunocytochemistry	1:100 – 1:500. Epitope retrieval with citrate buffer pH6.0 is recommended for FFPE cell sections.	Immunofluorescence (IHC)	1:100 to 1:500. Epitope retrieval with citrate buffer pH6.0 is recommended for FFPE cell sections.	Flow Cytometry	1 µl per 1 X 10 ⁶ cells
Western Blot	1:1000												
Immunoprecipitation	20 µl/mg lysate												
Immunohistochemistry	1:100 – 1:500. Epitope retrieval with citrate buffer pH 6.0 is recommended for FFPE tissue sections.												
Immunocytochemistry	1:100 – 1:500. Epitope retrieval with citrate buffer pH6.0 is recommended for FFPE cell sections.												
Immunofluorescence (IHC)	1:100 to 1:500. Epitope retrieval with citrate buffer pH6.0 is recommended for FFPE cell sections.												
Flow Cytometry	1 µl per 1 X 10 ⁶ cells												
IHC HUMAN CONTROLS	Appendix, Breast Carcinoma, Colon Carcinoma, Intestine, Tonsil, Daudi Cells, Jurkat Cells, Ramos Cells												
ADDITIONAL INFO	<p>https://www.fortislife.com/p/A700-012-T</p> <p>Use the link above to view SDS, a current list of citations, and other product specific information.</p>												

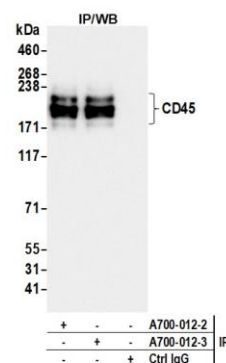
This document certifies that this product has met all of the quality control standards defined by Bethyl Laboratories, Inc.
Michael Spencer, PhD Date: April 17, 2023



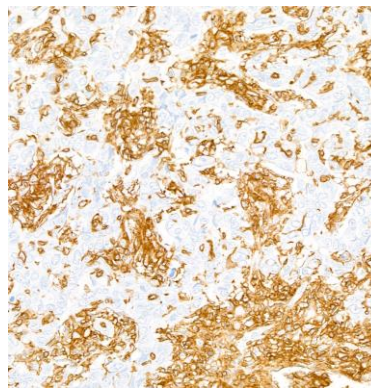
Detection of human CD45 by western blot. *Samples:* Whole cell lysate (50 µg) from Jurkat, HEK293T, MOLT-4, HeLa, and SR cells prepared using NETN lysis buffer. *Antibody:* Rabbit anti-CD45 recombinant monoclonal antibody [BL-178-12C7] (A700-012 lot 3) used at 1:1000. *Secondary:* HRP-conjugated goat anti-rabbit IgG (A120-101P). Chemiluminescence with an exposure time of 3 seconds. Lower Panel: Rabbit anti-COPB2 antibody (A304-523A).



Detection of human CD45 by immunohistochemistry. *Sample:* FFPE section of appendix. *Antibody:* Rabbit anti-CD45 recombinant monoclonal antibody [BL-178-12C7] (A700-012). *Secondary:* HRP-conjugated goat anti-rabbit IgG (A120-501P).



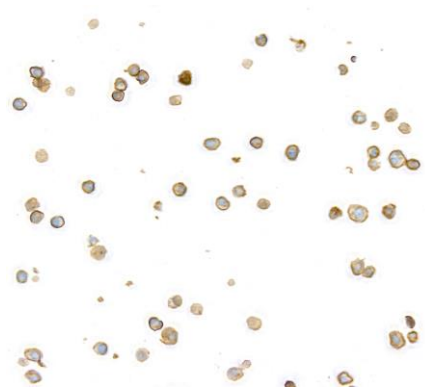
Detection of human CD45 by western blot of immunoprecipitates. *Samples:* Whole cell lysate (1.0 mg per IP reaction; 20% of IP loaded) from Jurkat cells prepared using NETN lysis buffer. *Antibodies:* Rabbit anti-CD45 recombinant monoclonal antibody [BL-178-12C7] (A700-012 lot 3) used for IP at 20 µl/mg lysate. CD45 was also immunoprecipitated by a previous lot of this antibody (A700-012 lot 2). For blotting immunoprecipitated CD45, A700-012 was used at 1:1000. Chemiluminescence with an exposure time of 1 second.



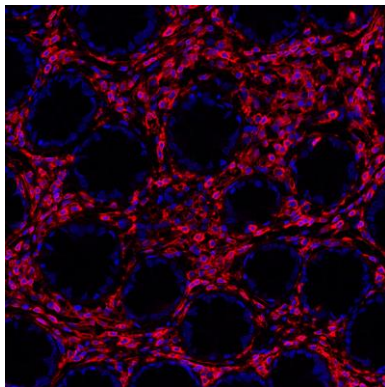
Detection of human CD45 by immunohistochemistry. *Sample:* FFPE section of breast carcinoma. *Antibody:* Rabbit anti-CD45 recombinant monoclonal antibody [BL-178-12C7] (A700-012). *Secondary:* HRP-conjugated goat anti-rabbit IgG (A120-501P).

**Detection of human CD45 by immunocytochemistry.**

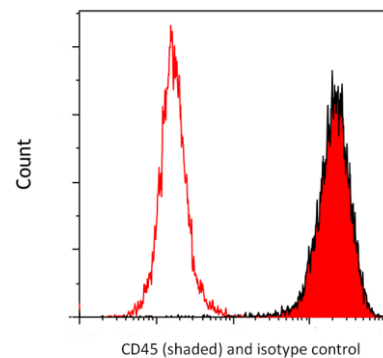
Sample: FFPE section of Jurkat cells. *Antibody:* Rabbit anti-CD45 recombinant monoclonal antibody [BL-178-12C7] (A700-012). *Secondary:* HRP-conjugated goat anti-rabbit IgG (A120-501P).

**Detection of human CD45 by immunocytochemistry.**

Sample: FFPE section of Daudi cells. *Antibody:* Rabbit anti-CD45 recombinant monoclonal antibody [BL-178-12C7] (A700-012). *Secondary:* HRP-conjugated goat anti-rabbit IgG (A120-501P).



Detection of human CD45 (red) by immunohistochemistry. *Sample:* FFPE section of human colon carcinoma. *Antibody:* Rabbit anti-CD45 recombinant monoclonal antibody [BL-178-12C7] (A700-012-T lot 1) used at 1:250. *Secondary:* HRP-conjugated goat anti-rabbit IgG (A120-501P). *Substrate:* Opal™. *Counterstain:* DAPI (blue).



Detection of human CD45 by flow cytometry. *Sample:* Jurkat cells were fixed in 4% formaldehyde and permeabilized with 90% methanol. *Antibody:* 1E6 cells were incubated with 1 ul of rabbit anti-CD45 recombinant monoclonal antibody [BL-178-12C7] (A700-012-T lot 1) (red shaded) or isotype control (unshaded). *Secondary:* DyLight® 650-conjugated goat anti-rabbit IgG (A120-201D5).