

KAP-1 Recombinant Monoclonal Antibody [BL-248-2G6]

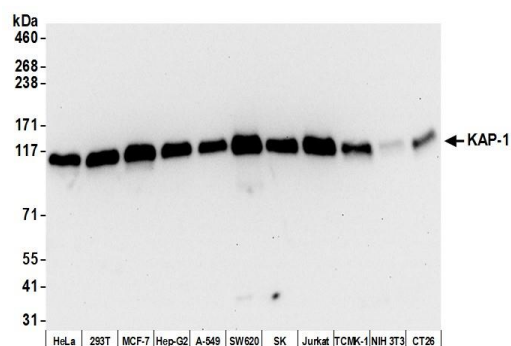
Rabbit Recombinant Monoclonal

Purified Protein ID NP_005753.1
Catalog No. A700-014 GeneID 10155
Lot No. A700-014-1

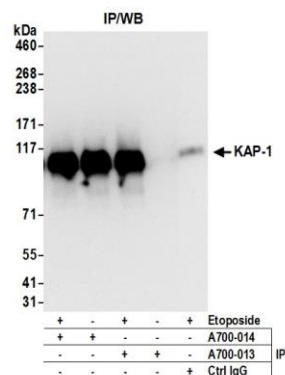


APPLICATIONS	WB, IP, IHC, ICC, F
SPECIES REACTIVITY	Human, Mouse
AMOUNT	100 µl (10 blots)
CONCENTRATION	40 µg/ml
STORAGE/SHELF LIFE	2 – 8° C / 1 year from date of receipt
PHYSICAL STATE	Liquid
BUFFER	Borate Buffered Saline (BBS) pH 8.2 with 0.1% BSA and 0.09% Sodium Azide
ISOTYPE	IgG
CLONE #	BL-248-2G6
ORIGIN	USA
PRODUCTION PROCEDURES	Recombinant antibody was purified from cell culture supernatant. Immunogen was a synthetic peptide representing a portion of human KRAB-Associated Protein 1 surrounding Serine 824 according to the numbering given in entry NP_005753.1 (GeneID 10155).
APPLICATIONS	Centrifuge tube to remove product from lid. Optimal working dilutions should be determined experimentally by the investigator. Prepare working dilution immediately before use. Western Blot 1:1000 Immunoprecipitation 20 µl/mg lysate Immunohistochemistry 1:100 – 1:500. Epitope retrieval with citrate buffer pH 6.0 is recommended for FFPE tissue sections. Immunocytochemistry 1:100 – 1:500. Epitope retrieval with citrate buffer pH6.0 is recommended for FFPE cell sections. Flow Cytometry 1 µl per 1 X 10 ⁶ cells
IHC HUMAN CONTROLS	Breast Carcinoma, Ovarian Carcinoma, Seminoma, HeLa Cells
ADDITIONAL INFO	https://www.bethyl.com/product/A700-014 Use the link above to view SDS, a current list of citations, and other product specific information.

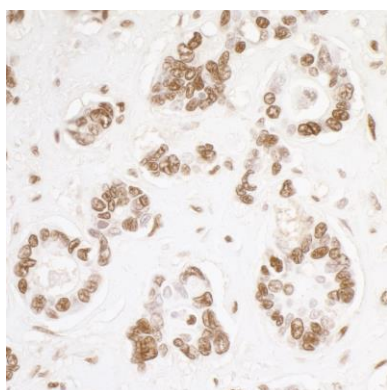
This document certifies that this product has met all of the quality control standards defined by Bethyl Laboratories, Inc.
Eric McIntush, PhD | Chief Scientific Officer Date: August 15, 2019



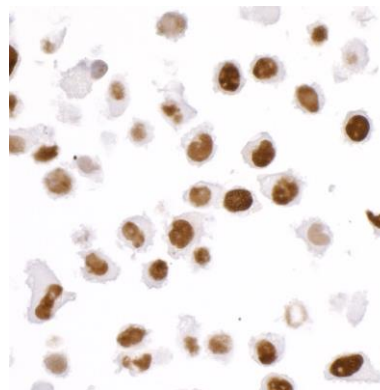
Detection of human and mouse KAP-1 by western blot.
Samples: Whole cell lysate (15 µg) from HeLa, HEK293T, MCF-7, Hep-G2, A-549, SW620, SK-MEL-28 (SK), Jurkat, TCMK-1, NIH 3T3, and CT26 cells prepared using NETN lysis buffer. *Antibody:* Rabbit anti-KAP-1 recombinant monoclonal antibody [BL-248-2G6] (A700-014 lot 1) used at 1:1000. *Secondary:* HRP-conjugated goat anti-rabbit IgG (A120-101P). Chemiluminescence with an exposure time of 10 seconds.



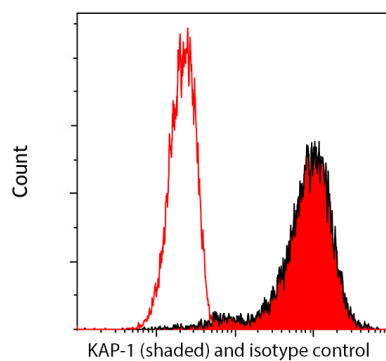
Detection of human KAP-1 by western blot of immunoprecipitates.
Samples: Whole cell lysate (1 mg for IP; 20% of IP loaded) from HEK293T cells that were treated with 100 µM etoposide (+) or mock treated (-). *Antibodies:* Rabbit anti-KAP-1 recombinant monoclonal antibody [BL-248-2G6] (A700-014 lot 1) used for IP at 20 µl per reaction. KAP-1 was also immunoprecipitated by rabbit anti-Phospho KAP-1 (S824) recombinant monoclonal antibody [BL-246-7B5] (A700-013). For blotting immunoprecipitated KAP-1, A700-014 was used at 1:1000. Chemiluminescence with an exposure time of 3 seconds.



Detection of human KAP-1 by immunohistochemistry.
Sample: FFPE section of human ovarian carcinoma. *Antibody:* Rabbit anti-KAP-1 recombinant monoclonal antibody [BL-248-2G6] (A700-014 lot 1) used at 1:100. *Secondary:* HRP-conjugated goat anti-rabbit IgG (A120-101P). *Substrate:* DAB.



Detection of human KAP-1 by immunocytochemistry.
Sample: FFPE section of HeLa cells. *Antibody:* Rabbit anti-KAP-1 recombinant monoclonal antibody [BL-248-2G6] (A700-014 lot 1) used at 1:100. *Secondary:* HRP-conjugated goat anti-rabbit IgG (A120-101P). *Substrate:* DAB.



Detection of human KAP-1 by flow cytometry. *Sample:* Jurkat cells were fixed in 4% formaldehyde and permeabilized with 90% methanol. *Antibody:* 1E6 cells were incubated with 1 ul of rabbit anti-KAP-1 recombinant monoclonal antibody [BL-248-2G6] (A700-014 lot 1) (red shaded) or isotype control (unshaded). *Secondary:* DyLight® 650-conjugated goat anti-rabbit IgG (A120-201D5).