

KAP-1 Recombinant Monoclonal Antibody [BL-248-2G6]

Rabbit Recombinant Monoclonal

Purified Protein ID NP_005753.1
Catalog No. A700-014-T GeneID 10155
Lot No. A700-014-T-2



APPLICATIONS WB, IP, IHC, ICC, F
SPECIES REACTIVITY Human, Mouse
AMOUNT 20 µl (2 blots)
CONCENTRATION 40 µg/ml
STORAGE/SHELF LIFE 2 – 8° C / 1 year from date of receipt
PHYSICAL STATE Liquid
BUFFER Borate Buffered Saline (BBS) pH 8.2 with 0.1% BSA and 0.09% Sodium Azide
ISOTYPE IgG
CLONE # BL-248-2G6
ORIGIN USA
PRODUCTION PROCEDURES Recombinant antibody was purified from cell culture supernatant.

Immunogen was a synthetic peptide representing a portion of human KRAB-Associated Protein 1 surrounding Serine 824 according to the numbering given in entry NP_005753.1 (GeneID 10155).

APPLICATIONS Centrifuge tube to remove product from lid. Optimal working dilutions should be determined experimentally by the investigator. Prepare working dilution immediately before use.

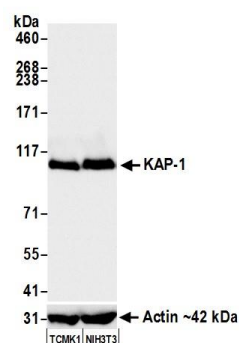
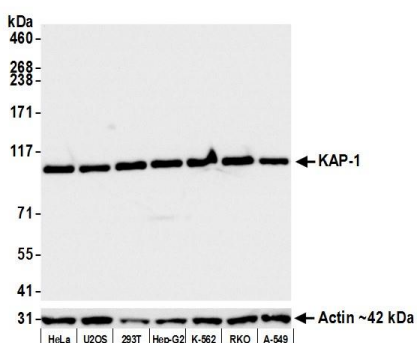
Western Blot 1:1000
Immunoprecipitation 20 µl/mg lysate
Immunohistochemistry 1:100 – 1:500. Epitope retrieval with citrate buffer pH 6.0 is recommended for FFPE tissue sections.
Immunocytochemistry 1:100 – 1:500. Epitope retrieval with citrate buffer pH6.0 is recommended for FFPE cell sections.
Flow Cytometry 1 µl per 1 X 10⁶ cells

IHC HUMAN CONTROLS Breast Carcinoma, Lung Carcinoma, Ovarian Carcinoma, Prostate Carcinoma, Seminoma, HeLa Cells, Hep-G2 Cells, SK-MEL-28 Cells, SW620 Cells

ADDITIONAL INFO <https://www.bethyl.com/product/A700-014-T>

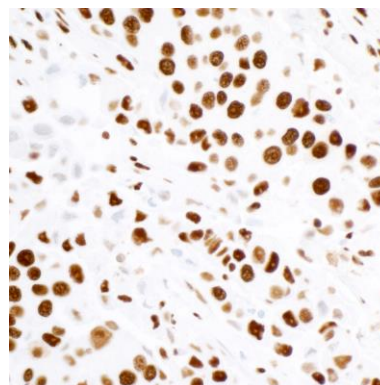
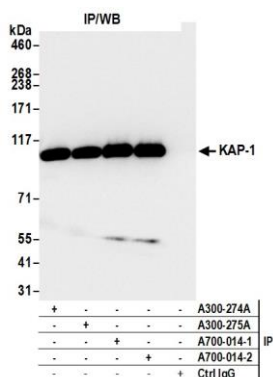
Use the link above to view SDS, a current list of citations, and other product specific information.

This document certifies that this product has met all of the quality control standards defined by Bethyl Laboratories, Inc.
Eric McIntush, PhD | Chief Scientific Officer Date: July 28, 2020



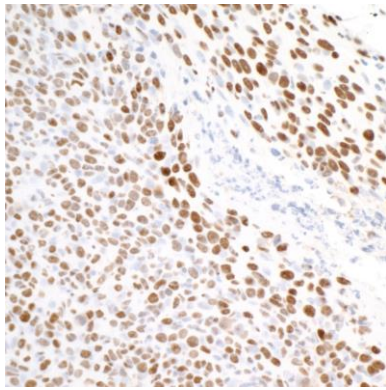
Detection of human KAP-1 by western blot. *Samples:* Whole cell lysate (15 µg) from HeLa, U2OS, HEK293T, Hep-G2, K-562, RKO, and A-549 cells prepared using NETN lysis buffer. *Antibody:* Rabbit anti-KAP-1 recombinant monoclonal antibody [BL-248-2G6] (A700-014-T lot 2) used at 1:1000. *Secondary:* HRP-conjugated goat anti-rabbit IgG (A120-101P). Chemiluminescence with an exposure time of 1 second. Lower Panel: Rabbit anti-Cytoskeletal Actin recombinant monoclonal antibody [BLR057F] (A700-057).

Detection of mouse KAP-1 by western blot. *Samples:* Whole cell lysate (50 µg) from TCMK-1 and NIH 3T3 cells prepared using NETN lysis buffer. *Antibody:* Rabbit anti-KAP-1 recombinant monoclonal antibody [BL-248-2G6] (A700-014-T lot 2) used at 1:1000. *Secondary:* HRP-conjugated goat anti-rabbit IgG (A120-101P). Chemiluminescence with an exposure time of 1 second. Lower Panel: Rabbit anti-Cytoskeletal Actin recombinant monoclonal antibody [BLR057F] (A700-057).

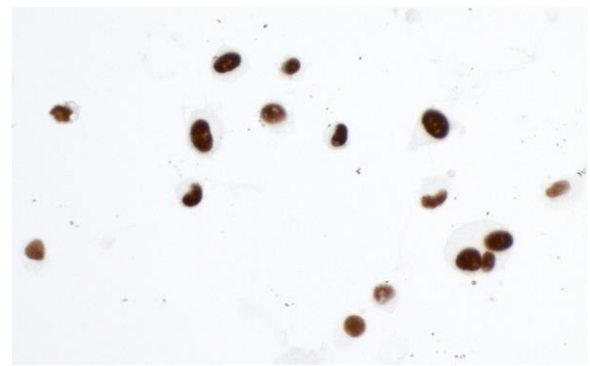


Detection of human KAP-1 by western blot of immunoprecipitates. *Samples:* Whole cell lysate (1 mg for IP; 20% of IP loaded) from HeLa cells. *Antibodies:* Rabbit anti-KAP-1 recombinant monoclonal antibody [BL-248-2G6] (A700-014-T lot 2) used for IP at 20 µl per reaction. KAP-1 was also immunoprecipitated by a previous lot of this antibody (lot A700-014-1) and rabbit anti-KAP-1 antibodies (A300-274A, A300-275A). For blotting immunoprecipitated KAP-1, A700-014-T was used at 1:1000. Chemiluminescence with an exposure time of 1 second.

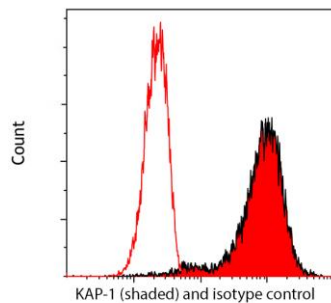
Detection of human KAP-1 in FFPE breast carcinoma by IHC. *Antibody:* Rabbit anti-KAP-1 recombinant monoclonal antibody [BL-248-2G6] (A700-014-T lot 2). *Secondary:* HRP-conjugated goat anti-rabbit IgG (A120-501P). *Substrate:* DAB.



Detection of mouse KAP-1 in FFPE colon carcinoma CT26 by IHC. *Antibody:* Rabbit anti-KAP-1 recombinant monoclonal antibody [BL-248-2G6] (A700-014-T lot 2). *Secondary:* HRP-conjugated goat anti-rabbit IgG (A120-501P). *Substrate:* DAB.



Detection of human KAP-1 in FFPE SK-MEL-28 cells by ICC. *Antibody:* Rabbit anti-KAP-1 recombinant monoclonal antibody [BL-248-2G6] (A700-014-T lot 2). *Secondary:* HRP-conjugated goat anti-rabbit IgG (A120-501P). *Substrate:* DAB.



Detection of human KAP-1 by flow cytometry. *Sample:* Jurkat cells were fixed in 4% formaldehyde and permeabilized with 90% methanol. *Antibody:* 1E6 cells were incubated with 1 ul of rabbit anti-KAP-1 recombinant monoclonal antibody [BL-248-2G6] (A700-014-T lot 1) (red shaded) or isotype control (unshaded). *Secondary:* DyLight® 650-conjugated goat anti-rabbit IgG (A120-201D5).