

SMC1 Recombinant Monoclonal Antibody [BL-205-2G8]

Rabbit Recombinant Monoclonal

Purified Protein ID NP_006297.2
Catalog No. A700-018 GeneID 8243
Lot No. A700-018-2



APPLICATIONS WB, IP, IHC, ICC, IHC-IF, F
SPECIES REACTIVITY Human, Mouse
PRESUMED REACTIVITY Based on 100% sequence identity, this antibody is predicted to react with Rat and Bovine
AMOUNT 100 µl (10 blots)
CONCENTRATION 50 µg/ml
STORAGE/SHELF LIFE 2 - 8° C / 1 year from date of receipt
PHYSICAL STATE Liquid
BUFFER Borate Buffered Saline (BBS) pH 8.2 with 0.1% BSA and 0.09% Sodium Azide
ISOTYPE IgG
CLONE # BL-205-2G8
ORIGIN USA

PRODUCTION PROCEDURES

Recombinant antibody was purified from cell culture supernatant.
Immunogen was a synthetic peptide representing a region between residue 1200 and the C-terminus (residue 1233) of human structural maintenance of chromosomes 1 according to the numbering given in entry NP_006297.2 (GeneID 8243).

APPLICATIONS

Centrifuge tube to remove product from lid. Optimal working dilutions should be determined experimentally by the investigator. Prepare working dilution immediately before use.

Western Blot	1:1000
Immunoprecipitation	20 µl/mg lysate
Immunohistochemistry	1:100 - 1:500. Epitope retrieval with citrate buffer pH 6.0 is recommended for FFPE tissue sections.
Immunocytochemistry	1:100 - 1:500. Epitope retrieval with citrate buffer pH6.0 is recommended for FFPE cell sections.
Immunofluorescence (IHC)	1:100 - 1:500. Epitope retrieval with citrate buffer pH 6.0 is recommended for FFPE tissue sections.
Flow Cytometry	Fixed in 4% formaldehyde and permeabilized with 90% methanol. 1 µl per 1 x 10 ⁶ cells.

IHC HUMAN CONTROLS

Breast Carcinoma, Colon Carcinoma, Skin Carcinoma, A-549 Cells, HCT 116 Cells, HeLa Cells, Jurkat Cells, MOLT-4 Cells

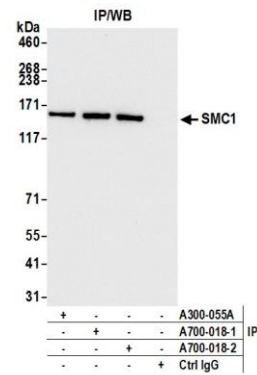
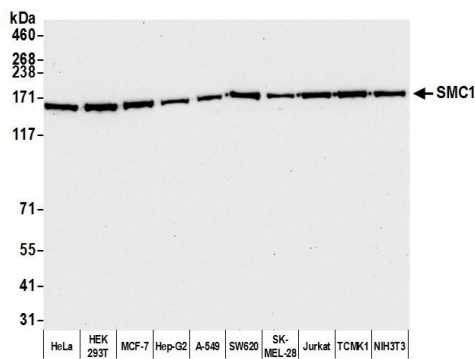
ADDITIONAL INFO

<https://www.bethyl.com/product/A700-018>

Use the link above to view SDS, a current list of citations, and other product specific information.

This document certifies that this product has met all of the quality control standards defined by Bethyl Laboratories, Inc.
Eric McIntush, PhD | Chief Scientific Officer

Date: August 17, 2020

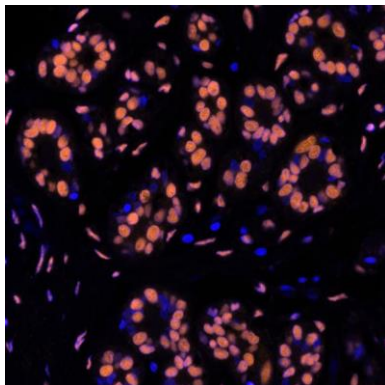


Detection of human and mouse SMC1 by western blot.

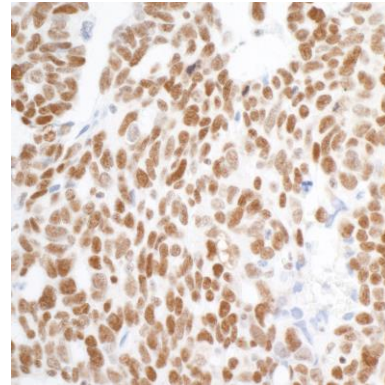
Samples: Whole cell lysate (50 µg) from HeLa, HEK293T, MCF-7, Hep-G2, A-549, SW620, SK-MEL-28, Jurkat, TCMK-1, and NIH 3T3 cells prepared using NETN lysis buffer. *Antibody:* Rabbit anti-SMC1 recombinant monoclonal antibody [BL-205-2G8] (A700-018 lot 2) used at 1:1000. *Secondary:* HRP-conjugated goat anti-rabbit IgG (A120-101P). Chemiluminescence with an exposure time of 10 seconds.

Detection of human SMC1 by western blot of immunoprecipitates.

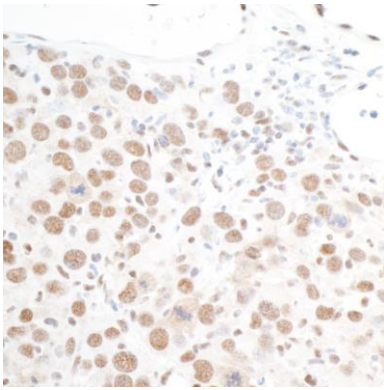
Samples: Whole cell lysate (1.0 mg per IP reaction; 20% of IP loaded) from HeLa cells prepared using NETN lysis buffer. *Antibodies:* Rabbit anti-SMC1 recombinant monoclonal antibody [BL-205-2G8] (A700-018 lot 2) used for IP at 20 µl/mg lysate. SMC1 was also immunoprecipitated by a previous lot of this antibody (lot A700-018-1) and rabbit anti-SMC1 antibody A300-055A. For blotting immunoprecipitated SMC1, A700-018 was used at 1:1000. Chemiluminescence with an exposure time of 3 seconds.



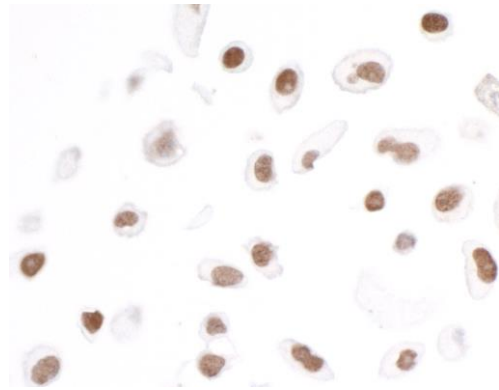
Detection of human SMC1 in FFPE breast carcinoma by immunohistochemistry-IF. *Antibody:* Rabbit anti-SMC1 recombinant monoclonal antibody [BL-205-2G8] (A700-018 Lot 1). *Secondary:* HRP-conjugated goat anti-rabbit IgG (A120-501P). *Substrate:* Opal™. Counterstain: DAPI.



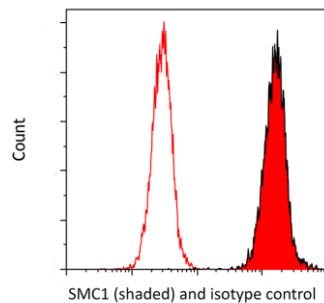
Detection of human SMC1 in FFPE ovarian carcinoma by IHC. *Antibody:* Rabbit anti-SMC1 recombinant monoclonal antibody [BL-205-2G8] (A700-018 lot 2). *Secondary:* HRP-conjugated goat anti-rabbit IgG (A120-101P). *Substrate:* DAB.



Detection of mouse SMC1 in FFPE renal cell carcinoma by IHC. *Antibody:* Rabbit anti-SMC1 recombinant monoclonal antibody [BL-205-2G8] (A700-018 lot 2). *Secondary:* HRP-conjugated goat anti-rabbit IgG (A120-101P). *Substrate:* DAB.



Detection of human SMC1 in FFPE NCI-H226 cells by ICC. *Antibody:* Rabbit anti-SMC1 recombinant monoclonal antibody [BL-205-2G8] (A700-018 lot 2). *Secondary:* HRP-conjugated goat anti-rabbit IgG (A120-101P). *Substrate:* DAB.



Detection of human SMC1 (shaded) in MOLT4 cells by flow cytometry. *Antibody:* Rabbit anti-SMC1 recombinant monoclonal [BL-205-2G8] (A700-018 lot 1) or isotype control (unshaded). *Secondary:* DyLight® 650-conjugated goat anti-rabbit IgG (A120-201D5).