

SMC1 Recombinant Monoclonal Antibody [BL-205-2G8]

Rabbit Recombinant Monoclonal

Purified		RefSeq ID	NP_006297.2
Catalog No.	A700-018	Uniprot ID	Q14683
Lot No.	A700-018-3	GeneID	8243

APPLICATIONS	WB, IP, IHC, ICC, IHC-IF, Flow Cyt
SPECIES REACTIVITY	Human, Mouse
PRESUMED REACTIVITY	Based on 100% sequence identity, this antibody is predicted to react with Rat and Bovine
AMOUNT	100 µl (10 blots)
CONCENTRATION	50 µg/ml
STORAGE/SHELF LIFE	2 - 8°C / 1 year from date of receipt
PHYSICAL STATE	Liquid
BUFFER	Borate Buffered Saline (BBS) pH 8.2 with 0.1% BSA and 0.09% Sodium Azide
ISOTYPE	IgG
CLONE #	BL-205-2G8
ORIGIN	USA

PRODUCTION PROCEDURES Recombinant antibody was purified from cell culture supernatant.
Immunogen was a synthetic peptide representing a region between residue 1200 and the C-terminus (residue 1233) of human structural maintenance of chromosomes 1 according to the numbering given in entry NP_006297.2 (GeneID 8243).

APPLICATIONS Centrifuge tube to remove product from lid. Optimal working dilutions should be determined experimentally by the investigator. Prepare working dilution immediately before use.

Western Blot	1:1000
Immunoprecipitation	20 µl/mg lysate
Immunohistochemistry	1:100 - 1:500. Epitope retrieval with citrate buffer pH 6.0 is recommended for FFPE tissue sections.
Immunocytochemistry	1:100 - 1:500. Epitope retrieval with citrate buffer pH6.0 is recommended for FFPE cell sections.
Immunofluorescence (IHC)	1:100 - 1:500. Epitope retrieval with citrate buffer pH 6.0 is recommended for FFPE tissue sections.
Flow Cytometry	Fixed in 4% formaldehyde and permeabilized with 90% methanol. 1 µl per 1 x 10 ⁶ cells.

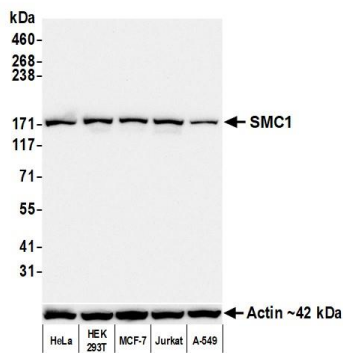
IHC HUMAN CONTROLS Breast Carcinoma, Colon Carcinoma, Lung Carcinoma, Melanoma, Ovarian Carcinoma, 22RV1 Cells, HCT 116 Cells, HEK293T Cells, HeLa Cells, NCI-H226 Cells

IHC MOUSE CONTROLS CT26 cells, RenCa Cells

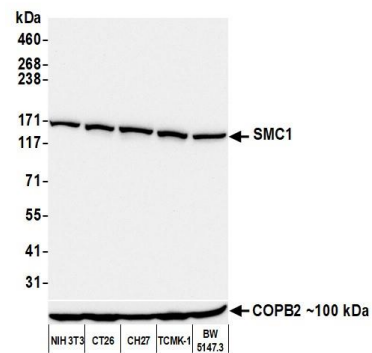
ADDITIONAL INFO <https://www.fortislifesciences.com/p/A700-018>

Use the link above to view SDS, a current list of citations, and other product specific information.

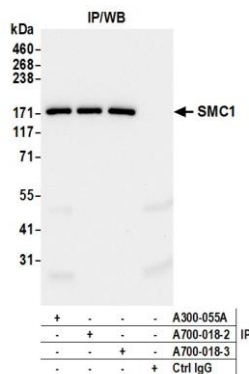
This document certifies that this product has met all of the quality control standards defined by Bethyl Laboratories, Inc.
Michael Spencer, PhD Date: February 28, 2023



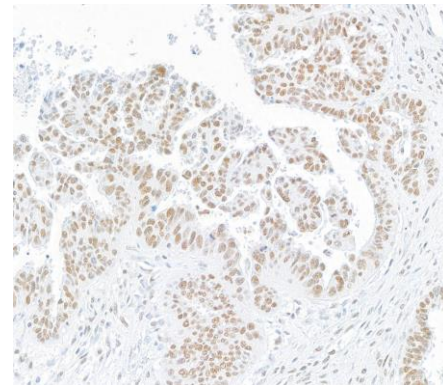
Detection of human SMC1 by western blot. *Samples:* Whole cell lysate (50 µg) from HeLa, HEK293T, MCF-7, Jurkat, and A-549 cells prepared using NETN lysis buffer. *Antibody:* Rabbit anti-SMC1 recombinant monoclonal antibody [BL-205-2G8] (A700-018 lot 3) used at 1:1000. *Secondary:* HRP-conjugated goat anti-rabbit IgG (A120-101P). Chemiluminescence with an exposure time of 10 seconds. Lower Panel: Rabbit anti-Actin recombinant monoclonal antibody [BLR057F] (A700-057).



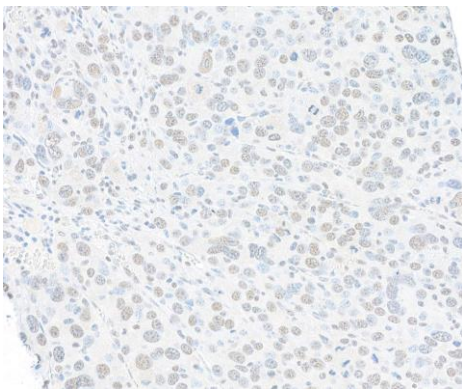
Detection of mouse SMC1 by western blot. *Samples:* Whole cell lysate (50 µg) from NIH 3T3, CT26, CH27, TCMK-1, and BW5147.3 cells prepared using NETN lysis buffer. *Antibody:* Rabbit anti-SMC1 recombinant monoclonal antibody [BL-205-2G8] (A700-018 lot 3) used at 1:1000. *Secondary:* HRP-conjugated goat anti-rabbit IgG (A120-101P). Chemiluminescence with an exposure time of 10 seconds. Lower Panel: Rabbit anti-COPB2 antibody (A304-523A).



Detection of human SMC1 by western blot of immunoprecipitates. *Samples:* Whole cell lysate (1.0 mg per IP reaction; 20% of IP loaded) from HeLa cells prepared using NETN lysis buffer. *Antibodies:* Rabbit anti-SMC1 recombinant monoclonal antibody [BL-205-2G8] (A700-018 lot 3) used for IP at 20 µl/mg lysate. SMC1 was also immunoprecipitated by a previous lot of this antibody (A700-018 lot 2) and a second antibody against a different epitope of SMC1 (A300-055A). For blotting immunoprecipitated SMC1, A700-018 was used at 1:1000. Chemiluminescence with an exposure time of 10 seconds.

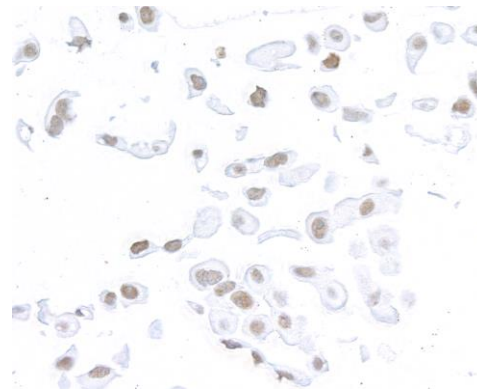


Detection of human SMC1 by immunohistochemistry. *Sample:* FFPE section of human ovarian carcinoma. *Antibody:* Rabbit anti-SMC1 recombinant monoclonal antibody [BL-205-2G8] (A700-018 lot 3). *Secondary:* HRP-conjugated goat anti-rabbit IgG (A120-501P).

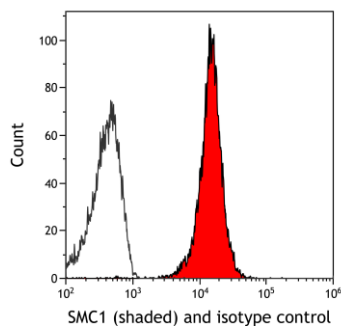
**Detection of mouse SMC1 by immunohistochemistry.**

Sample: FFPE section of mouse renal cell carcinoma.

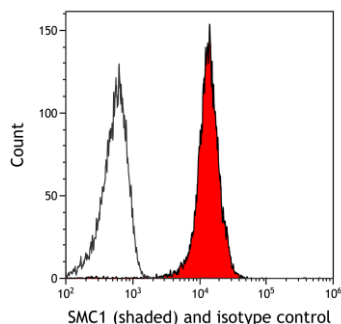
Antibody: Rabbit anti-SMC1 recombinant monoclonal antibody [BL-205-2G8] (A700-018 lot 3). *Secondary:* HRP-conjugated goat anti-rabbit IgG (A120-501P).

**Detection of human SMC1 by immunocytochemistry.**

Sample: FFPE section of NCI-H226 cells. *Antibody:* Rabbit anti-SMC1 recombinant monoclonal antibody [BL-205-2G8] (A700-018 lot 3). *Secondary:* HRP-conjugated goat anti-rabbit IgG (A120-501P).



Detection of human SMC1 (shaded) in HT-29 cells by flow cytometry. *Antibody:* Rabbit anti-SMC1 recombinant monoclonal [BL-205-2G8] (A700-018) or isotype control (unshaded). *Secondary:* DyLight® 650-conjugated goat anti-rabbit IgG (A120-101D5).



Detection of mouse SMC1 (shaded) in NIH3T3 cells by flow cytometry. *Antibody:* Rabbit anti-SMC1 recombinant monoclonal [BL-205-2G8] (A700-018) or isotype control (unshaded). *Secondary:* DyLight® 650-conjugated goat anti-rabbit IgG (A120-101D5).