

# SMC1 Recombinant Monoclonal Antibody [BL-205-2G8]

Rabbit Recombinant Monoclonal

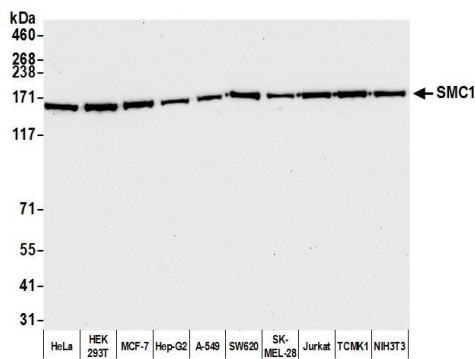
Purified		Protein ID	NP_006297.2
Catalog No.	A700-018-T	GeneID	8243
Lot No.	A700-018-T-2		



<b>APPLICATIONS</b>	WB, IP, IHC, ICC, IHC-IF, F												
<b>SPECIES REACTIVITY</b>	Human, Mouse												
<b>PRESUMED REACTIVITY</b>	Based on 100% sequence identity, this antibody is predicted to react with Rat and Bovine												
<b>AMOUNT</b>	20 µl (2 blots)												
<b>CONCENTRATION</b>	50 µg/ml												
<b>STORAGE/SHELF LIFE</b>	2 – 8° C / 1 year from date of receipt												
<b>PHYSICAL STATE</b>	Liquid												
<b>BUFFER</b>	Borate Buffered Saline (BBS) pH 8.2 with 0.1% BSA and 0.09% Sodium Azide												
<b>ISOTYPE</b>	IgG												
<b>CLONE #</b>	BL-205-2G8												
<b>ORIGIN</b>	USA												
<b>PRODUCTION PROCEDURES</b>	<p>Recombinant antibody was purified from cell culture supernatant.</p> <p>Immunogen was a synthetic peptide representing a region between residue 1200 and the C-terminus (residue 1233) of human structural maintenance of chromosomes 1 according to the numbering given in entry NP_006297.2 (GeneID 8243).</p>												
<b>APPLICATIONS</b>	<p>Centrifuge tube to remove product from lid. Optimal working dilutions should be determined experimentally by the investigator. Prepare working dilution immediately before use.</p> <table><tbody><tr><td>Western Blot</td><td>1:1000</td></tr><tr><td>Immunoprecipitation</td><td>20 µl/mg lysate</td></tr><tr><td>Immunohistochemistry</td><td>1:100 – 1:500. Epitope retrieval with citrate buffer pH 6.0 is recommended for FFPE tissue sections.</td></tr><tr><td>Immunocytochemistry</td><td>1:100 – 1:500. Epitope retrieval with citrate buffer pH6.0 is recommended for FFPE cell sections.</td></tr><tr><td>Immunofluorescence (IHC)</td><td>1:100 – 1:500. Epitope retrieval with citrate buffer pH 6.0 is recommended for FFPE tissue sections.</td></tr><tr><td>Flow Cytometry</td><td>Fixed in 4% formaldehyde and permeabilized with 90% methanol. 1 µl per 1 x 10<sup>6</sup> cells.</td></tr></tbody></table>	Western Blot	1:1000	Immunoprecipitation	20 µl/mg lysate	Immunohistochemistry	1:100 – 1:500. Epitope retrieval with citrate buffer pH 6.0 is recommended for FFPE tissue sections.	Immunocytochemistry	1:100 – 1:500. Epitope retrieval with citrate buffer pH6.0 is recommended for FFPE cell sections.	Immunofluorescence (IHC)	1:100 – 1:500. Epitope retrieval with citrate buffer pH 6.0 is recommended for FFPE tissue sections.	Flow Cytometry	Fixed in 4% formaldehyde and permeabilized with 90% methanol. 1 µl per 1 x 10 <sup>6</sup> cells.
Western Blot	1:1000												
Immunoprecipitation	20 µl/mg lysate												
Immunohistochemistry	1:100 – 1:500. Epitope retrieval with citrate buffer pH 6.0 is recommended for FFPE tissue sections.												
Immunocytochemistry	1:100 – 1:500. Epitope retrieval with citrate buffer pH6.0 is recommended for FFPE cell sections.												
Immunofluorescence (IHC)	1:100 – 1:500. Epitope retrieval with citrate buffer pH 6.0 is recommended for FFPE tissue sections.												
Flow Cytometry	Fixed in 4% formaldehyde and permeabilized with 90% methanol. 1 µl per 1 x 10 <sup>6</sup> cells.												
<b>IHC HUMAN CONTROLS</b>	Breast Carcinoma, Colon Carcinoma, Skin Carcinoma, A-549 Cells, HCT 116 Cells, HeLa Cells, Jurkat Cells, MOLT-4 Cells												
<b>ADDITIONAL INFO</b>	<p><a href="https://www.bethyl.com/product/A700-018-T">https://www.bethyl.com/product/A700-018-T</a></p> <p>Use the link above to view SDS, a current list of citations, and other product specific information.</p>												

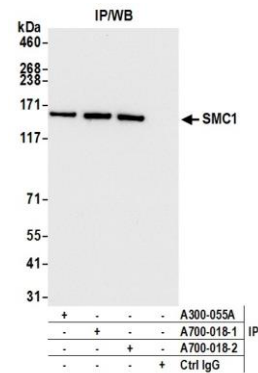
This document certifies that this product has met all of the quality control standards defined by Bethyl Laboratories, Inc.  
Eric McIntush, PhD | Chief Scientific Officer

Date: August 17, 2020



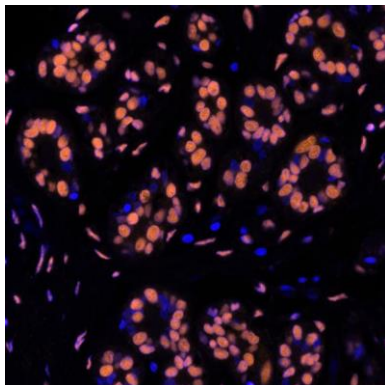
**Detection of human and mouse SMC1 by western blot.**

*Samples:* Whole cell lysate (50 µg) from HeLa, HEK293T, MCF-7, Hep-G2, A-549, SW620, SK-MEL-28, Jurkat, TCMK-1, and NIH 3T3 cells prepared using NETN lysis buffer. *Antibody:* Rabbit anti-SMC1 recombinant monoclonal antibody [BL-205-2G8] (A700-018-T lot 2) used at 1:1000. *Secondary:* HRP-conjugated goat anti-rabbit IgG (A120-101P). Chemiluminescence with an exposure time of 10 seconds.

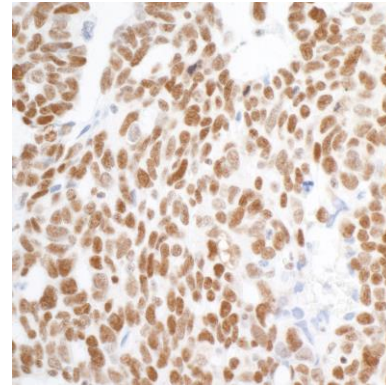


**Detection of human SMC1 by western blot of immunoprecipitates.**

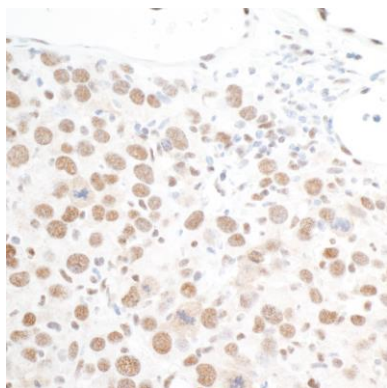
*Samples:* Whole cell lysate (1.0 mg per IP reaction; 20% of IP loaded) from HeLa cells prepared using NETN lysis buffer. *Antibodies:* Rabbit anti-SMC1 recombinant monoclonal antibody [BL-205-2G8] (A700-018-T lot 2) used for IP at 20 µl/mg lysate. SMC1 was also immunoprecipitated by a previous lot of this antibody (lot A700-018-T-1) and rabbit anti-SMC1 antibody A300-055A. For blotting immunoprecipitated SMC1, A700-018-T was used at 1:1000. Chemiluminescence with an exposure time of 3 seconds.



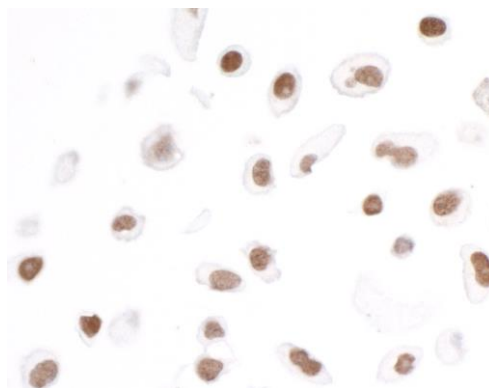
**Detection of human SMC1 in FFPE breast carcinoma by immunohistochemistry-IF.** *Antibody:* Rabbit anti-SMC1 recombinant monoclonal antibody [BL-205-2G8] (A700-018-T Lot 1). *Secondary:* HRP-conjugated goat anti-rabbit IgG (A120-501P). *Substrate:* Opal™. Counterstain: DAPI.



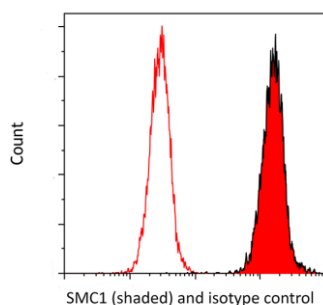
**Detection of human SMC1 in FFPE ovarian carcinoma by IHC.** *Antibody:* Rabbit anti-SMC1 recombinant monoclonal antibody [BL-205-2G8] (A700-018-T lot 2). *Secondary:* HRP-conjugated goat anti-rabbit IgG (A120-101P). *Substrate:* DAB.



**Detection of mouse SMC1 in FFPE renal cell carcinoma by IHC.** *Antibody:* Rabbit anti-SMC1 recombinant monoclonal antibody [BL-205-2G8] (A700-018-T lot 2). *Secondary:* HRP-conjugated goat anti-rabbit IgG (A120-101P). *Substrate:* DAB.



**Detection of human SMC1 in FFPE NCI-H226 cells by ICC.** *Antibody:* Rabbit anti-SMC1 recombinant monoclonal antibody [BL-205-2G8] (A700-018-T lot 2). *Secondary:* HRP-conjugated goat anti-rabbit IgG (A120-101P). *Substrate:* DAB.



**Detection of human SMC1 (shaded) in MOLT4 cells by flow cytometry.** *Antibody:* Rabbit anti-SMC1 recombinant monoclonal [BL-205-2G8] (A700-018-T lot 1) or isotype control (unshaded). *Secondary:* DyLight® 650-conjugated goat anti-rabbit IgG (A120-201D5).