

# PD-L1 Recombinant Monoclonal Antibody [BLR020E]

## Rabbit Recombinant Monoclonal

Purified		RefSeq ID	NP_054862.1
Catalog No.	A700-020	Uniprot ID	Q9NZQ7
Lot No.	3	GeneID	29126

---

<b>APPLICATIONS</b>	WB, IP, IHC, IHC-IF, ICC-IF, Flow Cyt, mIF
<b>SPECIES REACTIVITY</b>	Human
<b>AMOUNT</b>	100 µl (50+ tests)
<b>CONCENTRATION</b>	50 µg/ml
<b>STORAGE/SHELF LIFE</b>	2 - 8°C / 1 year from date of receipt
<b>PHYSICAL STATE</b>	Liquid
<b>BUFFER</b>	Borate Buffered Saline (BBS) pH 8.2 with 0.1% BSA and 0.09% Sodium Azide
<b>ISOTYPE</b>	IgG
<b>CLONE #</b>	BLR020E
<b>ORIGIN</b>	USA
<b>PRODUCTION PROCEDURES</b>	Recombinant antibody was purified from cell culture supernatant.

Immunogen was a synthetic peptide representing a region between residue 250 and the C-terminus (residue 290) of human programmed cell death 1 ligand 1 (PD-L1) according to the numbering given in entry NP\_054862.1 (GeneID 29126).

<b>APPLICATIONS</b>	Centrifuge tube to remove product from lid. Optimal working dilutions should be determined experimentally by the investigator. Prepare working dilution immediately before use.
Western Blot	1:1000
Immunoprecipitation	20 µl/mg lysate
Immunohistochemistry	1:100 – 1:500. Epitope retrieval with citrate buffer pH 6.0 is recommended for FFPE tissue sections.
Immunofluorescence (IHC)	1:100 – 1:500. Epitope retrieval with citrate buffer pH 6.0 is recommended for FFPE tissue sections.
Immunofluorescence (ICC)	1:100 – 1:500. Epitope retrieval with citrate buffer pH 6.0 is recommended for FFPE cell sections.
Flow Cytometry	Fixed in 4% formaldehyde and permeabilized with 90% methanol. 2 µl per 1 x 10 <sup>6</sup> cells.
Multiplex Immunofluorescence	1:250

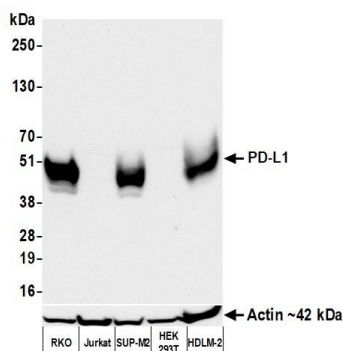
**APPLICATION NOTES** All western blot analysis is performed using 5% Milk-TBST for blocking and as antibody diluent. Primary antibody is incubated overnight.

Western blots of cell lysates are performed using Goat anti-Rabbit IgG Heavy and Light Chain Antibody (Cat. No. A120-101P).

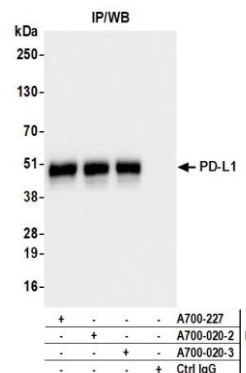
Western blots of immunoprecipitates are performed using Goat anti-Rabbit Light Chain HRP Conjugate (Cat. No. A120-113P) with 5% Normal Pig Serum (Cat. No. S100-020) added to the blocking buffer.

**IHC HUMAN CONTROLS** Lung Carcinoma, Tonsil, HDLM-2 Cells, SUP-M2 Cells

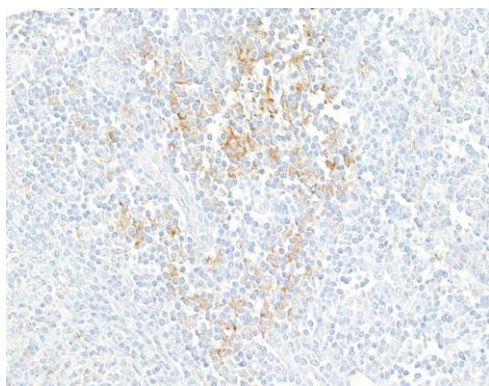
**ADDITIONAL INFO** <https://www.fortislife.com/p/A700-020>  
Use the link above to view SDS, a current list of citations, and other product specific information.



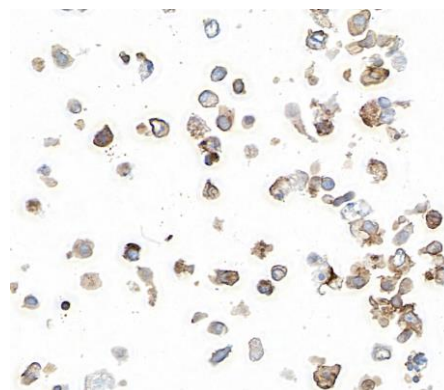
**Detection of human PD-L1 by western blot.** *Samples:* Whole cell lysate (50 µg) from RKO, Jurkat, SUP-M2, HEK293T, and HDLM-2 cells prepared using NETN lysis buffer. *Antibody:* Rabbit anti-PD-L1 recombinant monoclonal antibody [BLR020E] (A700-020 lot 3) used at 1:1000. *Secondary:* HRP-conjugated goat anti-rabbit IgG (A120-101P). *Detection:* Chemiluminescence with an exposure time of 30 seconds. Lower Panel: Rabbit anti-Actin recombinant monoclonal antibody [BLR057F] (A700-057).



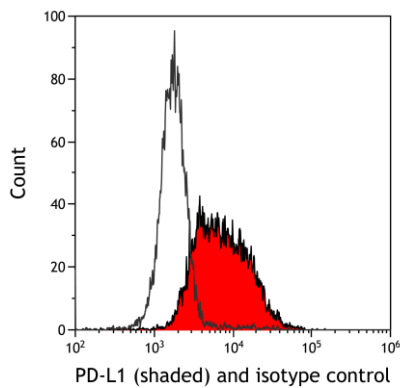
**Detection of human PD-L1 by western blot of immunoprecipitates.** *Samples:* Whole cell lysate (1.0 mg per IP reaction; 20% of IP loaded) from RKO cells prepared using NETN lysis buffer. *Antibodies:* Rabbit anti-PD-L1 recombinant monoclonal antibody [BLR020E] (A700-020 lot 3) used for IP at 20 µl/mg lysate. PD-L1 was also immunoprecipitated by a previous lot of this antibody (A700-020 lot 2) and a second antibody against a different epitope of PD-L1 (A700-227). For blotting immunoprecipitated PD-L1, A700-020 was used at 1:1000. *Detection:* Chemiluminescence with an exposure time of 3 seconds.



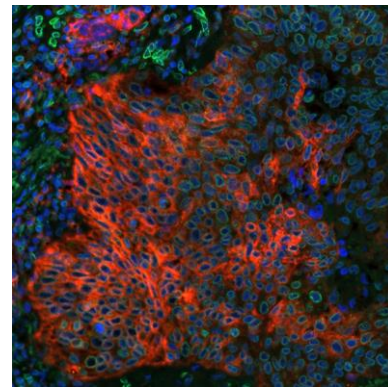
**Detection of human PD-L1 by immunohistochemistry.** *Sample:* FFPE section of human tonsil. *Antibody:* Rabbit anti-PD-L1 recombinant monoclonal antibody [BLR020E] (A700-020). *Secondary:* HRP-conjugated goat anti-rabbit IgG (A120-501P).



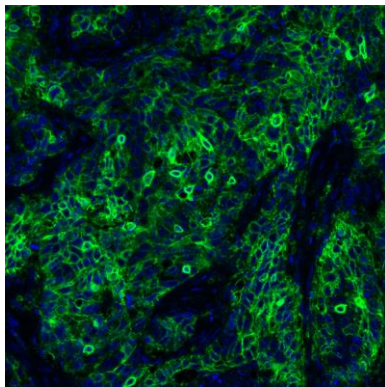
**Detection of human PD-L1 by immunocytochemistry.** *Sample:* FFPE section of human SUP-M2 cells. *Antibody:* Rabbit anti-PD-L1 recombinant monoclonal antibody [BLR020E] (A700-020). *Secondary:* HRP-conjugated goat anti-rabbit IgG (A120-501P).



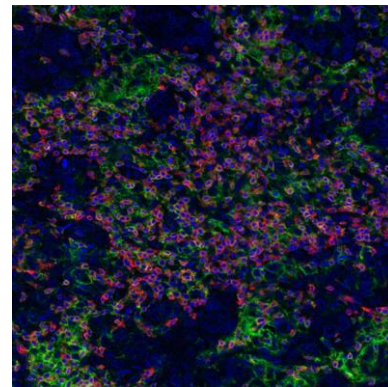
**Detection of human PD-L1 (shaded) in HDLM-2 cells by flow cytometry.** *Antibody:* Rabbit anti-PD-L1 recombinant monoclonal antibody [BLR020E] (A700-020) or isotype control (unshaded). *Secondary:* DyLight® 488-conjugated goat anti-rabbit IgG (A120-101D2).



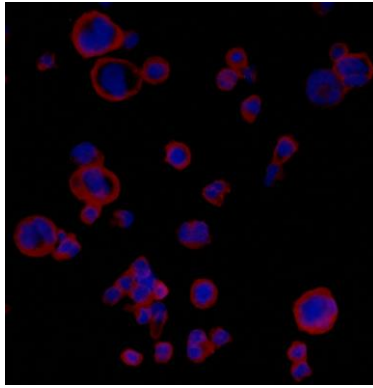
**Detection of human PD-L1 (red) and Lamin-A/C (green) in FFPE lung carcinoma by IHC-IF.** *Antibody:* Rabbit anti-PD-L1 recombinant monoclonal [BLR020E] (A700-020) and rabbit anti-Lamin-A/C (A303-430A). *Secondary:* DyLight® 594-conjugated goat anti-rabbit IgG (A120-201D4) and DyLight® 488-conjugated goat anti-rabbit IgG (A120-201D2). *Counterstain:* DAPI (blue).



**Detection of human PD-L1 (green) by immunohistochemistry.** *Sample:* FFPE section of human lung carcinoma. *Antibody:* Rabbit anti-PD-L1 recombinant monoclonal antibody [BLR020E] (A700-020) used at 1:250. *Secondary:* HRP-conjugated goat anti-rabbit IgG (A120-501P). *Substrate:* Opal™. *Counterstain:* DAPI (blue).



**Detection of human PD-L1 by immunocytochemistry.** *Sample:* FFPE section of human SUP-M2 cells. *Antibody:* Rabbit anti-PD-L1 recombinant monoclonal antibody [BLR020E] (A700-020). *Secondary:* HRP-conjugated goat anti-rabbit IgG (A120-501P).

**Detection of human PD-L1 by immunocytochemistry.**

*Sample:* Formaldehyde-fixed HDLM-2 cells. *Antibody:* Rabbit anti-PD-L1 recombinant monoclonal antibody [BLR020E] (A700-020) used at 1:100. *Secondary:* DyLight® 594-conjugated goat anti-rabbit IgG (A120-201D4).

This document certifies that this product has met all of the quality control standards defined by Bethyl Laboratories, Inc.  
Michael Spencer, PhD

Date: April 10, 2024