

# PD-L1 Recombinant Monoclonal Antibody [BLR020E]

Rabbit Recombinant Monoclonal

Purified		Protein ID	NP_054862.1
Catalog No.	A700-020-T	GeneID	29126
Lot No.	A700-020-T-2		



<b>APPLICATIONS</b>	WB, IP, IHC, IHC-IF, ICC-IF, mIF
<b>SPECIES REACTIVITY</b>	Human
<b>AMOUNT</b>	10 µl (5+ tests)
<b>CONCENTRATION</b>	50 µg/ml
<b>STORAGE/SHELF LIFE</b>	2 – 8° C / 1 year from date of receipt
<b>PHYSICAL STATE</b>	Liquid
<b>BUFFER</b>	Borate Buffered Saline (BBS) pH 8.2 with 0.1% BSA and 0.09% Sodium Azide
<b>ISOTYPE</b>	IgG
<b>CLONE #</b>	BLR020E
<b>ORIGIN</b>	USA
<b>PRODUCTION PROCEDURES</b>	Recombinant antibody was purified from cell culture supernatant.

Immunogen was a synthetic peptide representing a region between residue 250 and the C-terminus (residue 290) of human programmed cell death 1 ligand 1 (PD-L1) according to the numbering given in entry NP\_054862.1 (GeneID 29126).

**APPLICATIONS** Centrifuge tube to remove product from lid. Optimal working dilutions should be determined experimentally by the investigator. Prepare working dilution immediately before use.

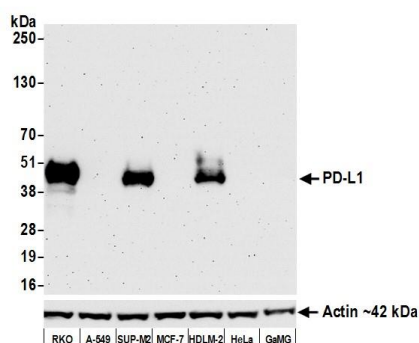
Western Blot	1:1000
Immunoprecipitation	20 µl/mg lysate
Immunohistochemistry	1:100 – 1:500. Epitope retrieval with citrate buffer pH 6.0 is recommended for FFPE tissue sections.
Immunofluorescence (IHC)	1:100 – 1:500. Epitope retrieval with citrate buffer pH 6.0 is recommended for FFPE tissue sections.
Immunofluorescence (ICC)	1:100 – 1:500. Epitope retrieval with citrate buffer pH6.0 is recommended for FFPE cell sections.
Multiplex Immunofluorescence	1:250

**IHC HUMAN CONTROLS** Lung Carcinoma, Tonsil, HDLM-2 Cells, SUP-M2 Cells

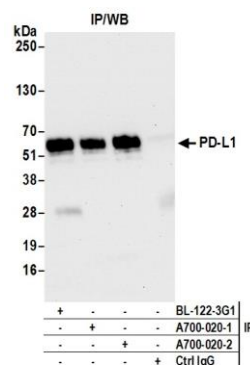
**ADDITIONAL INFO** <https://www.bethyl.com/product/A700-020-T>  
Use the link above to view SDS, a current list of citations, and other product specific information.

This document certifies that this product has met all of the quality control standards defined by Bethyl Laboratories, Inc.  
Eric McIntush, PhD | Chief Scientific Officer

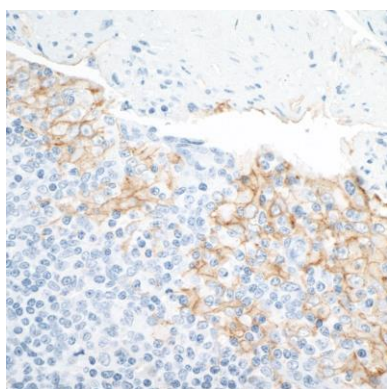
Date: March 25, 2020



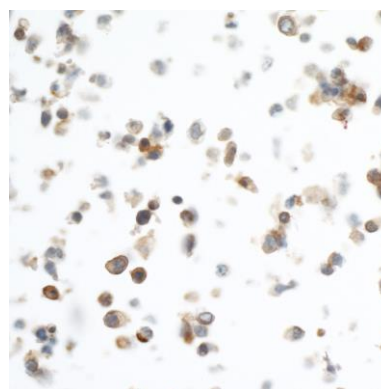
**Detection of human PD-L1 by western blot. *Samples:*** Whole cell lysate (50 µg) from RKO, A-549, SUP-M2, MCF-7, HDLM-2, HeLa, and GaMG cells prepared using NETN lysis buffer. ***Antibody:*** Rabbit anti-PD-L1 recombinant monoclonal antibody [BLR020E] (A700-020-T lot 2) used at 1:1000. ***Secondary:*** HRP-conjugated goat anti-rabbit IgG (A120-101P). Chemiluminescence with an exposure time of 3 minutes. Lower Panel: Rabbit anti-Actin recombinant monoclonal antibody [BLR052F] (A700-052).



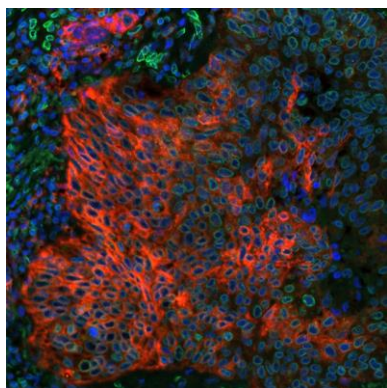
**Detection of human PD-L1 by western blot of immunoprecipitates. *Samples:*** Whole cell lysate (1.0 mg per IP reaction; 20% of IP loaded) from RKO cells prepared using NETN lysis buffer. ***Antibodies:*** Rabbit anti-PD-L1 recombinant monoclonal antibody [BLR020E] (A700-020-T lot 2) used for IP at 20 µl/mg lysate. PD-L1 was also immunoprecipitated by a previous lot of this antibody (lot A700-020-T-1) and rabbit anti-PD-L1 recombinant monoclonal antibody [BL-122-3G1]. For blotting immunoprecipitated PD-L1, A700-020-T was used at 1:1000. Chemiluminescence with an exposure time of 10 seconds.



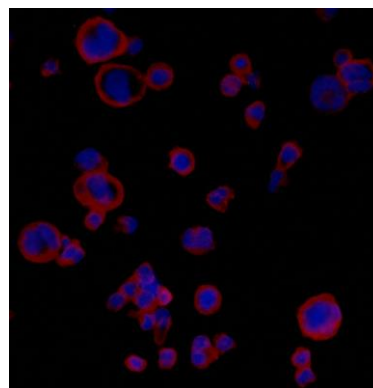
**Detection of human PD-L1 in FFPE tonsil by IHC. *Antibody:*** Rabbit anti-PD-L1 recombinant monoclonal antibody [BLR020E] (A700-020-T lot 2). ***Secondary:*** HRP-conjugated goat anti-rabbit IgG (A120-501P). ***Substrate:*** DAB.



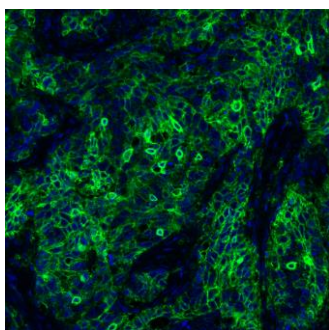
**Detection of human PD-L1 in FFPE Sup-M2 cells by ICC. *Antibody:*** Rabbit anti-PD-L1 recombinant monoclonal antibody [BLR020E] (A700-020-T lot 2). ***Secondary:*** HRP-conjugated goat anti-rabbit IgG (A120-501P). ***Substrate:*** DAB.



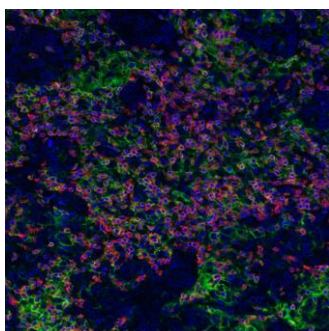
**Detection of human PD-L1 (red) and Lamin-A/C (green) in FFPE lung carcinoma by IHC-IF.** *Antibody:* Rabbit anti-PD-L1 recombinant monoclonal [BLR020E] (A700-020-T) and rabbit anti-Lamin-A/C (A303-430A). *Secondary:* DyLight® 594-conjugated goat anti-rabbit IgG (A120-201D4) and DyLight® 488-conjugated goat anti-rabbit IgG (A120-201D2). *Counterstain:* DAPI (blue).



**Detection of human PD-L1 by immunocytochemistry.** *Sample:* Formaldehyde-fixed HDLM-2 cells. *Antibody:* Rabbit anti-PD-L1 recombinant monoclonal antibody [BLR020E] (A700-020-T lot 1) used at 1:100. *Secondary:* DyLight® 594-conjugated goat anti-rabbit IgG (A120-201D4).



**Detection of human PD-L1 (green) by immunohistochemistry.** *Sample:* FFPE section of human lung carcinoma. *Antibody:* Rabbit anti-PD-L1 recombinant monoclonal antibody [BLR020E] (A700-020-T lot 1) used at 1:250. *Secondary:* HRP-conjugated goat anti-rabbit IgG (A120-501P). *Substrate:* Opal™. *Counterstain:* DAPI (blue).



**Detection of human CD3E (orange), CD8 alpha (red), and PD-L1 (green) in FFPE breast carcinoma by IHC-IF.** Rabbit anti-CD3E recombinant monoclonal [BL-298-5D12] (A700-016), rabbit anti-CD8 alpha recombinant monoclonal [BLR044F] (A700-044), rabbit anti-PD-L1 recombinant monoclonal [BLR020E] (A700-020). *Secondary:* HRP-conjugated goat anti-rabbit IgG (A120-501P). *Substrate:* Opal™ 520, 620, and 690. *Counterstain:* DAPI (blue).