

# Ki-67 Recombinant Monoclonal Antibody [BLR021E]

Rabbit Recombinant Monoclonal

Purified Protein ID NP\_002408.3  
Catalog No. A700-021 GeneID 4288  
Lot No. A700-021-2



**APPLICATIONS** IHC, ICC, IHC-IF, ICC-IF, F, mIF  
**SPECIES REACTIVITY** Human  
**AMOUNT** 100 µl (50+ tests)  
**CONCENTRATION** 50 µg/ml  
**STORAGE/SHELF LIFE** 2 - 8° C / 1 year from date of receipt  
**PHYSICAL STATE** Liquid  
**BUFFER** Borate Buffered Saline (BBS) pH 8.2 with 0.1% BSA and 0.09% Sodium Azide  
**ISOTYPE** IgG  
**CLONE #** BLR021E  
**ORIGIN** USA  
**PRODUCTION PROCEDURES** Recombinant antibody was purified from cell culture supernatant.

Immunogen was a peptide representing the repetitive 66 bp element of human Ki-67 using the numbering given in entry NP\_002408.2 (GeneID 4288).

**APPLICATIONS** Centrifuge tube to remove product from lid. Optimal working dilutions should be determined experimentally by the investigator. Prepare working dilution immediately before use.

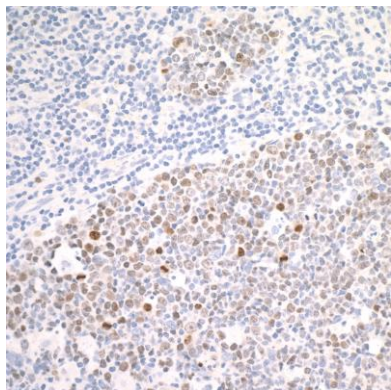
Immunohistochemistry 1:100 to 1:500. Epitope retrieval with citrate buffer pH 6.0 is recommended for FFPE tissue sections.  
Immunocytochemistry 1:100 to 1:500. Epitope retrieval with citrate buffer pH 6.0 is recommended for FFPE cell sections.  
Immunofluorescence (IHC) 1:100 to 1:500. Epitope retrieval with citrate buffer pH6.0 is recommended for FFPE tissue sections.  
Immunofluorescence (ICC) 1:100 - 1:500  
Flow Cytometry Fixed in 4% formaldehyde and permeabilized with 90% methanol. 1 µl per  $1 \times 10^6$  cells.  
Multiplex Immunofluorescence 1:250

**IHC HUMAN CONTROLS** Lung Carcinoma TIL, Ovarian Carcinoma, Tonsil, HeLa Cells, HL-60 Cells, Jurkat Cells, MOLT-4 Cells, OVCAR-8 Cells

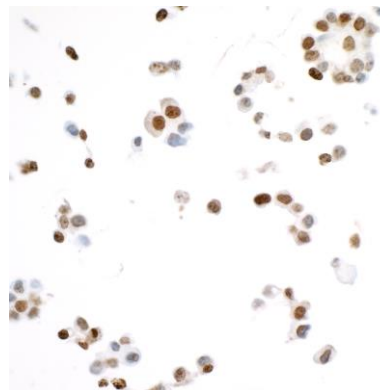
**ADDITIONAL INFO** <https://www.bethyl.com/product/A700-021>

Use the link above to view SDS, a current list of citations, and other product specific information.

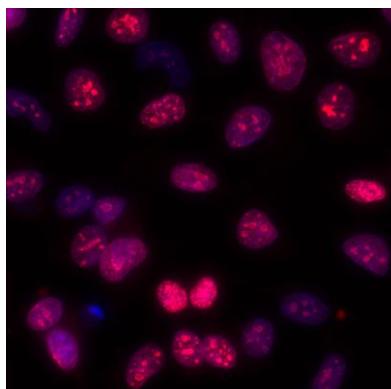
This document certifies that this product has met all of the quality control standards defined by Bethyl Laboratories, Inc.  
Eric McIntush, PhD | Chief Scientific Officer Date: April 1, 2020



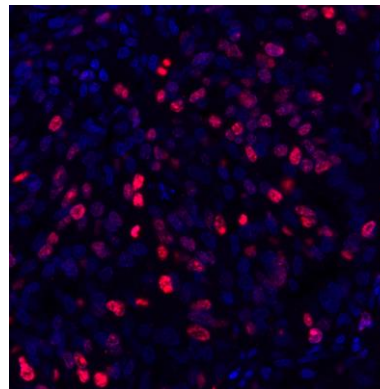
**Detection of human Ki-67 in FFPE tonsil by IHC.** *Antibody:* Rabbit anti-Ki-67 recombinant monoclonal antibody [BLR021E] (A700-021 lot 2). *Secondary:* HRP-conjugated goat anti-rabbit IgG (A120-501P). *Substrate:* DAB.



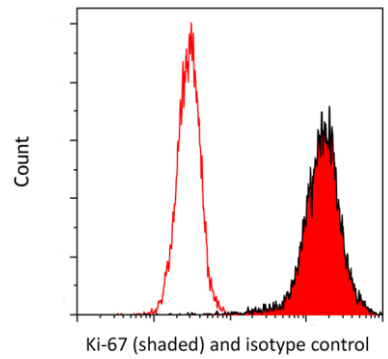
**Detection of human Ki-67 in FFPE OVCAR-4 cells by ICC.** *Antibody:* Rabbit anti-Ki-67 recombinant monoclonal antibody [BLR021E] (A700-021 lot 2). *Secondary:* HRP-conjugated goat anti-rabbit IgG (A120-501P). *Substrate:* DAB.



**Detection of human Ki-67 by immunocytochemistry.** *Sample:* acetone/methanol fixed HeLa cells. *Antibody:* Rabbit anti-Ki-67 recombinant monoclonal antibody [BLR021E] (A700-021 lot 1) used at 1:100. *Secondary:* DyLight® 594-conjugated goat anti-rabbit IgG (A120-101D4). *Counterstain:* DAPI.



**Detection of human Ki-67 (red) by immunohistochemistry.** *Sample:* FFPE section of human ovarian carcinoma. *Antibody:* Rabbit anti-Ki-67 recombinant monoclonal antibody [BLR021E] (A700-021 lot 1) used at 1:500. *Secondary:* HRP-conjugated goat anti-rabbit IgG (A120-501P). *Substrate:* Opal™. *Counterstain:* DAPI (blue).



**Detection of human Ki-67 (shaded) in MOLT4 cells by flow cytometry.** *Antibody:* Rabbit anti-Ki-67 recombinant monoclonal [BLR021E] (A700-021 lot 1) or isotype control (unshaded). *Secondary:* DyLight® 650-conjugated goat anti-rabbit IgG (A120-201D5).