

# FUS Recombinant Monoclonal Antibody [BLR023E]

Rabbit Recombinant Monoclonal

Purified Protein ID NP\_001164105.1  
Catalog No. A700-023 GeneID 2521  
Lot No. A700-023-2

---

**APPLICATIONS** WB, IP, IHC, IHC-IF, ICC-IF  
**SPECIES REACTIVITY** Human, Mouse  
**AMOUNT** 100 µl (10 blots)  
**CONCENTRATION** 30 µg/ml  
**STORAGE/SHELF LIFE** 2 – 8°C / 1 year from date of receipt  
**PHYSICAL STATE** Liquid  
**BUFFER** Borate Buffered Saline (BBS) pH 8.2 with 0.1% BSA and 0.09% Sodium Azide  
**ISOTYPE** IgG  
**CLONE #** BLR023E  
**ORIGIN** USA

**PRODUCTION PROCEDURES** Recombinant antibody was purified from cell culture supernatant.

Immunogen was a peptide representing a region between residues 1 and 50 of human fusion (involved in t(12;16) in malignant liposarcoma) using the numbering given in SwissProt entry P35637 (GeneID 2521).

**APPLICATIONS** Centrifuge tube to remove product from lid. Optimal working dilutions should be determined experimentally by the investigator. Prepare working dilution immediately before use.

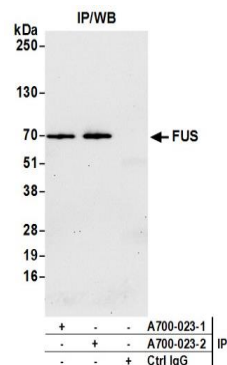
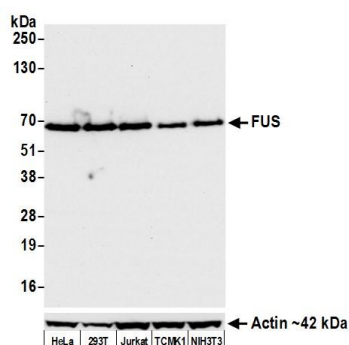
Western Blot	1:1000
Immunoprecipitation	20 µl/mg lysate
Immunohistochemistry	1:100 – 1:500. Epitope retrieval with citrate buffer pH6.0 is recommended for FFPE tissue sections.
Immunofluorescence (IHC)	1:100 to 1:500. Epitope retrieval with citrate buffer pH 6.0 is recommended for FFPE tissue sections.
Immunofluorescence (ICC)	1:100 to 1:500. Epitope retrieval with citrate buffer pH 6.0 is recommended for FFPE cell sections.

**IHC HUMAN CONTROLS** Breast, Breast Carcinoma, Colon Carcinoma, Lung Carcinoma TIL, Ovarian Carcinoma, HeLa Cells, Hep-G2 Cells

**ADDITIONAL INFO** <https://www.fortislife.com/p/A700-023>

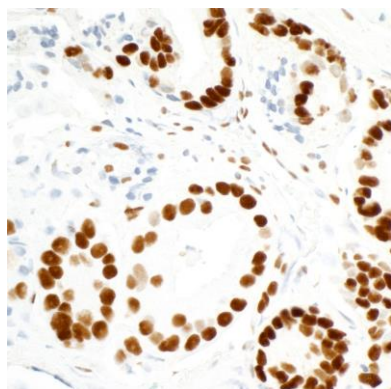
Use the link above to view SDS, a current list of citations, and other product specific information.

This document certifies that this product has met all of the quality control standards defined by Bethyl Laboratories, Inc.  
Michael Spencer, PhD Date: August 5, 2022

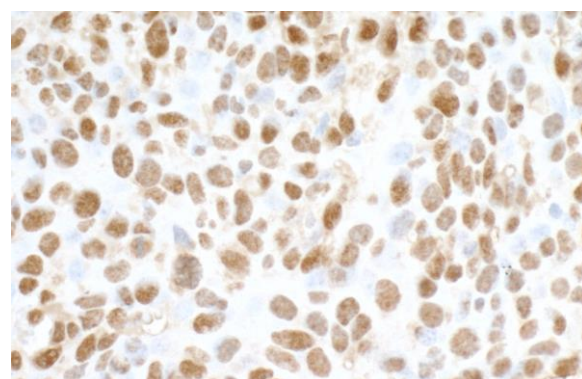


**Detection of human and mouse FUS by western blot.**  
*Samples:* Whole cell lysate (50 µg) from HeLa, HEK293T, Jurkat, TCMK-1, and NIH 3T3 cells prepared using NETN lysis buffer. *Antibody:* Rabbit anti-FUS recombinant monoclonal antibody [BLR023E] (A700-023 lot 2) used at 1:1000. *Secondary:* HRP-conjugated goat anti-rabbit IgG (A120-101P). Chemiluminescence with an exposure time of 10 seconds. Lower Panel: Rabbit anti-FUS recombinant monoclonal antibody [BLR054F] (A700-054).

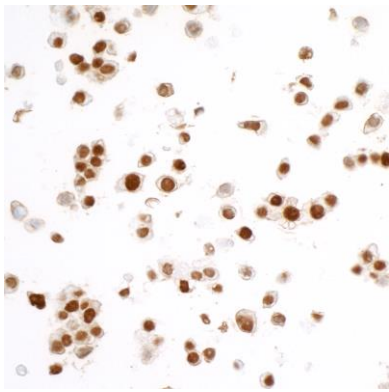
**Detection of human FUS by western blot of immunoprecipitates.** *Samples:* Whole cell lysate (1.0 mg per IP reaction; 20% of IP loaded) from HeLa cells prepared using NETN lysis buffer. *Antibodies:* Rabbit anti-FUS recombinant monoclonal antibody [BLR023E] (A700-023 lot 2) used for IP at 20 µl/mg lysate. FUS was also immunoprecipitated by a previous lot of this antibody (lot A700-023-1). For blotting immunoprecipitated FUS, A700-023 was used at 1:1000. Chemiluminescence with an exposure time of 30 seconds.



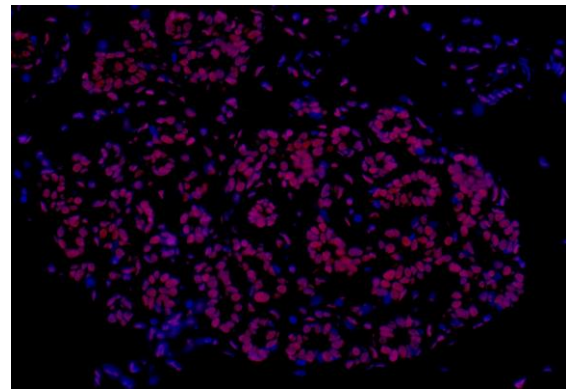
**Detection of human FUS in FFPE prostate carcinoma by IHC.** *Antibody:* Rabbit anti-FUS recombinant monoclonal antibody [BLR023E] (A700-023 lot 2). *Secondary:* HRP-conjugated goat anti-rabbit IgG (A120-501P). *Substrate:* DAB.



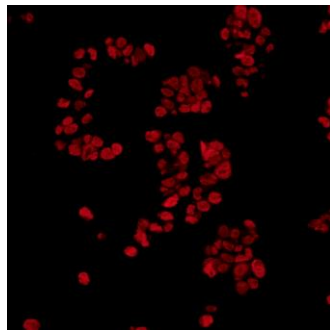
**Detection of mouse FUS in FFPE CT26 colon carcinoma by IHC.** *Antibody:* Rabbit anti-FUS recombinant monoclonal antibody [BLR023E] (A700-023 lot 2). *Secondary:* HRP-conjugated goat anti-rabbit IgG (A120-501P). *Substrate:* DAB.



**Detection of human FUS in FFPE Hep-G2 cells by ICC.**  
*Antibody:* Rabbit anti-FUS recombinant monoclonal antibody [BLR023E] (A700-023 lot 2). *Secondary:* HRP-conjugated goat anti-rabbit IgG (A120-501P). *Substrate:* DAB.



**Detection of human FUS by immunohistochemistry.**  
*Sample:* FFPE section of human breast. *Antibody:* Rabbit anti-FUS recombinant monoclonal antibody [BLR023E] (A700-023 lot 1) used at 1:250. *Secondary:* DyLight® 594-conjugated goat anti-rabbit IgG (A120-201D4).



**Detection of human FUS by immunocytochemistry.** *Sample:* FFPE section of Hep-G2 cells. *Antibody:* Rabbit anti-FUS recombinant monoclonal antibody [BLR023E] (A700-023 lot 1) used at 1:250. *Secondary:* DyLight® 594-conjugated goat anti-rabbit IgG (A120-201D4).