

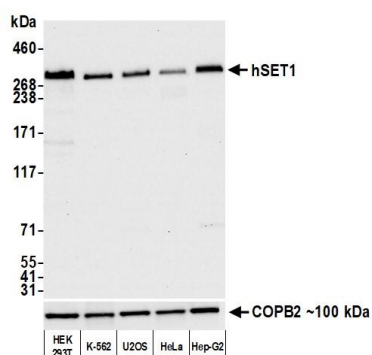
hSET1 Recombinant Monoclonal Antibody [BLR024E]

Rabbit Recombinant Monoclonal

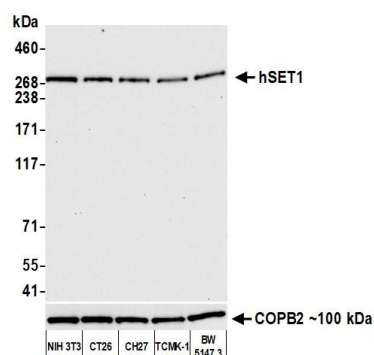
Purified Protein ID NP_055527.1
Catalog No. A700-024-T GenelD 9739
Lot No. A700-024-T-2

APPLICATIONS	WB, IP, IHC, ICC, IHC-IF
SPECIES REACTIVITY	Human, Mouse
AMOUNT	20 µl (2 blots)
CONCENTRATION	10 µg/ml
STORAGE/SHELF LIFE	2 – 8°C / 1 year from date of receipt
PHYSICAL STATE	Liquid
BUFFER	Borate Buffered Saline (BBS) pH 8.2 with 0.1% BSA and 0.09% Sodium Azide
ISOTYPE	IgG
CLONE #	BLR024E
ORIGIN	USA
PRODUCTION PROCEDURES	Recombinant antibody was purified from cell culture supernatant. Immunogen was a peptide representing a region between residues 1200 and 1250 of human hSET1 (KIAA0339) using the numbering given in TrEMBL entry O15047 (GeneID 9739)
APPLICATIONS	Centrifuge tube to remove product from lid. Optimal working dilutions should be determined experimentally by the investigator. Prepare working dilution immediately before use. Western Blot 1:1000 Immunoprecipitation 20 µl/mg lysate Immunohistochemistry 1:25 – 1:250. Epitope retrieval with citrate buffer pH6.0 is recommended for FFPE tissue sections. Immunocytochemistry 1:100 to 1:500. Epitope retrieval with citrate buffer pH6.0 is recommended for FFPE cell sections. Immunofluorescence (IHC) 1:25 to 1:250. Epitope retrieval with citrate buffer pH 6.0 is recommended for FFPE tissue sections.
IHC HUMAN CONTROLS	Breast, Breast Carcinoma, Colon Carcinoma, Lung Carcinoma, Ovarian Carcinoma, HCT 116 Cells, HEK293T Cells, Jurkat Cells, K-562 Cells
ADDITIONAL INFO	https://www.fortislife.com/p/A700-024-T Use the link above to view SDS, a current list of citations, and other product specific information.

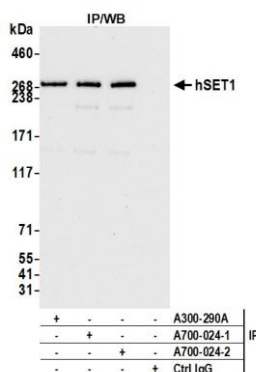
This document certifies that this product has met all of the quality control standards defined by Bethyl Laboratories, Inc.
Michael Spencer, PhD Date: August 5, 2022



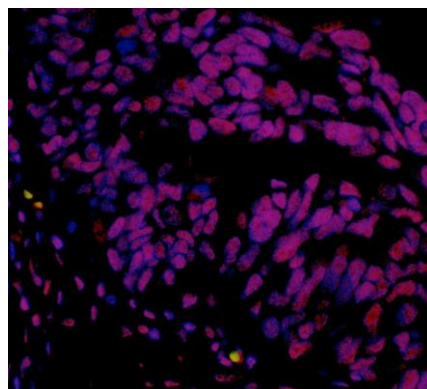
Detection of human hSET1 by western blot. *Samples:* Whole cell lysate (50 µg) from HEK293T, K-562, U2OS, HeLa, and Hep-G2 cells prepared using NETN lysis buffer. *Antibody:* Rabbit anti-hSET1 recombinant monoclonal antibody [A700-024 hSET1] (A700-024 lot 2) used at 1:1000. *Secondary:* HRP-conjugated goat anti-rabbit IgG (A120-101P). Chemiluminescence with an exposure time of 10 seconds.



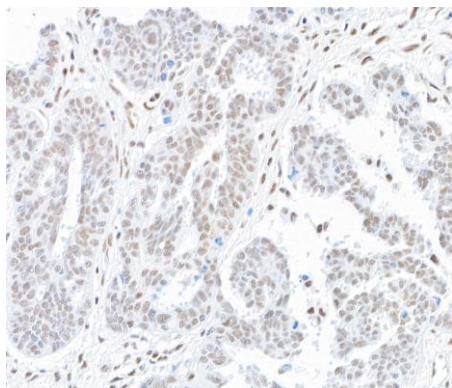
Detection of mouse hSET1 by western blot. *Samples:* Whole cell lysate (10 µg) from NIH 3T3, CT26, CH27, TCMK-1, and BW5147.3 cells prepared using NETN lysis buffer. *Antibody:* Rabbit anti-hSET1 recombinant monoclonal antibody [A700-024 hSET1] (A700-024 lot 2) used at 1:1000. *Secondary:* HRP-conjugated goat anti-rabbit IgG (A120-101P). Chemiluminescence with an exposure time of 10 seconds.



Detection of human hSET1 by western blot of immunoprecipitates. *Samples:* Whole cell lysate (1.0 mg per IP reaction; 5% of IP loaded) from HEK293T cells prepared using NETN lysis buffer. *Antibodies:* Rabbit anti-hSET1 recombinant monoclonal antibody [BL-178-12C7] (A700-024 lot 2) used for IP at 20 µl/mg lysate. hSET1 was also immunoprecipitated by a previous lot of this antibody (A700-024 lot 1) and a second antibody against a different epitope of hSET1 (A300-290A). For blotting immunoprecipitated hSET1, A700-024 was used at 1:1000. Chemiluminescence with an exposure time of 10 seconds.



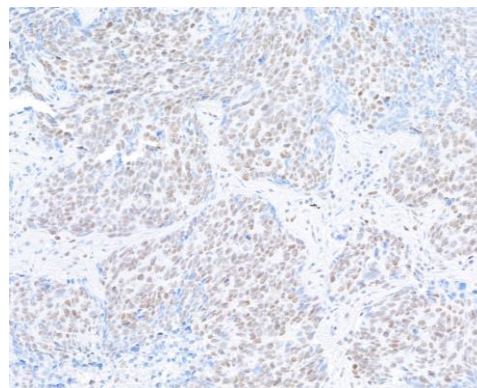
Detection of human hSET1 by immunohistochemistry. *Sample:* FFPE section of human ovarian carcinoma. *Antibody:* Rabbit anti-hSET1 recombinant monoclonal antibody [BLR024E] (A700-024-T lot 1) used at 1:25. *Secondary:* DyLight® 594-conjugated goat anti-rabbit IgG (A120-201D4).

**Detection of Human hSET1 by Immunohistochemistry.**

Sample: FFPE section of human ovarian carcinoma.

Antibody: Rabbit anti-hSET1 recombinant monoclonal antibody [BLR024E] (A700-024 Lot 2) used at 1:25.

Detection: DAB

**Detection of Human hSET1 by Immunohistochemistry.**

Sample: FFPE section of human lung cancer. *Antibody:*

Rabbit anti-hSET1 recombinant monoclonal antibody

[BLR024E] (A700-024 Lot 2) used at 1:25. *Detection:* DAB

**Detection of Human hSET1 by Immunocytochemistry. *Sample:* FFPE section of human Jurkat cells.**

Antibody: Rabbit anti-hSET1 recombinant monoclonal antibody [BLR024E] (A700-024 Lot 2) used at 1:25. *Detection:* DAB