

B7-H3/CD276 Recombinant Monoclonal Antibody [BLR025F]

Rabbit Recombinant Monoclonal

Purified		RefSeq ID	NP_001019907.1
Catalog No.	A700-025	Uniprot ID	Q5ZPR3
Lot No.	A700-025-2	GeneID	80381

APPLICATIONS WB, IP, IHC, ICC, IHC-IF, Flow Cyt

SPECIES REACTIVITY Human, Mouse

AMOUNT 100 µl (50+ tests)

CONCENTRATION 1000 µg/ml

STORAGE/SHELF LIFE 2 – 8°C / 1 year from date of receipt

PHYSICAL STATE Liquid

BUFFER Borate Buffered Saline (BBS) pH 8.2 with 0.09% Sodium Azide, BSA Free

ISOTYPE IgG

CLONE # BLR025F

ORIGIN USA

PRODUCTION PROCEDURES Recombinant antibody was purified from cell culture supernatant.

Immunogen was a peptide representing a region between residue 500 and the C-terminus (residue 534) of human CD276 Molecule using the numbering given in entry NP_001019907.1 (GeneID 80381).

APPLICATIONS Centrifuge tube to remove product from lid. Optimal working dilutions should be determined experimentally by the investigator. Prepare working dilution immediately before use.

Western Blot 1:1000

Immunoprecipitation 20 µl/mg lysate

Immunohistochemistry 1:100 – 1:500. Epitope retrieval with citrate buffer pH6.0 is recommended for FFPE tissue sections.

Immunocytochemistry 1:100 – 1:500. Epitope retrieval with citrate buffer pH6.0 is recommended for FFPE cell sections.

Immunofluorescence (IHC) 1:100 to 1:500. Epitope retrieval with citrate buffer pH6.0 is recommended for FFPE tissue sections.

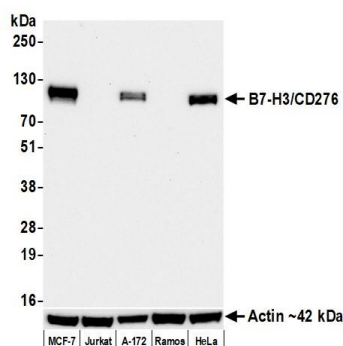
Flow Cytometry Fixed in 4% formaldehyde and permeabilized with 90% methanol. 1 µl per 1 x 10⁶ cells.

IHC HUMAN CONTROLS Breast Carcinoma, Lung Carcinoma, Ovarian Carcinoma, Prostate Carcinoma, A-172 Cells, HEK293T Cells, HeLa Cells, MCF-7 Cells

ADDITIONAL INFO <https://www.fortislife.com/p/A700-025>

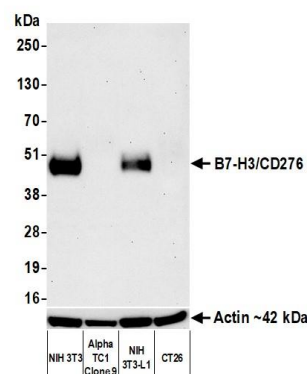
Use the link above to view SDS, a current list of citations, and other product specific information.

This document certifies that this product has met all of the quality control standards defined by Bethyl Laboratories, Inc.
Michael Spencer, PhD Date: December 16, 2022



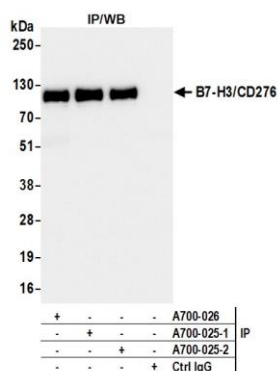
Detection of human B7-H3/CD276 by western blot.

Samples: Whole cell lysate (25 µg) from MCF-7, Jurkat, A-172, Ramos, and HeLa cells prepared using NETN lysis buffer. *Antibody:* Rabbit anti-B7-H3/CD276 recombinant monoclonal antibody [BLR025F] (A700-025A lot 2) used at 1:1000. *Secondary:* HRP-conjugated goat anti-rabbit IgG (A120-101P). Chemiluminescence with an exposure time of 30 seconds. Lower Panel: Rabbit anti-Actin recombinant monoclonal antibody [BLR057F] (A700-057).

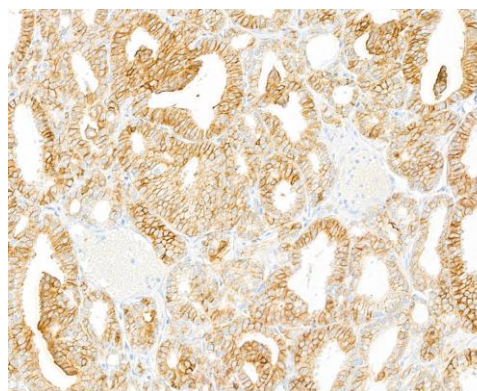


Detection of mouse B7-H3/CD276 by western blot.

Samples: Whole cell lysate (50 µg) from NIH 3T3, AlphaTC1 Clone 9, NIH 3T3-L1, and CT26 cells prepared using NETN lysis buffer. *Antibody:* Rabbit anti-B7-H3/CD276 recombinant monoclonal antibody [BLR025F] (A700-025 lot 2) used at 1:1000. *Secondary:* HRP-conjugated goat anti-rabbit IgG (A120-101P). Chemiluminescence with an exposure time of 3 minutes. Lower Panel: Rabbit anti-Actin recombinant monoclonal antibody [BLR057F] (A700-057).

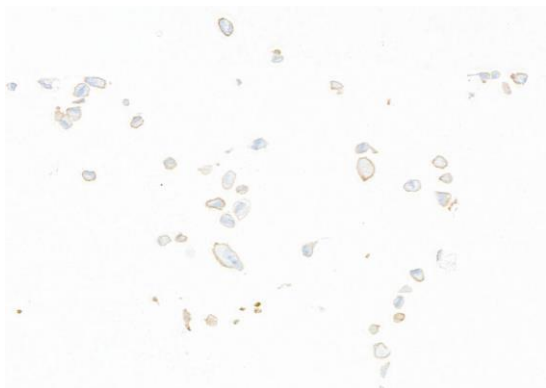


Detection of human B7-H3/CD276 by western blot of immunoprecipitates. *Samples:* Whole cell lysate (1.0 mg per IP reaction; 20% of IP loaded) from HeLa cells prepared using NETN lysis buffer. *Antibodies:* Rabbit anti-B7-H3/CD276 recombinant monoclonal antibody [BLR025F] (A700-025 lot 2) used for IP at 20 µl/mg lysate. B7-H3/CD276 was also immunoprecipitated by a previous lot of this antibody (A700-025 lot 1) and a second antibody against a different epitope of B7-H3/CD276 (A700-026). For blotting immunoprecipitated B7-H3/CD276, A700-025 was used at 1:1000. Chemiluminescence with an exposure time of 1 second.

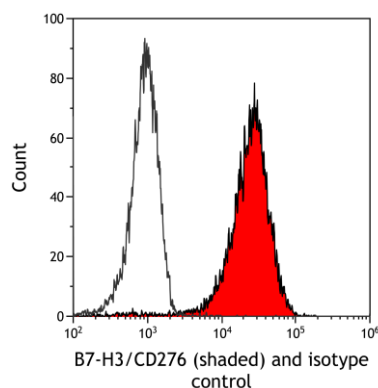


Detection of human B7-H3 by immunohistochemistry.

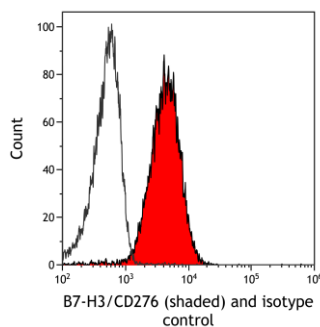
Sample: FFPE section of prostate carcinoma. *Antibody:* Rabbit anti-B7-H3 recombinant monoclonal antibody [BLR025F] (A700-025). *Secondary:* HRP-conjugated goat anti-rabbit IgG (A120-501P).



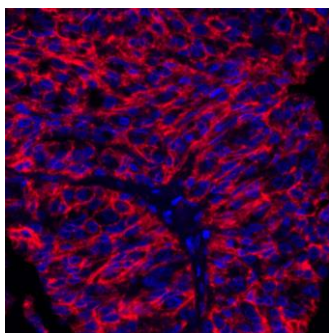
Detection of human B7-H3 by immunocytochemistry.
Sample: FFPE section of A-172 cells. *Antibody:* Rabbit anti-B7-H3 recombinant monoclonal antibody [BLR025F] (A700-025). *Secondary:* HRP-conjugated goat anti-rabbit IgG (A120-501P).



Detection of human B7-H3/CD276 (shaded) in HEK293T cells by flow cytometry. *Antibody:* Rabbit anti-B7-H3/CD276 recombinant monoclonal antibody [BLR025F] (A700-025) or isotype control (unshaded). *Secondary:* DyLight® 650-conjugated goat anti-rabbit IgG (A120-101D5).



Detection of mouse B7-H3/CD276 (shaded) in NIH3T3 cells by flow cytometry. *Antibody:* Rabbit anti-B7-H3/CD276 recombinant monoclonal antibody [BLR025F] (A700-025) or isotype control (unshaded). *Secondary:* DyLight® 650-conjugated goat anti-rabbit IgG (A120-101D5).



Detection of human B7-H3/CD276 (red) by immunohistochemistry. *Sample:* FFPE section of human lung carcinoma. *Antibody:* Rabbit anti-B7-H3/CD276 recombinant monoclonal antibody [BLR025F] (A700-025 lot 1) used at 1:250. *Secondary:* HRP-conjugated goat anti-rabbit IgG (A120-501P). *Substrate:* Opal™. *Counterstain:* DAPI (blue).