

# LAG3 Recombinant Monoclonal Antibody [BLR027F]

Rabbit Recombinant Monoclonal

Purified Protein ID NP\_002277.4  
Catalog No. A700-027 GeneID 3902  
Lot No. A700-027-2



**APPLICATIONS** WB, IP, IHC, ICC, IHC-IF, mIF  
**SPECIES REACTIVITY** Human  
**AMOUNT** 100 µl (50+ tests)  
**CONCENTRATION** 500 µg/ml  
**STORAGE/SHELF LIFE** 2 – 8° C / 1 year from date of receipt  
**PHYSICAL STATE** Liquid  
**BUFFER** Borate Buffered Saline (BBS) pH 8.2 with 0.1% BSA and 0.09% Sodium Azide  
**ISOTYPE** IgG  
**CLONE #** BLR027F  
**ORIGIN** USA  
**PRODUCTION PROCEDURES** Recombinant antibody was purified from cell culture supernatant.

Immunogen was a peptide representing a region between residue 500 to 525 of human lymphocyte activation gene 3 protein (LAG3) using the numbering given in entry NP\_002277.4 (GeneID 3902).

**APPLICATIONS** Centrifuge tube to remove product from lid. Optimal working dilutions should be determined experimentally by the investigator. Prepare working dilution immediately before use.

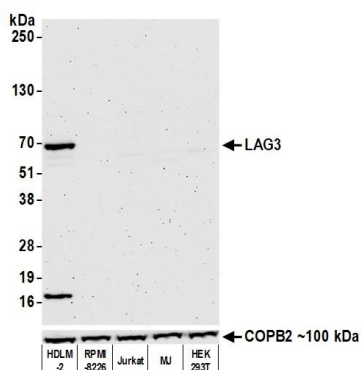
Western Blot	1:1000
Immunoprecipitation	12 µl/0.5 mg lysate
Immunohistochemistry	1:100 to 1:500. Epitope retrieval with citrate buffer pH6.0 is recommended for FFPE tissue sections.
Immunocytochemistry	1:100 to 1:500. Epitope retrieval with citrate buffer pH6.0 is recommended for FFPE cell sections.
Immunofluorescence (IHC)	1:100 to 1:500. Epitope retrieval with citrate buffer pH6.0 is recommended for FFPE tissue sections.
Multiplex Immunofluorescence	1:250

**IHC HUMAN CONTROLS** Head and Neck Squamous Cell Carcinoma, Kidney, Lung Carcinoma, Tonsil, HDLM-2 Cells, RPMI-8226 Cells

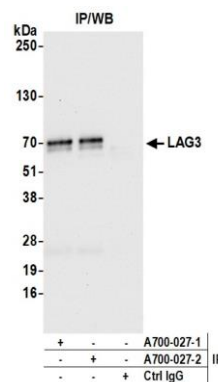
**ADDITIONAL INFO** <https://www.bethyl.com/product/A700-027>

Use the link above to view SDS, a current list of citations, and other product specific information.

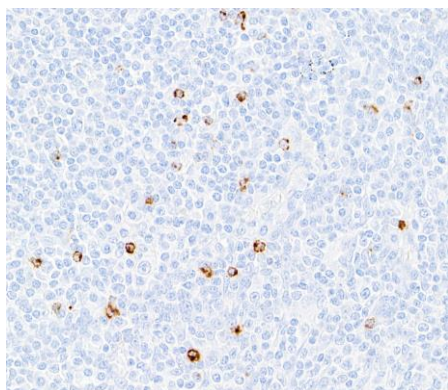
This document certifies that this product has met all of the quality control standards defined by Bethyl Laboratories, Inc.  
Brian McWilliams, PhD Date: December 29, 2020



**Detection of human LAG3 by western blot.** *Samples:* Whole cell lysate (50  $\mu$ g) from HDLM-2, RPMI-8226, Jurkat, MJ, and HEK293T cells prepared using NETN lysis buffer. *Antibody:* Rabbit anti-LAG3 recombinant monoclonal antibody [BLR027F] (A700-027 lot 2) used at 1:1000. *Secondary:* HRP-conjugated goat anti-rabbit IgG (A120-101P). Chemiluminescence with an exposure time of 3 minutes. Lower Panel: Rabbit anti-COPB2 antibody (A304-523A).



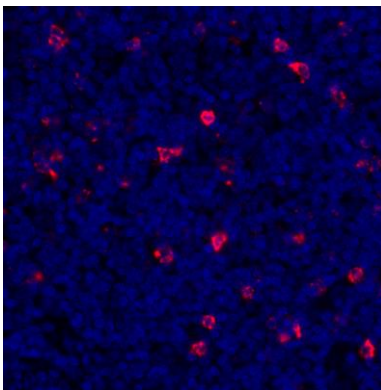
**Detection of human LAG3 by western blot of immunoprecipitates.** *Samples:* Whole cell lysate (1.0 mg per IP reaction; 20% of IP loaded) from HDLM-2 cells prepared using NETN lysis buffer. *Antibodies:* Rabbit anti-LAG3 recombinant monoclonal antibody [BLR027F] (A700-027 lot 2) used for IP at 12  $\mu$ l per reaction. LAG3 was also immunoprecipitated by a previous lot of this antibody (lot A700-027-1). For blotting immunoprecipitated LAG3, A700-027 was used at 1:1000. Chemiluminescence with an exposure time of 10 seconds.



**Detection of human LAG3 in FFPE tonsil by immunohistochemistry.** *Antibody:* Rabbit anti-LAG3 recombinant monoclonal antibody [BLR027F] (A700-027 lot 2). *Secondary:* HRP-conjugated goat anti-rabbit IgG (A120-501P). *Substrate:* DAB.



**Detection of human LAG3 in FFPE HDLM-2 by immunocytochemistry.** *Antibody:* Rabbit anti-LAG3 recombinant monoclonal antibody [BLR027F] (A700-027 lot 2). *Secondary:* HRP-conjugated goat anti-rabbit IgG (A120-501P). *Substrate:* DAB.



**Detection of human LAG3 (red) by immunohistochemistry.** *Sample:* FFPE section of human tonsil. *Antibody:* Rabbit anti-LAG3 recombinant monoclonal antibody [BLR027F] (A700-027 lot 1) used at 1:250. *Secondary:* HRP-conjugated goat anti-rabbit IgG (A120-501P). *Substrate:* Opal™. *Counterstain:* DAPI (blue).