

LAG3 Recombinant Monoclonal Antibody [BLR028F]

Rabbit Recombinant Monoclonal

| | | |
|------------------------|------------|-------------|
| Purified | Protein ID | NP_002277.4 |
| Catalog No. A700-028-T | GeneID | 3902 |
| Lot No. A700-028-T-2 | | |

APPLICATIONS WB, IP, IHC, ICC, IHC-IF

SPECIES REACTIVITY Human

AMOUNT 10 µl (5+ tests)

CONCENTRATION 1000 µg/ml

STORAGE/SHELF LIFE 2 – 8°C / 1 year from date of receipt

PHYSICAL STATE Liquid

BUFFER Borate Buffered Saline (BBS) pH 8.2 with 0.09% Sodium Azide, BSA Free

ISOTYPE IgG

CLONE # BLR028F

ORIGIN USA

PRODUCTION PROCEDURES Recombinant antibody was purified from cell culture supernatant.

Immunogen was a recombinant protein representing the extracellular domain of human Lymphocyte activation gene 3 (LAG3, residues 23–450, NP_002277.4).

APPLICATIONS Centrifuge tube to remove product from lid. Optimal working dilutions should be determined experimentally by the investigator. Prepare working dilution immediately before use.

Western Blot 1:1000

Immunoprecipitation 6 µl/0.5 mg lysate

Immunohistochemistry 1:100 to 1:500. Epitope retrieval with citrate buffer pH6.0 is recommended for FFPE tissue sections.

Immunocytochemistry 1:100 to 1:500. Epitope retrieval with citrate buffer pH6.0 is recommended for FFPE cell sections.

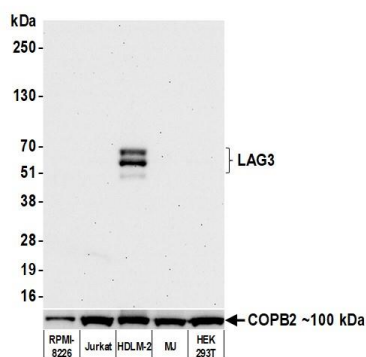
Immunofluorescence (IHC) 1:100 to 1:500. Epitope retrieval with citrate buffer pH6.0 is recommended for FFPE tissue sections.

IHC HUMAN CONTROLS Lung Carcinoma, Tonsil, HDLM-2 Cells

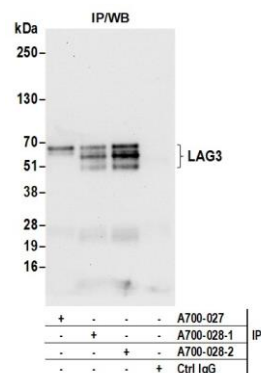
ADDITIONAL INFO <https://www.bethyl.com/product/A700-028-T>

Use the link above to view SDS, a current list of citations, and other product specific information.

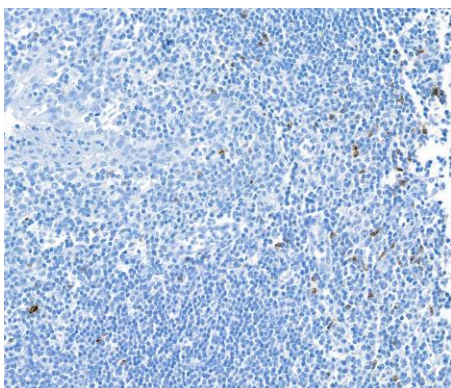
This document certifies that this product has met all of the quality control standards defined by Bethyl Laboratories, Inc.
Michael Spencer, PhD Date: April 25, 2022



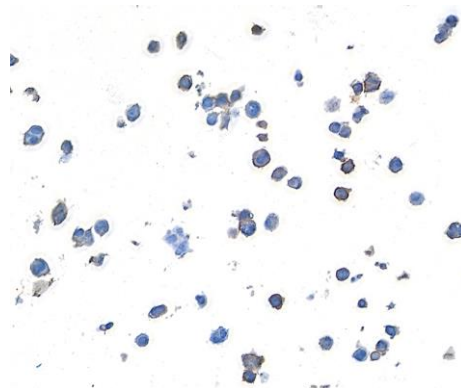
Detection of human LAG3 by western blot. *Samples:* Whole cell lysate (50 µg) from RPMI-8226, Jurkat, HDLM-2, MJ, and HEK293T cells prepared using NETN lysis buffer. *Antibody:* Rabbit anti-LAG3 recombinant monoclonal antibody [BLR028F] (A700-028 lot 2) used at 1:1000. *Secondary:* HRP-conjugated goat anti-rabbit IgG (A120-101P). Chemiluminescence with an exposure time of 30 seconds.



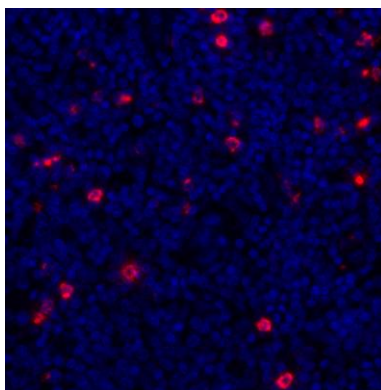
Detection of human LAG3 by western blot of immunoprecipitates. *Samples:* Whole cell lysate (1.0 mg per IP reaction; 20% of IP loaded) from HDLM-2 cells prepared using NETN lysis buffer. *Antibodies:* Rabbit anti-LAG3 recombinant monoclonal antibody [BLR028F] (A700-028 lot 2) used for IP at 20 µl/mg lysate. LAG3 was also immunoprecipitated by a previous lot of this antibody (A700-028 lot 1) and a second antibody against a different epitope of LAG3 (A700-027). For blotting immunoprecipitated LAG3, A700-028 was used at 1:1000. Chemiluminescence with an exposure time of 10 seconds.



Detection of human LAG3 by immunohistochemistry. *Sample:* FFPE section of tonsil. *Antibody:* Rabbit anti-LAG3 recombinant monoclonal antibody [BLR028F] (A700-028 lot 2). *Secondary:* HRP-conjugated goat anti-rabbit IgG (A120-501P).



Detection of human LAG3 by immunocytochemistry. *Sample:* FFPE section of HDLM-2 cells. *Antibody:* Rabbit anti-LAG3 recombinant monoclonal antibody [BLR028F] (A700-028 lot 2). *Secondary:* HRP-conjugated goat anti-rabbit IgG (A120-501P).



Detection of human LAG3 (red) by immunohistochemistry. *Sample:* FFPE section of human tonsil. *Antibody:* Rabbit anti-LAG3 recombinant monoclonal antibody [BLR028F] (A700-028-T lot 1) used at 1:250. *Secondary:* HRP-conjugated goat anti-rabbit IgG (A120-501P). *Substrate:* Opal™. *Counterstain:* DAPI (blue).