

# CD86 Recombinant Monoclonal Antibody [BLR030F]

Rabbit Recombinant Monoclonal

|             |          |            |             |
|-------------|----------|------------|-------------|
| Purified    |          | RefSeq ID  | NP_787058.4 |
| Catalog No. | A700-030 | Uniprot ID | P42081      |
| Lot No.     | 4        | GeneID     | 942         |

---

|                              |   |
|------------------------------|---|
| <b>APPLICATIONS</b>          | WB, IP, IHC, ICC, Flow Cyt  |
| <b>SPECIES REACTIVITY</b>    | Human   |
| <b>AMOUNT</b>                | 100 µl (50+ tests)  |
| <b>CONCENTRATION</b>         | 1000 µg/ml  |
| <b>STORAGE/SHELF LIFE</b>    | 2 – 8°C / 1 year from date of receipt                             |
| <b>PHYSICAL STATE</b>        | Liquid  |
| <b>BUFFER</b>                | Phosphate Buffered Saline (PBS) with 0.09% Sodium Azide, BSA-Free |
| <b>ISOTYPE</b>               | IgG   |
| <b>CLONE #</b>               | BLR030F   |
| <b>ORIGIN</b>                | USA   |
| <b>PRODUCTION PROCEDURES</b> | Recombinant antibody was purified from cell culture supernatant.  |

Immunogen was a peptide representing a region between residue 300 and the C-terminus (residue 329) of human CD86 molecule using the numbering given in entry NP\_787058.4 (GeneID 942).

**APPLICATIONS** Centrifuge tube to remove product from lid. Optimal working dilutions should be determined experimentally by the investigator. Prepare working dilution immediately before use.

|                      |  |
|----------------------|--|
| Western Blot         | 1:1000   |
| Immunoprecipitation  | 6 µl/mg lysate   |
| Immunohistochemistry | 1:100 to 1:500. Epitope retrieval with citrate buffer pH6.0 is recommended for FFPE tissue sections. |
| Immunocytochemistry  | 1:100 to 1:500. Epitope retrieval with citrate buffer pH6.0 is recommended for FFPE cell sections.   |
| Flow Cytometry       | Fixed and permeabilized cells were stained with 0.2 µl per 1 x 10 <sup>6</sup> cells.                |

**APPLICATION NOTES** All western blot analysis is performed using 5% Milk-TBST for blocking and as antibody diluent. Primary antibody is incubated overnight.

Western blots of cell lysates are performed using Goat anti-Rabbit IgG Heavy and Light Chain Antibody (Cat. No. A120-101P).

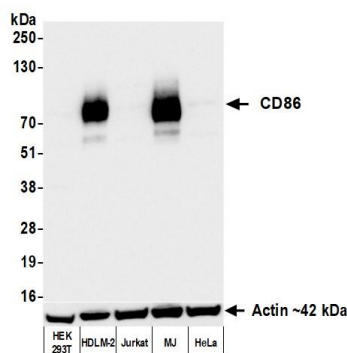
Western blots of immunoprecipitates are performed using Goat anti-Rabbit Light Chain HRP Conjugate (Cat. No. A120-113P) with 5% Normal Pig Serum (Cat. No. S100-020) added to the blocking buffer.

**IHC HUMAN CONTROLS** Seminoma, Tonsil, HDLM-2 Cells

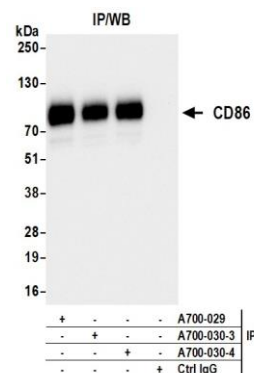
**ADDITIONAL INFO** <https://www.fortislife.com/p/A700-030>

Use the link above to view SDS, a current list of citations, and other product specific information.

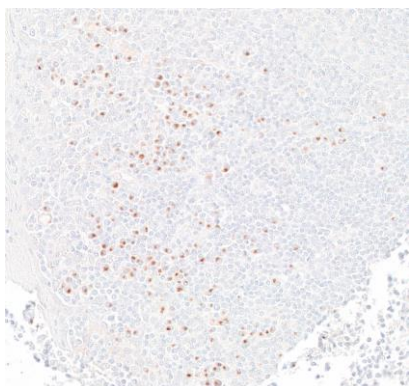
This document certifies that this product has met all of the quality control standards defined by Bethyl Laboratories, Inc.  
Michael Spencer, PhD Date: March 4, 2024



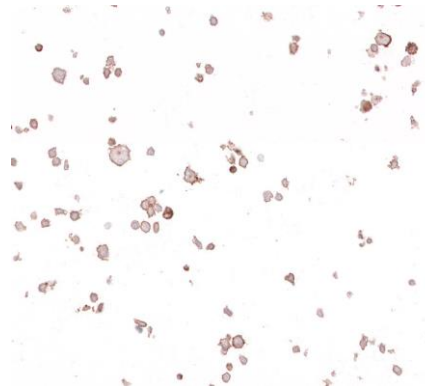
**Detection of human CD86 by western blot.** *Samples:* Whole cell lysate (10 µg) from HEK293T, HDLM-2, Jurkat, MJ, and HeLa cells prepared using NETN lysis buffer. *Antibody:* Rabbit anti-CD86 recombinant monoclonal antibody [BLR030F] (A700-030 lot 4) used at 1:1000. *Secondary:* HRP-conjugated goat anti-rabbit IgG (A120-101P). *Detection:* Chemiluminescence with an exposure time of 10 seconds.



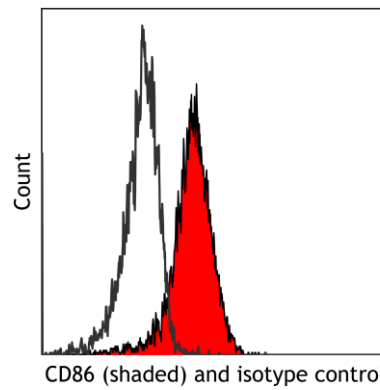
**Detection of human CD86 by western blot of immunoprecipitates.** *Samples:* Whole cell lysate (1 mg per IP; 10% of IP loaded) from HDLM-2 cells prepared using NETN lysis buffer. *Antibodies:* Rabbit anti-CD86 recombinant monoclonal antibody [BLR030F] (A700-030 lot 4) used for IP at 6 µl per reaction. CD86 was also immunoprecipitated by a previous lot of this antibody (A700-030 lot 1) and a second antibody against a different epitope of CD86 [BLR029F](A700-029). For blotting immunoprecipitated CD86, A700-030 was used at 1:1000. *Detection:* Chemiluminescence with an exposure time of 1 second.



**Detection of CD86 by immunohistochemistry.** *Sample:* FFPE section of tonsil. *Antibody:* Rabbit anti-CD86 recombinant monoclonal antibody [BLR030F] (A700-030 lot 4). *Secondary:* HRP-conjugated goat anti-rabbit IgG (A120-501P),



**Detection of CD86 by immunocytochemistry.** *Sample:* FFPE section of HDLM-2 cells. *Antibody:* Rabbit anti-CD86 recombinant monoclonal antibody [BLR030F] (A700-030 lot 4). *Secondary:* HRP-conjugated goat anti-rabbit IgG (A120-501P),



**Detection of human CD86 (shaded) in MJ[G11] cells by flow cytometry.** *Antibody:* Rabbit anti-CD86 recombinant monoclonal [BLR030F] (A700-030 lot 1) or isotype control (unshaded). *Secondary:* DyLight® 488-conjugated goat anti-rabbit IgG (A120-101D2).