

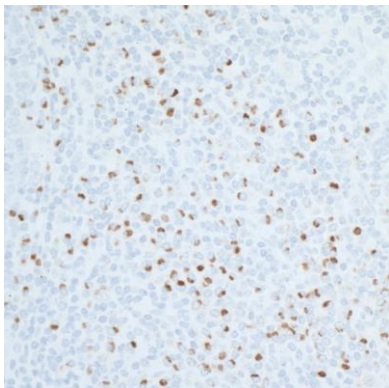
CD86 Recombinant Monoclonal Antibody [BLR030F]

Rabbit Recombinant Monoclonal

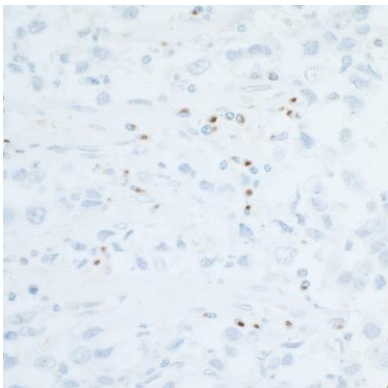
Purified	Protein ID	NP_787058.4
Catalog No. A700-030-T	GeneID	942
Lot No. A700-030-T-3		

APPLICATIONS	WB, IP, IHC, ICC, Flow Cyt
SPECIES REACTIVITY	Human
AMOUNT	10 µl (5+ tests)
CONCENTRATION	1000 µg/ml
STORAGE/SHELF LIFE	2 – 8°C / 1 year from date of receipt
PHYSICAL STATE	Liquid
BUFFER	Borate Buffered Saline (BBS) pH 8.2 with 0.09% Sodium Azide, BSA Free
ISOTYPE	IgG
CLONE #	BLR030F
ORIGIN	USA
PRODUCTION PROCEDURES	Recombinant antibody was purified from cell culture supernatant. Immunogen was a peptide representing a region between residue 300 and the C-terminus (residue 329) of human CD86 molecule using the numbering given in entry NP_787058.4 (GeneID 942).
APPLICATIONS	Centrifuge tube to remove product from lid. Optimal working dilutions should be determined experimentally by the investigator. Prepare working dilution immediately before use. Western Blot 1:1000 Immunoprecipitation 6 µl/mg lysate Immunohistochemistry 1:100 to 1:500. Epitope retrieval with citrate buffer pH6.0 is recommended for FFPE tissue sections. Immunocytochemistry 1:100 to 1:500. Epitope retrieval with citrate buffer pH6.0 is recommended for FFPE cell sections. Flow Cytometry Fixed and permeabilized cells were stained with 0.2 µl per 1 x 10 ⁶ cells.
IHC HUMAN CONTROLS	Seminoma, Tonsil, HDLM-2 Cells
ADDITIONAL INFO	https://www.fortislifesciences.com/p/A700-030-T Use the link above to view SDS, a current list of citations, and other product specific information.

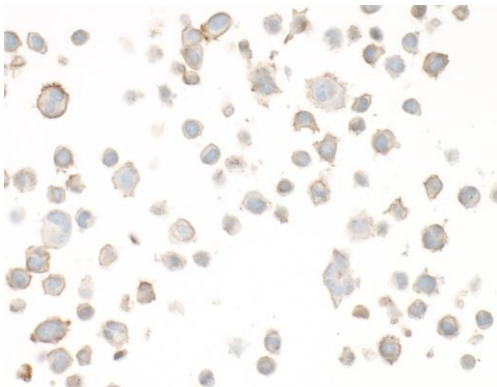
This document certifies that this product has met all of the quality control standards defined by Bethyl Laboratories, Inc.
Michael Spencer, PhD Date: August 5, 2022



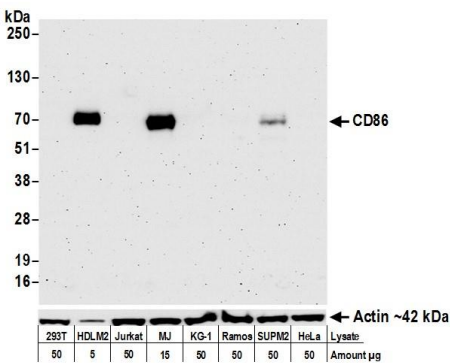
Detection of human CD86 in FFPE tonsil by IHC. *Antibody:* Rabbit anti-CD86 recombinant monoclonal antibody [BLR030F] (A700-030-T lot 3). *Secondary:* HRP-conjugated goat anti-rabbit IgG (A120-501P). *Substrate:* DAB.



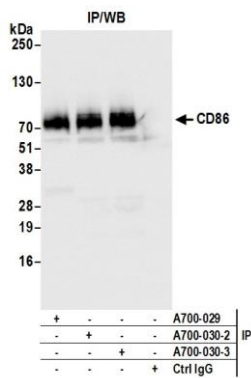
Detection of human CD86 in FFPE seminoma by IHC. *Antibody:* Rabbit anti-CD86 recombinant monoclonal antibody [BLR030F] (A700-030-T lot 3). *Secondary:* HRP-conjugated goat anti-rabbit IgG (A120-501P). *Substrate:* DAB.



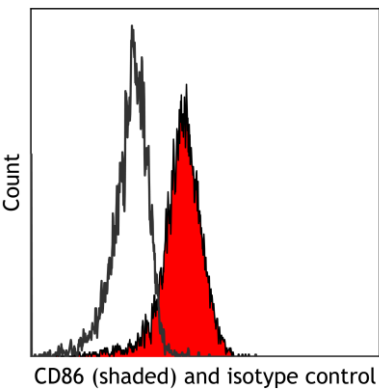
Detection of human CD86 in FFPE HDLM-2 by ICC. *Antibody:* Rabbit anti-CD86 recombinant monoclonal antibody [BLR030F] (A700-030-T lot 3). *Secondary:* HRP-conjugated goat anti-rabbit IgG (A120-501P). *Substrate:* DAB.



Detection of human CD86 by western blot. *Samples:* Whole cell lysate (5, 15 or 50 µg) from HEK293T, HDLM-2, Jurkat, MJ, KG-1, Ramos, SUP-M2, and HeLa cells prepared using NETN lysis buffer. *Antibody:* Rabbit anti-CD86 recombinant monoclonal antibody [BLR030F] (A700-030-T lot 3) used at 1:1000. *Secondary:* HRP-conjugated goat anti-rabbit IgG (A120-101P). Chemiluminescence with an exposure time of 3 minutes. Lower Panel: Rabbit anti-Actin recombinant monoclonal antibody [BLR059F] (A700-059) .



Detection of human CD86 by western blot of immunoprecipitates. *Samples:* Whole cell lysate (1.0 mg per IP reaction; 20% of IP loaded) from HDLM-2 cells prepared using NETN lysis buffer. *Antibodies:* Rabbit anti-CD86 recombinant monoclonal antibody [BLR030F] (A700-030-T lot 3) used for IP at 6 µl per reaction. CD86 was also immunoprecipitated by a previous lot of this antibody (lot A700-030-T-2) and rabbit anti-CD86 recombinant monoclonal antibody [BLR029F] (A700-029-T). For blotting immunoprecipitated CD86, A700-030-T was used at 1:1000. Chemiluminescence with an exposure time of 1 second.



Detection of human CD86 (shaded) in MJ[G11] cells by flow cytometry. *Antibody:* Rabbit anti-CD86 recombinant monoclonal [BLR030F] (A700-030-T lot 1) or isotype control (unshaded). *Secondary:* DyLight® 488-conjugated goat anti-rabbit IgG (A120-101D2).