

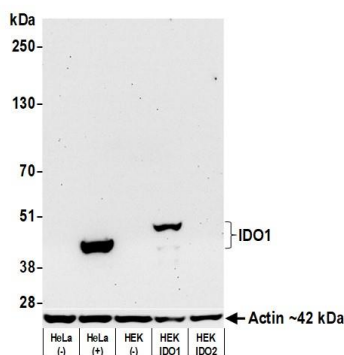
IDO1 Recombinant Monoclonal Antibody [BLR031F]

Rabbit Recombinant Monoclonal

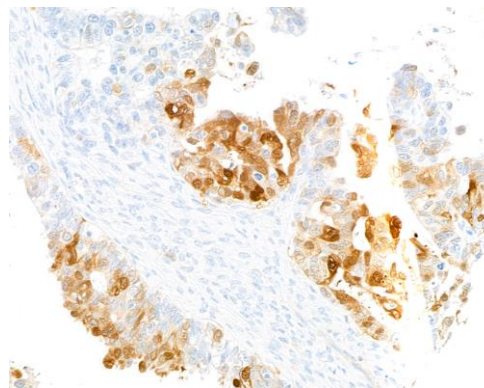
Purified		RefSeq ID	NP_002155.1
Catalog No.	A700-031	Uniprot ID	P14902
Lot No.	A700-031-2	GeneID	3620

APPLICATIONS	WB, IHC, ICC, IHC-IF
SPECIES REACTIVITY	Human
AMOUNT	100 µl (50+ tests)
CONCENTRATION	50 µg/ml
STORAGE/SHELF LIFE	2 – 8°C / 1 year from date of receipt
PHYSICAL STATE	Liquid
BUFFER	Borate Buffered Saline (BBS) pH 8.2 with 0.1% BSA and 0.09% Sodium Azide
ISOTYPE	IgG
CLONE #	BLR031F
ORIGIN	USA
PRODUCTION PROCEDURES	Recombinant antibody was purified from cell culture supernatant. Immunogen was a recombinant protein representing human Indoleamine 2,3-dioxygenase 1 (IDO1, residues 1–403, NP_002155.1).
APPLICATIONS	Centrifuge tube to remove product from lid. Optimal working dilutions should be determined experimentally by the investigator. Prepare working dilution immediately before use. Western Blot 1:1000 Immunohistochemistry 1:100 to 1:500. Epitope retrieval with citrate buffer pH6.0 is recommended for FFPE tissue sections. Immunocytochemistry 1:100 to 1:500. Epitope retrieval with citrate buffer pH6.0 is recommended for FFPE cell sections. Immunofluorescence (IHC) 1:100 to 1:500. Epitope retrieval with citrate buffer pH6.0 is recommended for FFPE tissue sections.
IHC HUMAN CONTROLS	Colon Carcinoma, Lung Carcinoma, Ovarian Carcinoma, Tonsil, A-549 Cells
ADDITIONAL INFO	https://www.fortislife.com/p/A700-031 Use the link above to view SDS, a current list of citations, and other product specific information.

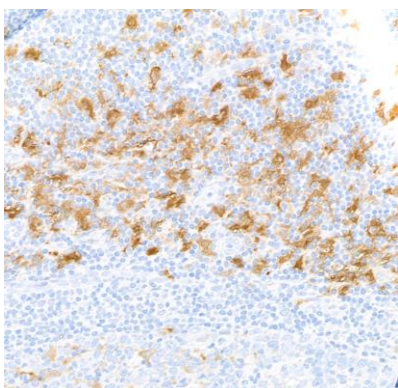
This document certifies that this product has met all of the quality control standards defined by Bethyl Laboratories, Inc.
Michael Spencer, PhD Date: November 15, 2022



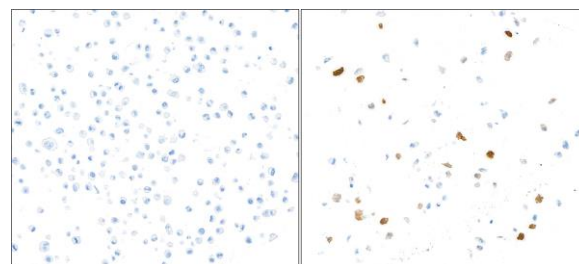
Detection of human IDO1 by western blot. *Samples:* Whole cell lysate (50 µg) from HeLa treated with IFN- γ (+) or mock treated (-), untransfected HEK, IDO1 over-expressing HEK, and IDO2 over-expressing HEK cells prepared using NETN lysis buffer. *Antibody:* Rabbit anti-IDO1 recombinant monoclonal antibody [BLR031F] (A700-031 lot 2) used at 1:1000. *Secondary:* HRP-conjugated goat anti-rabbit IgG (A120-101P). Chemiluminescence with an exposure time of 30 seconds. Lower Panel: Rabbit anti-Actin recombinant monoclonal antibody [BLR057F] (A700-057).



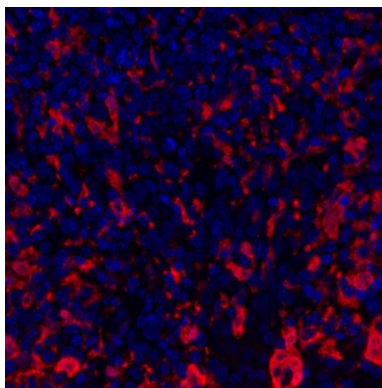
Detection of human IDO1 by immunohistochemistry. *Sample:* FFPE section of human ovarian carcinoma. *Antibody:* Rabbit anti-IDO1 recombinant monoclonal antibody [BLR031F] (A700-031 lot 2). *Secondary:* HRP-conjugated goat anti-rabbit IgG (A120-501P).



Detection of human IDO1 by immunohistochemistry. *Sample:* FFPE section of human tonsil. *Antibody:* Rabbit anti-IDO1 recombinant monoclonal antibody [BLR031F] (A700-031 lot 2). *Secondary:* HRP-conjugated goat anti-rabbit IgG (A120-501P).



Detection of human IDO1 by immunocytochemistry. *Sample:* FFPE sections of untreated A549 cells (left) and INF- γ treated A549 cells (right). *Antibody:* Rabbit anti-IDO1 recombinant monoclonal antibody [BLR031F] (A700-031 lot 2). *Secondary:* HRP-conjugated goat anti-rabbit IgG (A120-501P).

**Detection of human IDO1 (red) by immunohistochemistry.**

Sample: FFPE section of human skin carcinoma. *Antibody:*

Rabbit anti-IDO1 recombinant monoclonal antibody [BLR031F] (A700-031 lot 1) used at 1:250. *Secondary:*

HRP-conjugated goat anti-rabbit IgG (A120-501P).

Substrate: Opal™. *Counterstain:* DAPI (blue).