

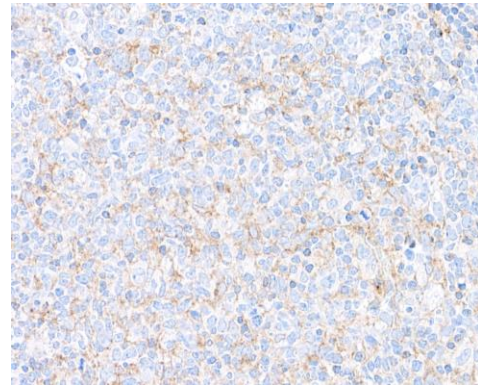
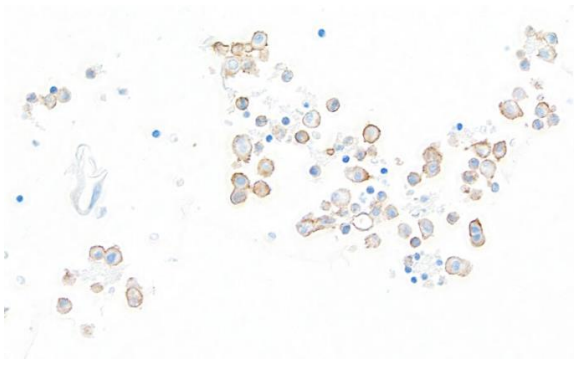
TIM3 Recombinant Monoclonal Antibody [BLR033F]

Rabbit Recombinant Monoclonal

Purified	Protein ID	NP_116171.3
Catalog No. A700-033-T	GeneID	84868
Lot No. A700-033-T-2		

APPLICATIONS	WB, IHC, ICC, IHC-IF
SPECIES REACTIVITY	Human
AMOUNT	10 µl (5+ tests)
CONCENTRATION	1000 µg/ml
STORAGE/SHELF LIFE	2 – 8° C / 1 year from date of receipt
PHYSICAL STATE	Liquid
BUFFER	Borate Buffered Saline (BBS) pH 8.2 with 0.09% Sodium Azide, BSA Free
ISOTYPE	IgG
CLONE #	BLR033F
ORIGIN	USA
PRODUCTION PROCEDURES	Recombinant antibody was purified from cell culture supernatant. Immunogen was a recombinant protein representing the extracellular domain of human TIM3 (HAVCR2) (residues 22–201, NP_116171.3).
APPLICATIONS	Centrifuge tube to remove product from lid. Optimal working dilutions should be determined experimentally by the investigator. Prepare working dilution immediately before use. Western Blot 1:1000 Immunohistochemistry 1:100 to 1:500. Epitope retrieval with citrate buffer pH6.0 is recommended for FFPE tissue sections. Immunocytochemistry 1:100 to 1:500. Epitope retrieval with citrate buffer pH6.0 is recommended for FFPE cell sections. Immunofluorescence (IHC) 1:100 to 1:500. Epitope retrieval with citrate buffer pH6.0 is recommended for FFPE tissue sections.
IHC HUMAN CONTROLS	Colon Carcinoma, Lung Carcinoma, Ovarian Carcinoma, Renal Cell Carcinoma, Tonsil, RPMI-8226 Cells, SiHa cells
ADDITIONAL INFO	https://www.bethyl.com/product/A700-033-T Use the link above to view SDS, a current list of citations, and other product specific information.

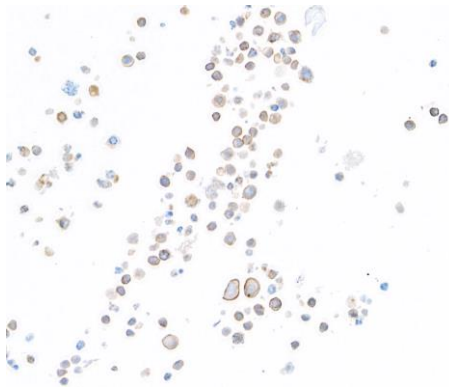
This document certifies that this product has met all of the quality control standards defined by Bethyl Laboratories, Inc.
Michael Spencer, PhD Date: October 7, 2021

**Detection of human TIM3 by immunohistochemistry.**

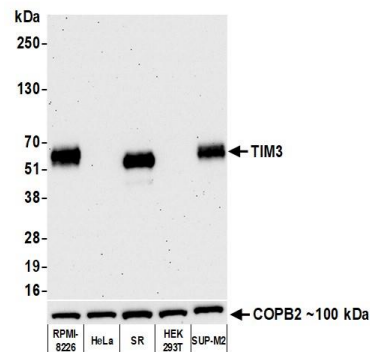
Sample: FFPE section of pleural effusion lung carcinoma. *Antibody:* Rabbit anti-TIM3 recombinant monoclonal antibody [BLR033F] (A700-033-T lot 2) used at 1:200. *Secondary:* HRP-conjugated goat anti-rabbit IgG (A120-501P). *Substrate:* DAB.

Detection of human TIM3 by immunohistochemistry.

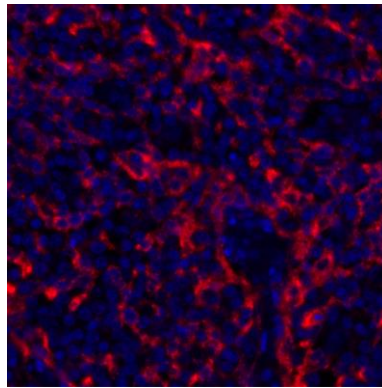
Sample: FFPE section of human tonsil. *Antibody:* Rabbit anti-TIM3 recombinant monoclonal antibody [BLR033F] (A700-033-T lot 2) used at 1:200. *Secondary:* HRP-conjugated goat anti-rabbit IgG (A120-501P). *Substrate:* DAB.

**Detection of human TIM3 by immunocytochemistry.**

Sample: FFPE section of RPMI-8226 cells. *Antibody:* Rabbit anti-TIM3 recombinant monoclonal antibody [BLR033F] (A700-033-T lot 2) used at 1:200. *Secondary:* HRP-conjugated goat anti-rabbit IgG (A120-501P). *Substrate:* DAB.

**Detection of human TIM3 by western blot.**

Samples: Whole cell lysate (10 µg) from RPMI-8226, HeLa, SR, HEK293T, and SUP-M2 cells prepared using NETN lysis buffer. *Antibody:* Rabbit anti-TIM3 recombinant monoclonal antibody [BL-347-6E6] (A700-033-T lot 2) used at 1:1000. *Secondary:* HRP-conjugated goat anti-rabbit IgG (A120-101P). Chemiluminescence with an exposure time of 75 seconds. Lower Panel: Rabbit anti-COPB2 antibody (A304-523A).

**Detection of human TIM3 (red) by immunohistochemistry.**

Sample: FFPE section of human tonsil. *Antibody:* Rabbit anti-TIM3 recombinant monoclonal antibody [BLR033F] (A700-033-T lot 1) used at 1:250. *Secondary:* HRP-conjugated goat anti-rabbit IgG (A120-501P). *Substrate:* Opal™. *Counterstain:* DAPI (blue).