

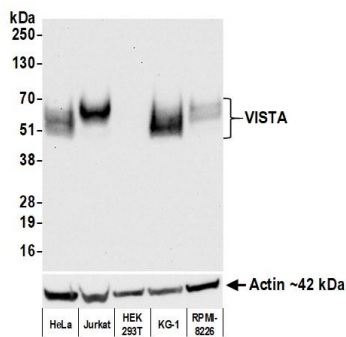
VISTA Recombinant Monoclonal Antibody [BLR035F]

Rabbit Recombinant Monoclonal

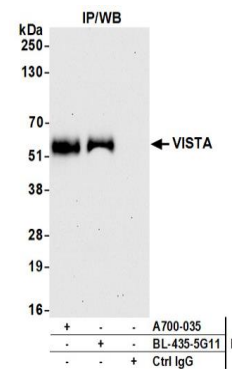
Purified Protein ID NP_071436.1
Catalog No. A700-035 GenelD 64115
Lot No. A700-035-2

| | |
|------------------------------|---|
| APPLICATIONS | WB, IP, IHC, ICC, IHC-IF, Flow Cyt |
| SPECIES REACTIVITY | Human |
| AMOUNT | 100 µl (50+ tests) |
| CONCENTRATION | 100 µg/ml |
| STORAGE/SHELF LIFE | 2 – 8°C / 1 year from date of receipt |
| PHYSICAL STATE | Liquid |
| BUFFER | Borate Buffered Saline (BBS) pH 8.2 with 0.1% BSA and 0.09% Sodium Azide |
| ISOTYPE | IgG |
| CLONE # | BLR035F |
| ORIGIN | USA |
| PRODUCTION PROCEDURES | Recombinant antibody was purified from cell culture supernatant. Immunogen was a peptide representing a region between residue 250 and the C-terminus (residue 311) of human V-type immunoglobulin domain-containing suppressor of T-cell activation precursor using the numbering given in entry NP_071436.1 (Gene ID 64115). |
| APPLICATIONS | Centrifuge tube to remove product from lid. Optimal working dilutions should be determined experimentally by the investigator. Prepare working dilution immediately before use. Western Blot 1:1000 Immunoprecipitation 20 ul/1mg lysate Immunohistochemistry 1:100 – 1:500. Epitope retrieval with citrate buffer pH6.0 is recommended for FFPE tissue sections. Immunocytochemistry 1:100 to 1:500. Epitope retrieval with citrate buffer pH6.0 is recommended for FFPE cell sections. Immunofluorescence (IHC) 1:100 to 1:500. Epitope retrieval with citrate buffer pH6.0 is recommended for FFPE tissue sections. Flow Cytometry Fixed in 4% formaldehyde and permeabilized with 90% methanol. 2 µl per 1 x 10 ⁶ cells. |
| IHC HUMAN CONTROLS | Colon Carcinoma, Lung Carcinoma, Placenta, NCI-H226 Cells |
| ADDITIONAL INFO | https://www.fortislifesciences.com/p/A700-035 Use the link above to view SDS, a current list of citations, and other product specific information. |

This document certifies that this product has met all of the quality control standards defined by Bethyl Laboratories, Inc.
Michael Spencer, PhD Date: August 5, 2022



Detection of human VISTA by western blot. *Samples:* Whole cell lysate (50 μ g) from HeLa, Jurkat, HEK293T, KG-1, and RPMI-8226 cells prepared using NETN lysis buffer. *Antibody:* Rabbit anti-VISTA recombinant monoclonal antibody [BLR035F] (A700-035 lot 2) used at 1:1000. *Secondary:* HRP-conjugated goat anti-rabbit IgG (A120-101P). Chemiluminescence with an exposure time of 10 seconds. Lower Panel: Rabbit anti-Actin recombinant monoclonal antibody [BLR057F] (A700-057).



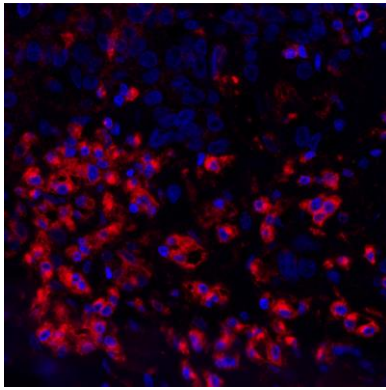
Detection of human VISTA by western blot of immunoprecipitates. *Samples:* Whole cell lysate (1.0 mg per IP reaction; 20% of IP loaded) from Jurkat cells prepared using NETN lysis buffer. *Antibodies:* Rabbit anti-VISTA recombinant monoclonal antibody [BLR035F] (A700-035 lot 2) used for IP at 10 μ l/mg lysate. VISTA was also immunoprecipitated by a second antibody against a different epitope of VISTA (BL-435-5G11). For blotting immunoprecipitated VISTA, A700-035 was used at 1:1000. Chemiluminescence with an exposure time of 30 seconds.

Detection of human VISTA by immunohistochemistry.

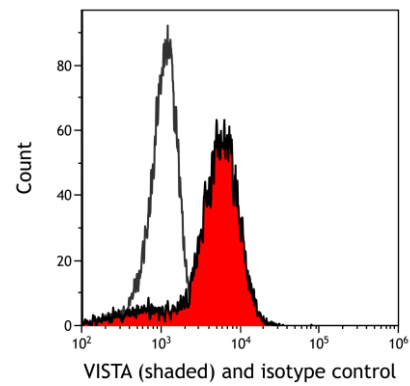
Sample: FFPE section of lung carcinoma. *Antibody:* Rabbit anti-VISTA recombinant monoclonal antibody [BLR035F] (A700-035 lot 2) used at 1:250. *Secondary:* HRP-conjugated goat anti-rabbit IgG (A120-501P).

Detection of human VISTA by immunocytochemistry.

Sample: FFPE section of NCI-H226 cells. *Antibody:* Rabbit anti-VISTA recombinant monoclonal antibody [BLR035F] (A700-035 lot 2) used at 1:250. *Secondary:* HRP-conjugated goat anti-rabbit IgG (A120-501P).



Detection of human VISTA (red) by immunohistochemistry. *Sample:* FFPE section of human ovarian carcinoma. *Antibody:* Rabbit anti-VISTA recombinant monoclonal antibody [BLR035F] (A700-035 lot 1) used at 1:250. *Secondary:* HRP-conjugated goat anti-rabbit IgG (A120-501P). *Substrate:* Opal™. *Counterstain:* DAPI (blue).



Detection of human VISTA in human peripheral blood mononuclear cells by flow cytometry. *Antibody:* Rabbit anti-VISTA recombinant monoclonal [BLR035F] (A700-035 lot 1) (right) or isotype control (left). *Secondary:* DyLight® 488-conjugated goat anti-rabbit IgG (A120-101D2).