

VISTA Recombinant Monoclonal Antibody [BLR035F]

Rabbit Recombinant Monoclonal

Purified		RefSeq ID	NP_071436.1
Catalog No.	A700-035-T	Uniprot ID	Q9H7M9
Lot No.	3	GeneID	64115

APPLICATIONS	WB, IP, IHC, ICC, IHC-IF, Flow Cyt
SPECIES REACTIVITY	Human
AMOUNT	10 µl (5+ tests)
CONCENTRATION	100 µg/ml
STORAGE/SHELF LIFE	2 – 8°C / 1 year from date of receipt
PHYSICAL STATE	Liquid
BUFFER	Borate Buffered Saline (BBS) pH 8.2 with 0.1% BSA and 0.09% Sodium Azide
ISOTYPE	IgG
CLONE #	BLR035F
ORIGIN	USA
PRODUCTION PROCEDURES	Recombinant antibody was purified from cell culture supernatant.

Immunogen was a peptide representing a region between residue 250 and the C-terminus (residue 311) of human V-type immunoglobulin domain-containing suppressor of T-cell activation precursor using the numbering given in entry NP_071436.1 (Gene ID 64115).

APPLICATIONS	Centrifuge tube to remove product from lid. Optimal working dilutions should be determined experimentally by the investigator. Prepare working dilution immediately before use.
	Western Blot 1:1000
	Immunoprecipitation 20 µl/mg lysate
	Immunohistochemistry 1:100 – 1:500. Epitope retrieval with citrate buffer pH6.0 is recommended for FFPE tissue sections.
	Immunocytochemistry 1:100 to 1:500. Epitope retrieval with citrate buffer pH6.0 is recommended for FFPE cell sections.
	Immunofluorescence (IHC) 1:100 to 1:500. Epitope retrieval with citrate buffer pH6.0 is recommended for FFPE tissue sections.
	Flow Cytometry Fixed in 4% formaldehyde and permeabilized with 90% methanol. 2 µl per 1 x 10 ⁶ cells.

APPLICATION NOTES All western blot analysis is performed using 5% Milk-TBST for blocking and as antibody diluent. Primary antibody is incubated overnight.

Western blots of cell lysates are performed using Goat anti-Rabbit IgG Heavy and Light Chain Antibody (Cat. No. A120-101P).

Western blots of immunoprecipitates are performed using Goat anti-Rabbit Light Chain HRP Conjugate (Cat. No. A120-113P) with 5% Normal Pig Serum (Cat. No. S100-020) added to the blocking buffer.

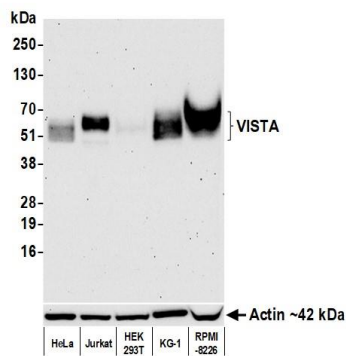
IHC HUMAN CONTROLS Colon Carcinoma, Lung Carcinoma, Placenta, NCI-H226 Cells

ADDITIONAL INFO <https://www.fortislife.com/p/A700-035-T>

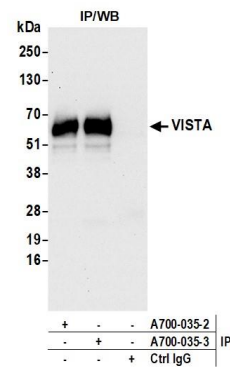
Use the link above to view SDS, a current list of citations, and other product specific information.

This document certifies that this product has met all of the quality control standards defined by Bethyl Laboratories, Inc.
Michael Spencer, PhD Date: February 8, 2024

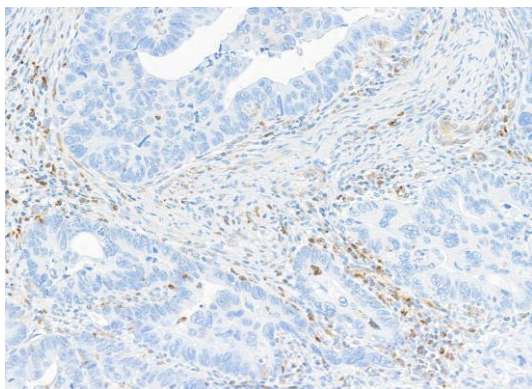
Phone: 800.338.9579 • Fax: 866.597.6105 • Web: www.fortislife.com
Orders: orders@fortislife.com • Support: technical@fortislife.com



Detection of human VISTA by western blot. *Samples:* Whole cell lysate (10 µg) from HeLa, Jurkat, HEK293T, KG-1, and RPMI-8226 cells prepared using NETN lysis buffer. *Antibody:* Rabbit anti-VISTA recombinant monoclonal antibody [BL-226-5C12] (A700-035 lot 3) used at 1:1000. *Secondary:* HRP-conjugated goat anti-rabbit IgG (A120-101P). Chemiluminescence with an exposure time of 75 seconds. Lower Panel: Rabbit anti-Actin recombinant monoclonal antibody [BLR057F] (A700-057).



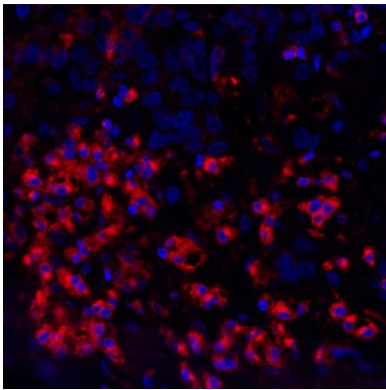
Detection of human VISTA by western blot of immunoprecipitates. *Samples:* Whole cell lysate (1.0 mg per IP reaction; 20% of IP loaded) from Jurkat cells prepared using NETN lysis buffer. *Antibodies:* Rabbit anti-VISTA recombinant monoclonal antibody [BL-226-5C12] (A700-035 lot 3) used for IP at 20 µl/mg lysate. VISTA was also immunoprecipitated by a previous lot of this antibody (A700-035 lot 2). For blotting immunoprecipitated VISTA, A700-035 was used at 1:1000. Chemiluminescence with an exposure time of 10 seconds.



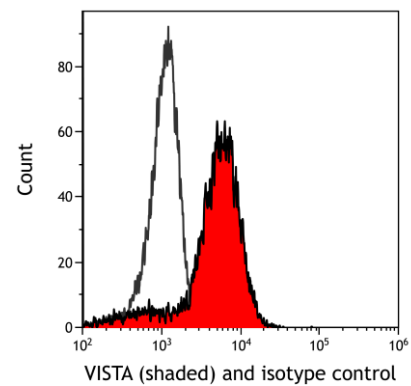
Detection of human VISTA by immunohistochemistry. *Sample:* FFPE section of colon carcinoma. *Antibody:* Rabbit anti-VISTA recombinant monoclonal antibody [BLR035F] (A700-035-3). *Secondary:* HRP-conjugated goat anti-rabbit IgG (A120-501P).



Detection of human VISTA by immunocytochemistry. *Sample:* FFPE section of NCI-H226 cells. *Antibody:* Rabbit anti-VISTA recombinant monoclonal antibody [BLR035F] (A700-035-3). *Secondary:* HRP-conjugated goat anti-rabbit IgG (A120-501P).



Detection of human VISTA (red) by immunohistochemistry. *Sample:* FFPE section of human ovarian carcinoma. *Antibody:* Rabbit anti-VISTA recombinant monoclonal antibody [BLR035F] (A700-035) used at 1:250. *Secondary:* HRP-conjugated goat anti-rabbit IgG (A120-501P). *Substrate:* Opal™. *Counterstain:* DAPI (blue).



Detection of human VISTA in human peripheral blood mononuclear cells by flow cytometry. *Antibody:* Rabbit anti-VISTA recombinant monoclonal [BLR035F] (A700-035) (right) or isotype control (left). *Secondary:* DyLight® 488-conjugated goat anti-rabbit IgG (A120-101D2).