

# Arginase 1 Recombinant Monoclonal Antibody [BLR036F]

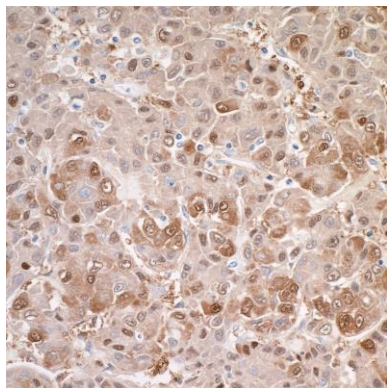
Rabbit Recombinant Monoclonal

Purified Protein ID NP\_001231367.1  
Catalog No. A700-036-T GeneID 383  
Lot No. A700-036-T-1

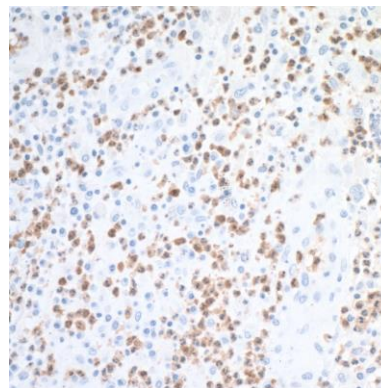


<b>APPLICATIONS</b>	WB, IP, IHC, ICC, IHC-IF
<b>SPECIES REACTIVITY</b>	Human
<b>AMOUNT</b>	10 µl (5+ tests)
<b>CONCENTRATION</b>	250 µg/ml
<b>STORAGE/SHELF LIFE</b>	2 – 8° C / 1 year from date of receipt
<b>PHYSICAL STATE</b>	Liquid
<b>BUFFER</b>	Borate Buffered Saline (BBS) pH 8.2 with 0.1% BSA and 0.09% Sodium Azide
<b>ISOTYPE</b>	IgG
<b>CLONE #</b>	BLR036F
<b>ORIGIN</b>	USA
<b>PRODUCTION PROCEDURES</b>	Recombinant antibody was purified from cell culture supernatant.  Immunogen was a recombinant protein representing full length arginase 1 (residues 10322, NP_000036.2).
<b>APPLICATIONS</b>	Centrifuge tube to remove product from lid. Optimal working dilutions should be determined experimentally by the investigator. Prepare working dilution immediately before use.  Western Blot 1:1000 Immunoprecipitation 20 ul/1 mg lysate Immunohistochemistry 1:100 to 1:500. Epitope retrieval with citrate buffer pH6.0 is recommended for FFPE tissue sections. Immunocytochemistry 1:100 to 1:500. Epitope retrieval with citrate buffer pH6.0 is recommended for FFPE cell sections. Immunofluorescence (IHC) 1:100 to 1:500. Epitope retrieval with citrate buffer pH6.0 is recommended for FFPE tissue sections.
<b>IHC HUMAN CONTROLS</b>	Liver, Liver Carcinoma, Skin, Hep-G2 Cells, HL-60 Cells
<b>ADDITIONAL INFO</b>	<a href="https://www.bethyl.com/product/A700-036-T">https://www.bethyl.com/product/A700-036-T</a> Use the link above to view SDS, a current list of citations, and other product specific information.

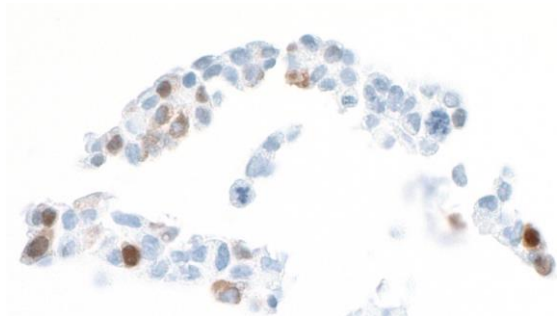
This document certifies that this product has met all of the quality control standards defined by Bethyl Laboratories, Inc.  
Eric McIntush, PhD | Chief Scientific Officer Date: September 23, 2019



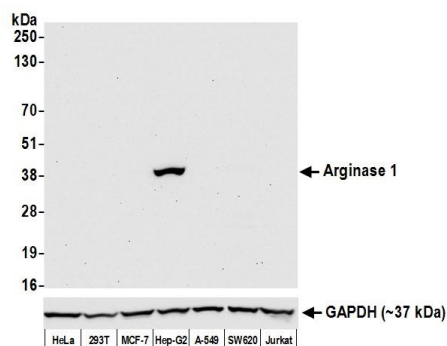
**Detection of human Arginase 1 by immunohistochemistry.** *Sample:* FFPE section of human liver carcinoma. *Antibody:* Rabbit anti-Arginase 1 recombinant monoclonal antibody [BLR036F] (A700-036-T lot 1) used at 1:250. *Secondary:* HRP-conjugated goat anti-rabbit IgG (A120-501P). *Substrate:* DAB.



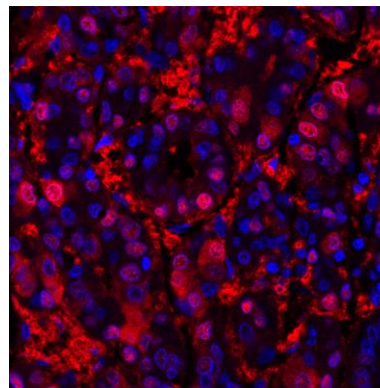
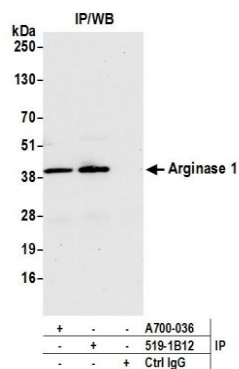
**Detection of human Arginase 1 by immunohistochemistry.** *Sample:* FFPE section of human skin. *Antibody:* Rabbit anti-Arginase 1 recombinant monoclonal antibody [BLR036F] (A700-036-T lot 1) used at 1:250. *Secondary:* HRP-conjugated goat anti-rabbit IgG (A120-501P). *Substrate:* DAB.



**Detection of human Arginase 1 by immunocytochemistry.** *Sample:* FFPE section of Hep-G2 cells. *Antibody:* Rabbit anti-Arginase 1 recombinant monoclonal antibody [BLR036F] (A700-036-T lot 1) used at 1:250. *Secondary:* HRP-conjugated goat anti-rabbit IgG (A120-501P). *Substrate:* DAB.



**Detection of human Arginase 1 by western blot.** *Samples:* Whole cell lysate (50 µg) from HeLa, HEK293T, MCF-7, Hep-G2, A-549, SW620, and Jurkat cells prepared using NETN lysis buffer. *Antibody:* Rabbit anti-Arginase 1 recombinant monoclonal antibody [BLR036F] (A700-036-T lot 1) used at 1:1000. *Secondary:* HRP-conjugated goat anti-rabbit IgG (A120-101P). Chemiluminescence with an exposure time of 30 seconds. Lower Panel: Rabbit anti-GAPDH (A300-639A).



**Detection of human Arginase 1 by western blot of immunoprecipitates.** *Samples:* Whole cell lysate (1.0 mg per IP reaction; 20% of IP loaded) from Hep-G2 cells prepared using NETN lysis buffer. *Antibodies:* Rabbit anti-Arginase 1 recombinant monoclonal antibody [BLR036F] (A700-036-T lot 1) used for IP at 20  $\mu$ l per reaction. Arginase 1 was also immunoprecipitated by rabbit anti-Arginase 1 recombinant monoclonal antibody [519-1B12]. For blotting immunoprecipitated Arginase 1, A700-036-T was used at 1:1000. Chemiluminescence with an exposure time of 10 seconds.

**Detection of human Arginase 1 (red) by immunohistochemistry.** *Sample:* FFPE section of human liver carcinoma. *Antibody:* Rabbit anti-Arginase 1 recombinant monoclonal antibody [BLR036F] (A700-036-T lot 1) used at 1:250. *Secondary:* HRP-conjugated goat anti-rabbit IgG (A120-501P). *Substrate:* Opal™. *Counterstain:* DAPI (blue).