

# MED1 Recombinant Monoclonal Antibody [BLR037F]

Rabbit Recombinant Monoclonal

Purified Protein ID NP\_004765.2  
Catalog No. A700-037-T GeneID 5469  
Lot No. A700-037-T-2



**APPLICATIONS** WB, IP, IHC, ICC  
**SPECIES REACTIVITY** Human, Mouse  
**AMOUNT** 20 µl (2 blots)  
**CONCENTRATION** 100 µg/ml  
**STORAGE/SHELF LIFE** 2 – 8° C / 1 year from date of receipt  
**PHYSICAL STATE** Liquid  
**BUFFER** Borate Buffered Saline (BBS) pH 8.2 with 0.1% BSA and 0.09% Sodium Azide  
**ISOTYPE** IgG  
**CLONE #** BLR037F  
**ORIGIN** USA  
**PRODUCTION PROCEDURES** Recombinant antibody was purified from cell culture supernatant.

Immunogen was a peptide representing a region between residue 1550 and the C-terminus (residue 1581) of human Mediator complex subunit 1 using the numbering given in entry NP\_004765.2 (GeneID 5469).

**APPLICATIONS** Centrifuge tube to remove product from lid. Optimal working dilutions should be determined experimentally by the investigator. Prepare working dilution immediately before use.

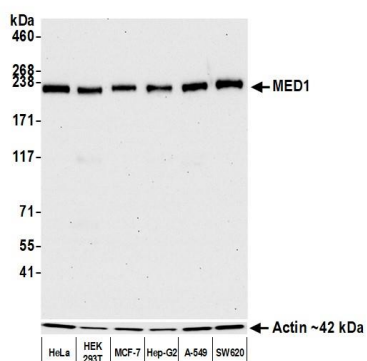
Western Blot 1:1000  
Immunoprecipitation 20 µl/1 mg lysate  
Immunohistochemistry 1:100 to 1:500. Epitope retrieval with citrate buffer pH6.0 is recommended for FFPE tissue sections.  
Immunocytochemistry 1:100 to 1:500. Epitope retrieval with citrate buffer pH6.0 is recommended for FFPE tissue sections.

**IHC HUMAN CONTROLS** Breast Carcinoma, Colon Carcinoma, Lung Carcinoma, Ovarian Carcinoma, HCT 116 Cells, HeLa Cells, Hep-G2 Cells, RPMI-8226 Cells

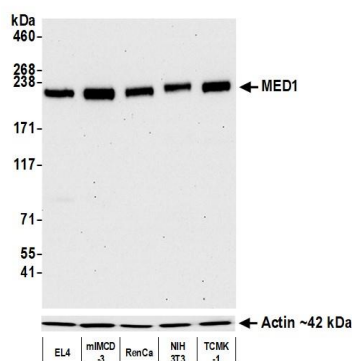
**IHC MOUSE CONTROLS** Renal Cell Carcinoma

**ADDITIONAL INFO** <https://www.bethyl.com/product/A700-037-T>  
Use the link above to view SDS, a current list of citations, and other product specific information.

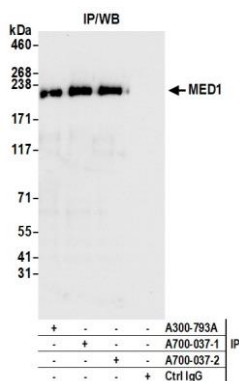
This document certifies that this product has met all of the quality control standards defined by Bethyl Laboratories, Inc.  
Eric McIntush, PhD | Chief Scientific Officer Date: July 21, 2020



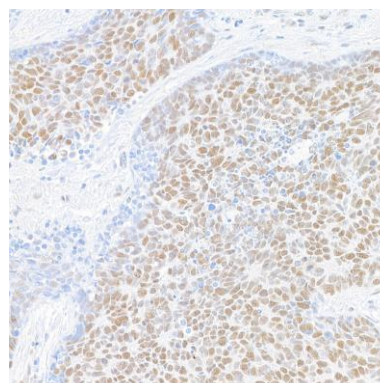
**Detection of human MED1 by western blot.** *Samples:* Whole cell lysate (10 µg) from HeLa, HEK293T, MCF-7, Hep-G2, A-549, and SW620 cells prepared using NETN lysis buffer. *Antibody:* Rabbit anti-MED1 recombinant monoclonal antibody [BLR037E] (A700-037-T Lot 2) used at 1:1000. *Secondary:* HRP-conjugated goat anti-rabbit IgG (A120-101P). Chemiluminescence with an exposure time of 30 seconds. Lower Panel: Rabbit anti-Cytoskeletal Actin recombinant monoclonal (A700-057).



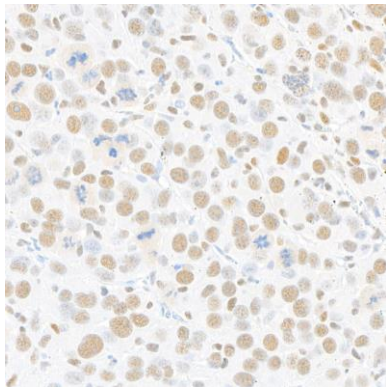
**Detection of mouse MED1 by western blot.** *Samples:* Whole cell lysate (10 µg) from EL4, mIMCD-3, RenCa, NIH 3T3, and TCMK-1 cells prepared using NETN lysis buffer. *Antibody:* Rabbit anti-MED1 recombinant monoclonal antibody [BLR037E] (A700-037-T Lot 2) used at 1:1000. *Secondary:* HRP-conjugated goat anti-rabbit IgG (A120-101P). Chemiluminescence with an exposure time of 30 seconds. Lower Panel: Rabbit anti-Cytoskeletal Actin recombinant monoclonal (A700-057).



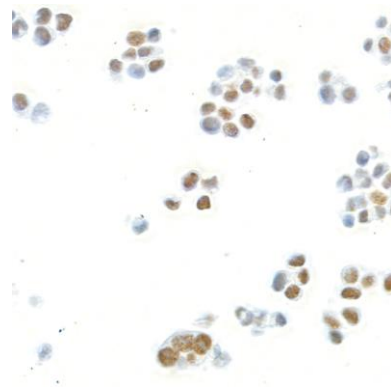
**Detection of human MED1 by western blot of immunoprecipitates.** *Samples:* Whole cell lysate (1.0 mg per IP reaction; 20% of IP loaded) from HeLa cells prepared using NETN lysis buffer. *Antibodies:* Rabbit anti-MED1 recombinant monoclonal antibody [BLR037E] (A700-037-T Lot 2) used for IP at 20 µl/mg lysate. MED1 was also immunoprecipitated by a previous lot of this antibody (A700-037-1) and rabbit anti-MED1 antibody A300-793A. For blotting immunoprecipitated MED1, A700-037 was used at 1:1000. Chemiluminescence with an exposure time of 3 seconds.



**Detection of human MED1 in FFPE lung carcinoma by immunohistochemistry.** *Antibody:* Rabbit anti-MED1 recombinant monoclonal antibody [BLR037E] (A700-037-T Lot 2). *Secondary:* HRP-conjugated goat anti-rabbit IgG (A120-501P). *Substrate:* DAB.



**Detection of mouse MED1 in FFPE renal cell carcinoma by immunohistochemistry.** *Antibody:* Rabbit anti-MED1 recombinant monoclonal antibody [BLR037F] (A700-037-T Lot 2). *Secondary:* HRP-conjugated goat anti-rabbit IgG (A120-501P). *Substrate:* DAB.



**Detection of human MED1 in FFPE HCT 116 cells by immunocytochemistry.** *Antibody:* Rabbit anti-MED1 recombinant monoclonal antibody [BLR037F] (A700-037-T Lot 2). *Secondary:* HRP-conjugated goat anti-rabbit IgG (A120-501P). *Substrate:* DAB.